

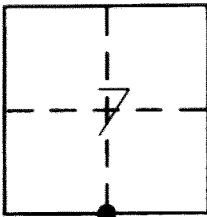
**CORNER RECORD**

Document Number 4521

City of MERCED

County of MERCED, California

Brief Legal Description SOUTH 1/4 CORNER SECTION 7 T. 7 S., R. 14 E. M.D.B.M.



T7S, R14E

**CORNER TYPE**

Government Corner  Control   
Meander  Property   
Rancho  Other   
Date of Survey 6-19-2013

**COORDINATES (Optional)**

N. \_\_\_\_\_  
E. \_\_\_\_\_  
Zone            NAD27  NAD83   
NAD83 Epoch \_\_\_\_\_  
Elev. \_\_\_\_\_  
Vert. Datum: NGVD29  NAVD88   
Meas. Units: Metric  Imperial

Corner - Left as found  Found and tagged  Established  Reestablished  Rebuilt

Identification and type of corner found: Evidence used to identify or procedure used to establish or reestablish the corner:  
FOUND 3/4" IRON PIPE WITH NO TAG IN MONUMENT WELL AS SHOWN ON  
MAP OF HEADLINER HOMES NO.4, 22 O.P. 39, M.C.R., SOUTH 1/4 CORNER SECTION 7 T. 7 S., R. 14 E. M.D.B.M.  
MONUMENT MAY BE DESTROYED WITH CONSTRUCTION PROJECT.

A description of the physical condition of the monument as found and as set or reset: \_\_\_\_\_  
\_\_\_\_\_  
\_\_\_\_\_

**SURVEYOR'S STATEMENT**

This Corner Record was prepared by me or under my direction in conformance with  
the Land Surveyor's Act on JULY 12, 2013  
Signed [Signature] P.L.S or R.G.E. No. 7621

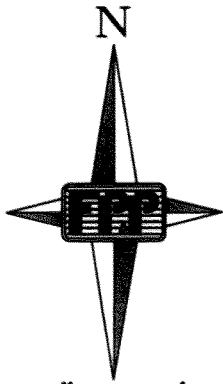


**COUNTY SURVEYOR'S STATEMENT**

This Corner Record was received July 11, 2013  
and examined and filed July 24, 2013  
Signed [Signature] P.L.S or R.G.E. No. 4895  
Title County Surveyor

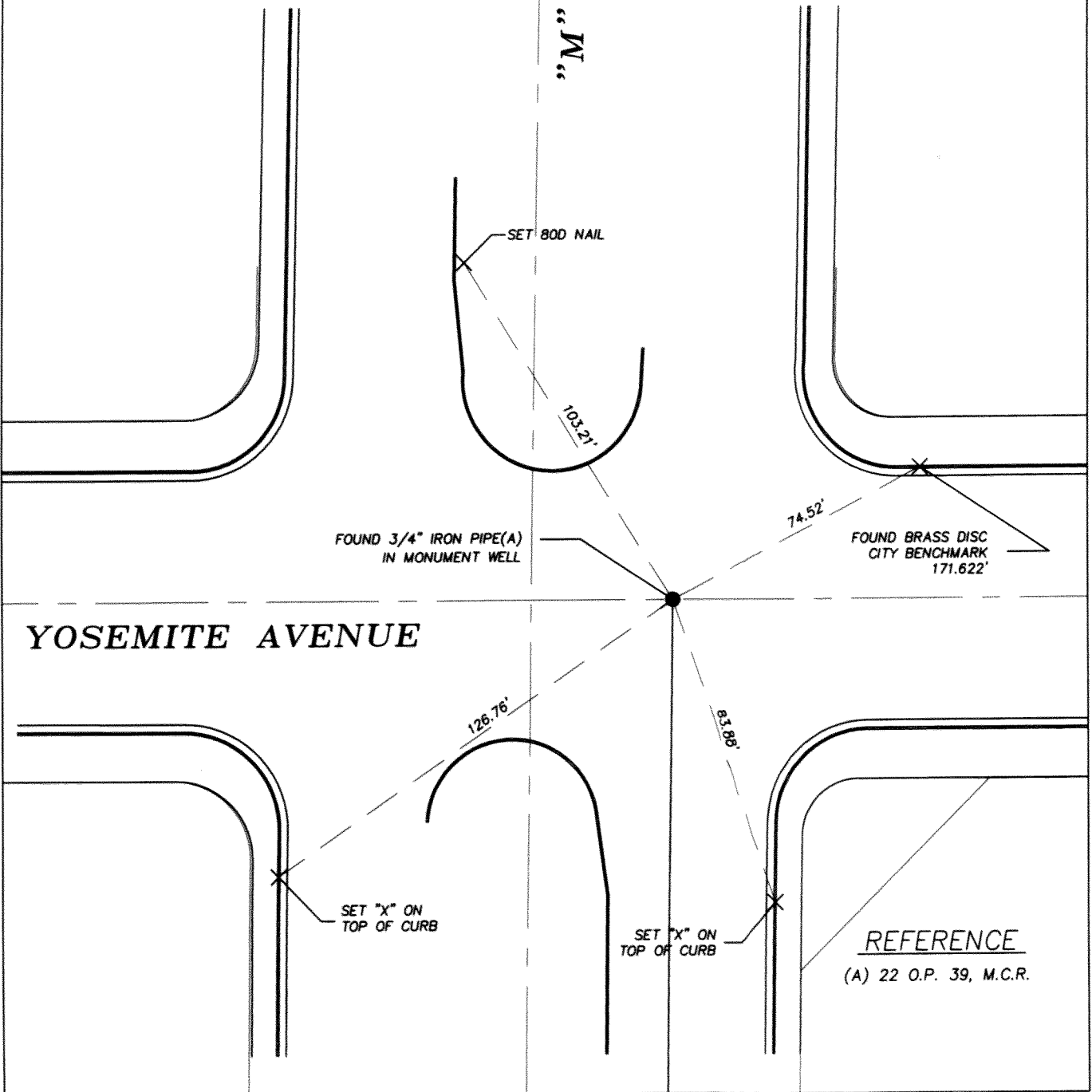


County Surveyor's Comment Monument is called 0.67'  
east of true corner by 22 O.P. 39 and 12 R.S. 12.



SCALE 1" = 40'

"M" STREET



REFERENCE  
(A) 22 O.P. 39, M.C.R.