

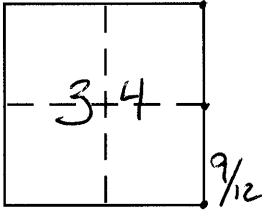
**CORNER RECORD**

Document Number 2647, 4120, 4121

City of \_\_\_\_\_

County of MERCED, California

Brief Legal Description EAST LINE OF SECTION 34 1/2, MILLER AND LUX SUB.



**CORNER TYPE**

Government Corner  Control   
 Meander  Property   
 Rancho  Other   
 Date of Survey 8/8/07

**COORDINATES (Optional)**

N. \_\_\_\_\_  
 E. \_\_\_\_\_  
 Zone \_\_\_\_\_ NAD27  NAD83   
 NAD83 Epoch \_\_\_\_\_  
 Elev. \_\_\_\_\_  
 Vert. Datum: NGVD29  NAVD88   
 Meas. Units: Metric  Imperial

Corner – Left as found  Found and tagged  Established  Reestablished  Rebuilt

Identification and type of corner found: Evidence used to identify or procedure used to establish or reestablish the corner:

SEE SKETCH

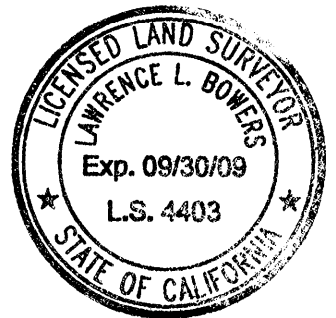
A description of the physical condition of the monument as found and as set or reset:

SEE SKETCH

**SURVEYOR'S STATEMENT**

This Corner Record was prepared by me or under my direction in conformance with the Land Surveyor's Act on 1-11-08

Signed [Signature] P.L.S or R.C.E. No. \_\_\_\_\_



**COUNTY SURVEYOR'S STATEMENT**

This Corner Record was received Jan. 11, 2008

and examined and filed Jan. 11, 2008

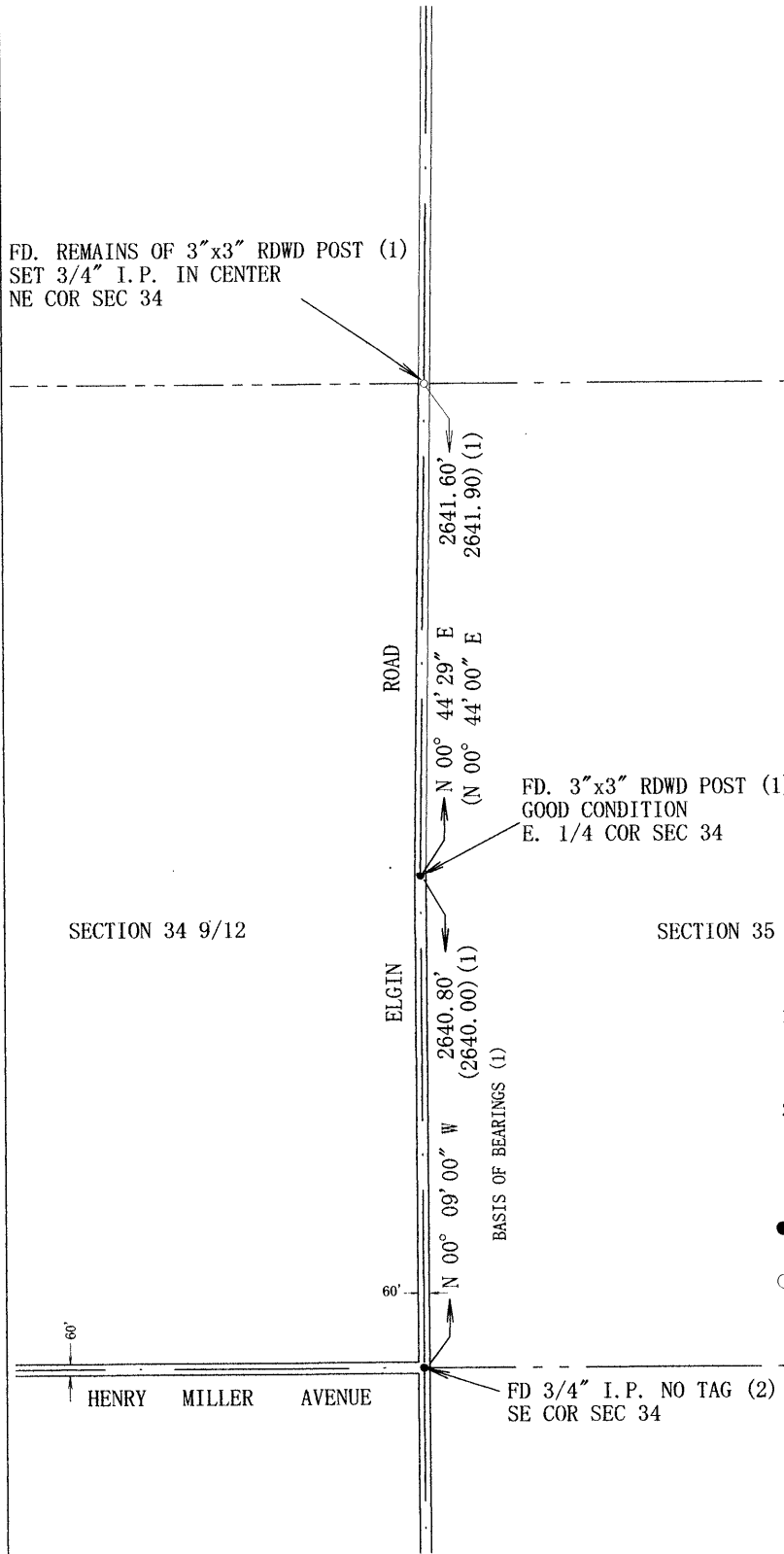
Signed [Signature] P.L.S or ~~R.C.E.~~ No. 4895

Title Dep. County Surveyor



County Surveyor's Comment \_\_\_\_\_

FD. REMAINS OF 3"x3" RDWD POST (1)  
 SET 3/4" I.P. IN CENTER  
 NE COR SEC 34



SECTION 34 9/12

SECTION 35 9/12

REFERENCES

1. MILLER & LUX SUBDIVISION  
 SECTION 34 T. 9 S. R. 12 E.  
 ON FILE AT THE COUNTY SURVEYORS  
 OFFICE.
2. PARCEL MAP FOR JOE B. FIALHO  
 45 P.M. 44 M.C.R.

LEGEND

- FOUND MONUMENT AS NOTED
- SET 3/4" I.P. LS 4403