

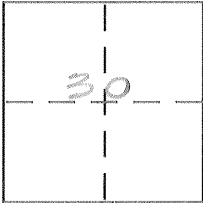
CORNER RECORD

Document Number 4119

City of Merced

County of Merced, California

Brief Legal Description Lots 31 & 32 - Block 281 - Supplemental Map Town of Merced, 20.P.12



CORNER TYPE

Government Corner Control
Meander Property
Rancho Other
Date of Survey 5-15-05

COORDINATES (Optional)

N. _____
E. _____
Zone _____ NAD27 NAD83
NAD83 Epoch _____
Elev. _____
Vert. Datum: NGVD29 NAVD88
Meas. Units: Metric Imperial

Corner - Left as found Found and tagged Established Reestablished Rebuilt

Identification and type of corner found: Evidence used to identify or procedure used to establish or reestablish the corner:

See sketch

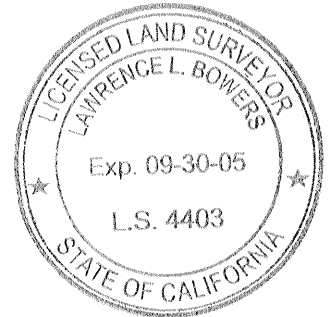
A description of the physical condition of the monument as found and as set or reset:

See sketch

SURVEYOR'S STATEMENT

This Corner Record was prepared by me or under my direction in conformance with the Land Surveyor's Act on 6-21-05

Signed [Signature] P.L.S or R.C.E. No. _____



COUNTY SURVEYOR'S STATEMENT

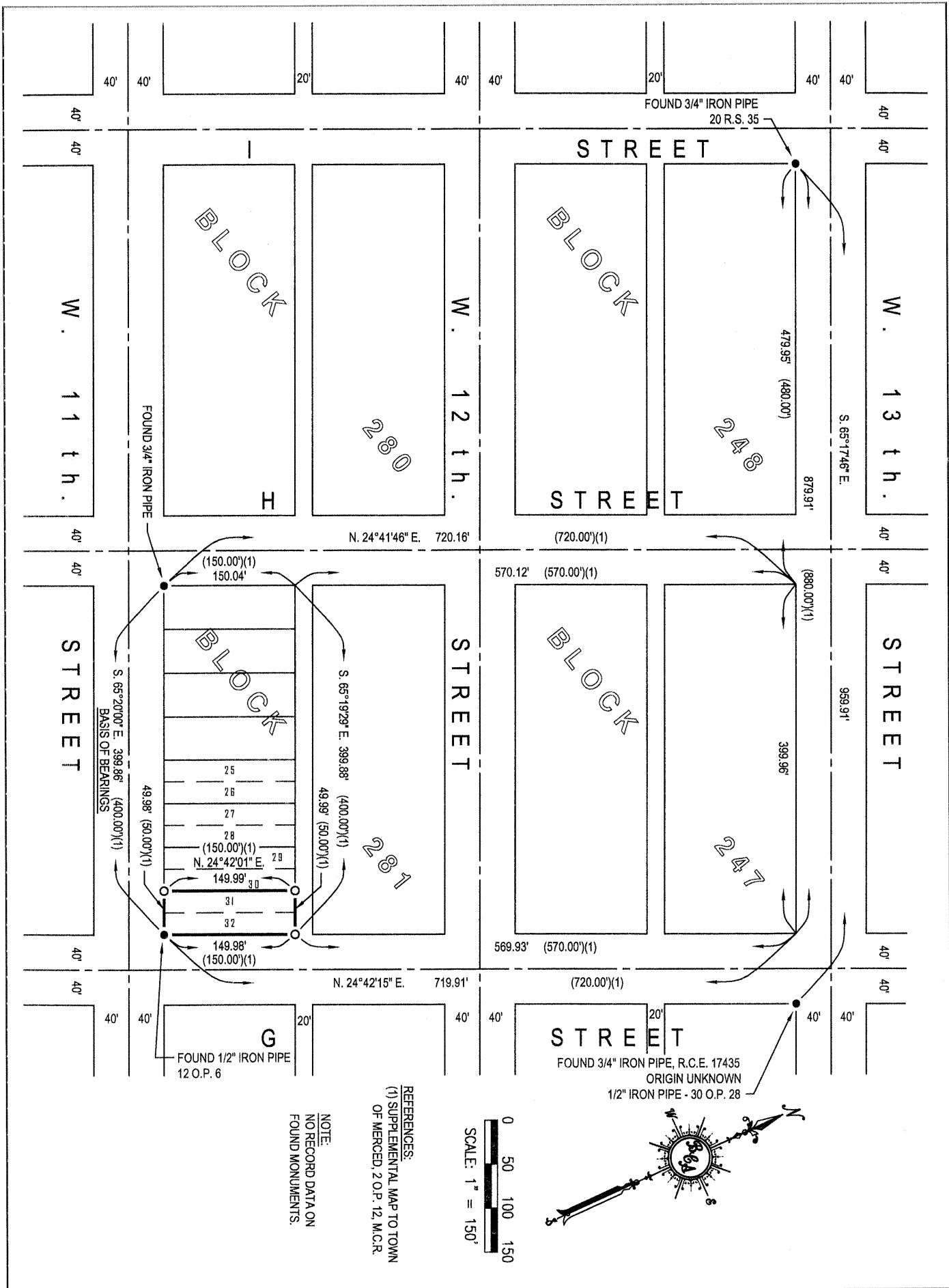
This Corner Record was received 6-22-05

and examined and filed 6-23-05

Signed [Signature] P.L.S or R.C.E. No. 4895
Title Deputy County Surveyor



County Surveyor's Comment _____



NOTE:
NO RECORD DATA ON
FOUND MONUMENTS.

REFERENCES:
(1) SUPPLEMENTAL MAP TO TOWN
OF MERCED, 2 O.P. 12, M.C.R.

