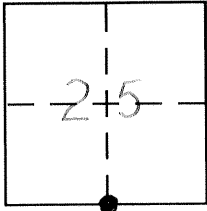


CORNER RECORD

Document Number 4115

City of _____ County of MERCED, California

Brief Legal Description SOUTH 1/4 CORNER SECTION 25, T.9S., R.13E.



CORNER TYPE

Government Corner Control
 Meander Property
 Rancho Other
 Date of Survey NOV 1999

COORDINATES (Optional)

N. _____
 E. _____
 Zone _____ NAD27 NAD83
 NAD83 Epoch _____
 Elev. _____
 Vert. Datum: NGVD29 NAVD88
 Meas. Units: Metric Imperial

Corner - Left as found Found and tagged Established Reestablished Rebuilt

Identification and type of corner found: Evidence used to identify or procedure used to establish or reestablish the corner:

FD 5/8" IRON ROD WITH BRASS TAG "LS 3733" IN SURVEY ENCASEMENT.

A description of the physical condition of the monument as found and as set or reset:

SET NEW TIES PRIOR TO WASHINGTON ROAD OVERLAY. (SEE BACK OF THIS SHEET). RAISED SURVEY ENCASEMENT TO GRADE.

SURVEYOR'S STATEMENT

This Corner Record was prepared by me or under my direction in conformance with the Land Surveyor's Act on DEC 1999

Signed Roy L. Turney P.L.S. or R.C.E. No. 5523

COUNTY SURVEYOR'S STATEMENT

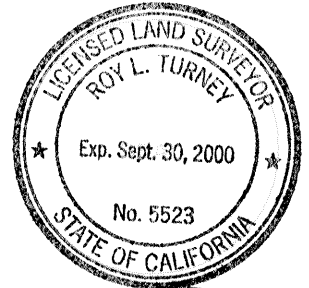
This Corner Record was received _____

and examined and filed JAN 2000

Signed Roy L. Turney P.L.S. or R.C.E. No. 5523

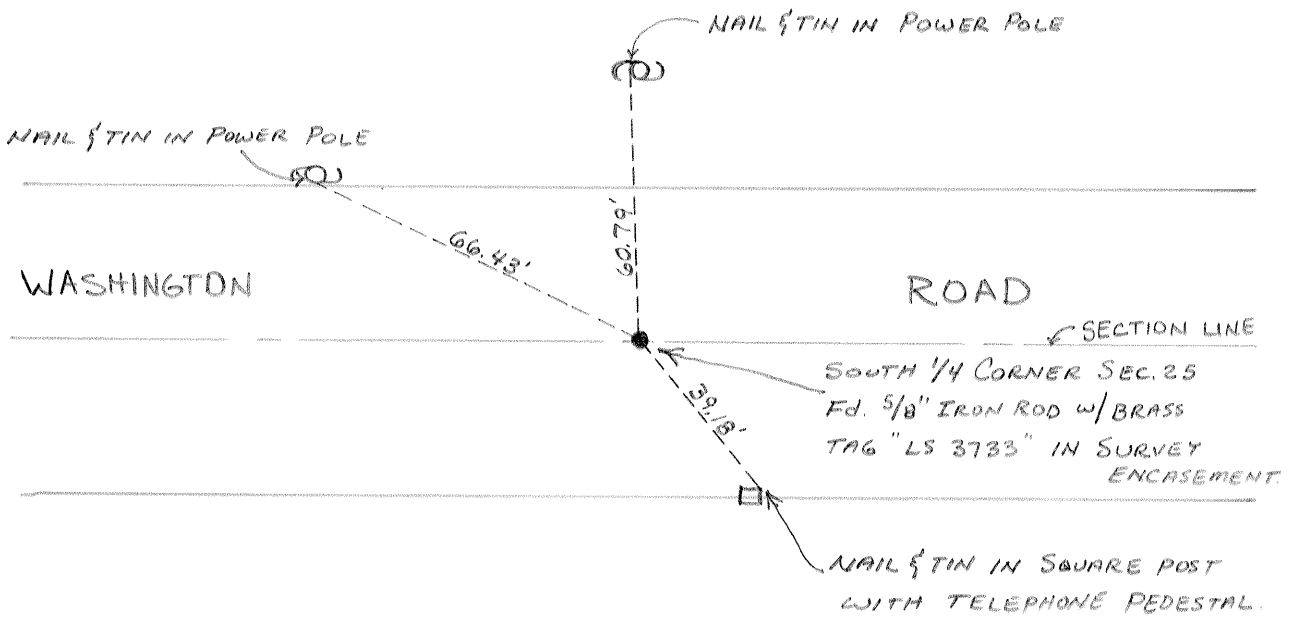
Title Dep. Co. Surveyor

County Surveyor's Comment _____





SECTION
25



SECTION
36

T. 9 S., R. 13 E.