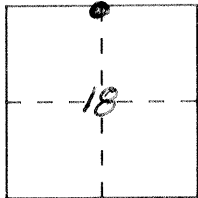


CORNER RECORD

Document Number 4110

City of _____ County of MERCED, California

Brief Legal Description N. 1/4 CORNER SECTION 18, T.6S. R.10E.



CORNER TYPE

COORDINATES (Optional)

Government Corner Control
Meander Property
Rancho Other
Date of Survey _____

N. _____
E. _____
Zone _____ Datum _____
Elev. _____

Corner — Left as found Found and tagged Established Reestablished Rebuilt

Identification and type of corner found: Evidence used to identify or procedure used to establish or reestablish the corner:

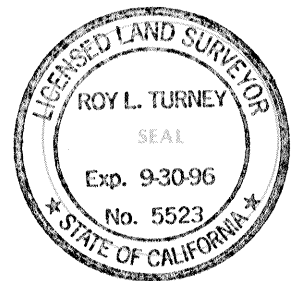
MONUMENT ESTABLISHED ON PARCEL MAP 38
PAGE 6, FD. 3/4" IRON PIPE WITH TAG 3870, PLACED
MONUMENT WELL OVER PIPE.
Points tied out prior to paving effort by Merced County

A description of the physical condition of the monument as found and as set or reset: These ties are
for the purpose of perpetuating the found monumentation.
No claim is made as to the relationship of the points
or lines shown hereon to true boundary locations

SURVEYOR'S STATEMENT

This Corner Record was prepared by me or under my direction in conformance with the Land Surveyors' Act on SEPTEMBER 14, 1995.

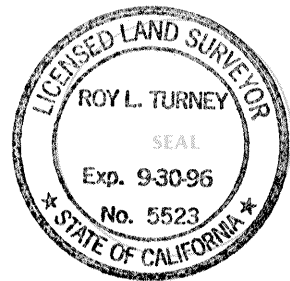
Signed Roy L. Turney T.S. or R.C.E. Number 5523



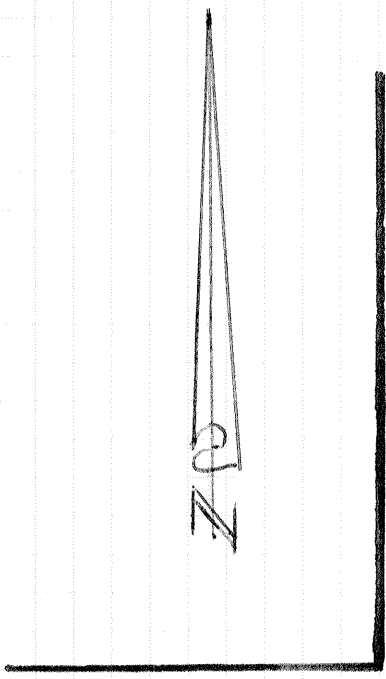
COUNTY SURVEYOR'S STATEMENT

This Corner Record was received SEPT. 1995 and examined and filed OCTOBER 5, 1995.

Signed Roy L. Turney Title DEP CO. SUR.



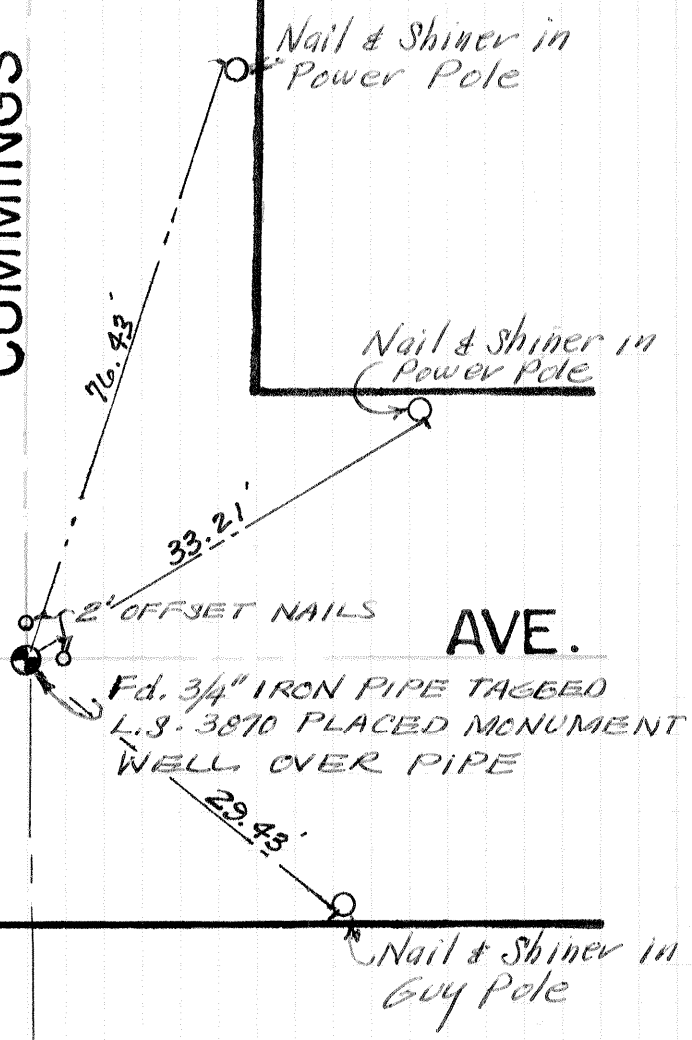
County Surveyor's Comment _____



CUMMINGS RD.

AUGUST

AVE.



Nail & Shiner in Power Pole

Nail & Shiner in Power Pole

2" OFFSET NAILS

Fd. 3/4" IRON PIPE TAGGED L.S. 3870 PLACED MONUMENT WELL OVER PIPE

Nail & Shiner in Guy Pole