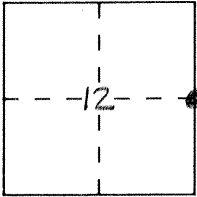


CORNER RECORD

Document Number ~~12027~~ 4107

City of \_\_\_\_\_ County of MERCED, California

Brief Legal Description E 1/4 CORNER SECTION 12 T6S R12E



CORNER TYPE

Government Corner  Control   
Meander  Property   
Rancho  Other   
Date of Survey 10-4-91

COORDINATES  
(Optional)

N. \_\_\_\_\_  
E. \_\_\_\_\_  
Zone \_\_\_\_\_ Datum \_\_\_\_\_  
Elev. \_\_\_\_\_

Corner — Left as found  Found and tagged  Established  Reestablished  Rebuilt

Identification and type of corner found: Evidence used to identify or procedure used to establish or reestablish the corner:

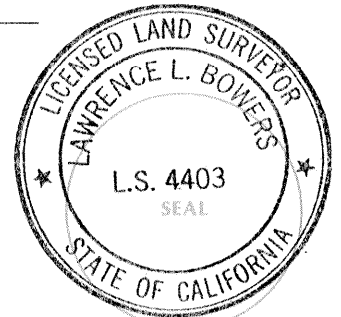
Found railroad spike, was replaced with 3/4" Iron Pipe, L.S. 4403 in monument well after paving.

A description of the physical condition of the monument as found and as set or reset: \_\_\_\_\_

SURVEYOR'S STATEMENT

This Corner Record was prepared by me or under my direction in conformance with the Land Surveyors' Act on 3-16 1992.

Signed Lawrence L. Bowers L.S. or R.C.E. Number \_\_\_\_\_



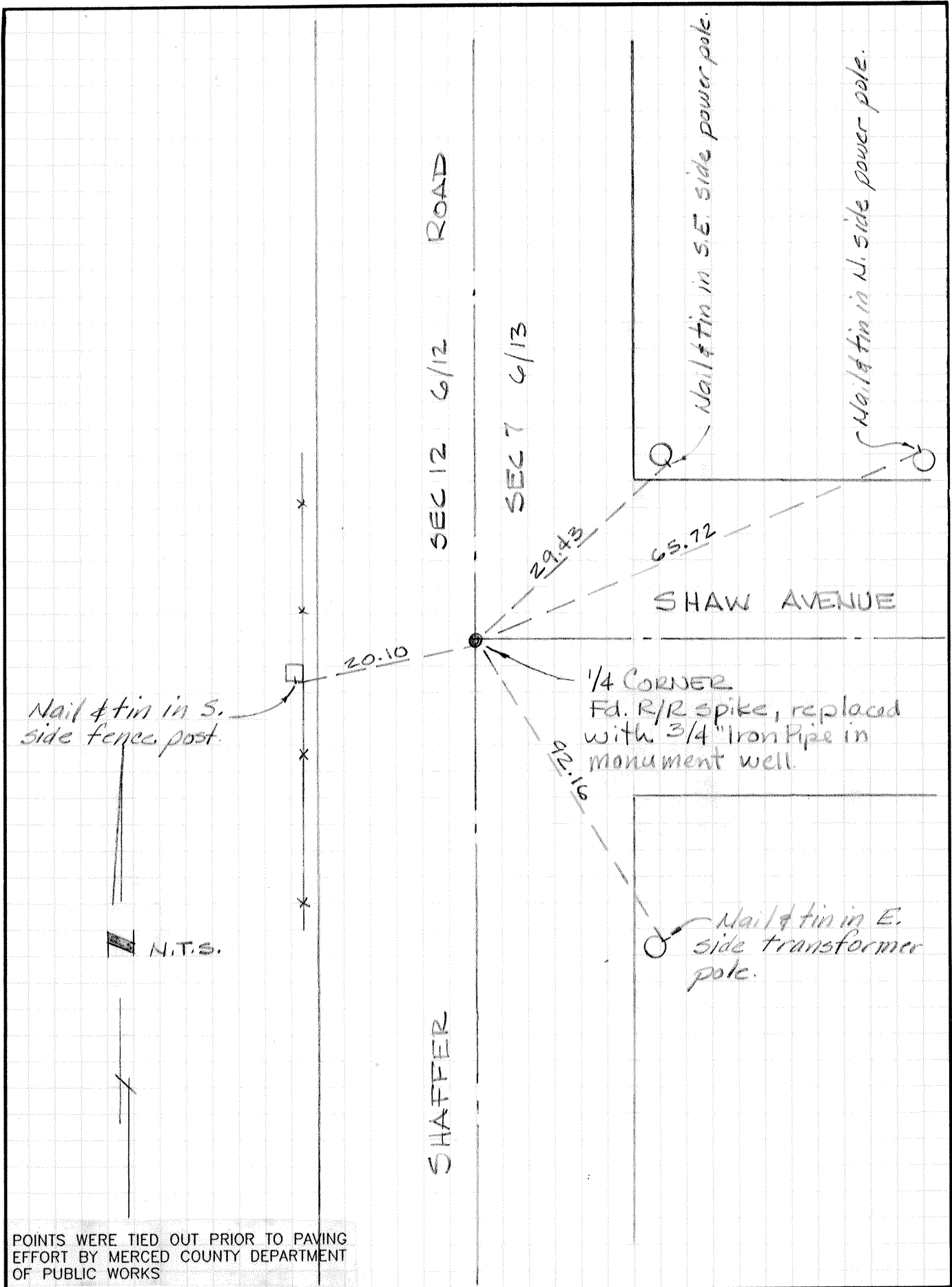
COUNTY SURVEYOR'S STATEMENT

This Corner Record was received 3-17-92 1992 and examined and filed 3-19 1992.

Signed Roy L. Turney Title Dep. Co. Surveyor



County Surveyor's Comment \_\_\_\_\_



POINTS WERE TIED OUT PRIOR TO PAVING EFFORT BY MERCED COUNTY DEPARTMENT OF PUBLIC WORKS