

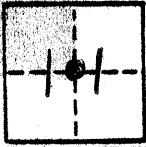
CR 4106

CORNER RECORD

COUNTY OF MERCED T. 5 S. R. 12 E. M.D.B. & MERIDIAN CALIFORNIA

CORNER TYPE: GOV'T. CORNER MEANDER RANCHO CONTROL OTHER

CORNER IDENTIFICATION - DATE OF VISIT JULY 9, 1991



CENTER 1/4 CORNER SECTION 11 5/12

CORNER - LEFT AS FOUND FOUND AND TAGGED REESTABLISHED OBLITERATED CORNER RESULT

PHYSICAL DESCRIPTION OF CORNER FOUND; EVIDENCE AND METHOD USED TO IDENTIFY OR REESTABLISH

FOUND 1/2" IRON PIPE - L.S. 4379 - DOWN 11"

PHYSICAL DESCRIPTION OF MONUMENTS RESULT OR PERPETUATED

CALIFORNIA COORDINATE SYSTEM ORDER: FIRST SECOND THIRD
STATIONS USED: NGS (USC & GS) STATE COUNTY OTHER STATION _____ STATION _____
ZONE _____ ELEVATION _____ NORTHINGS (N) _____ EASTINGS (E) _____

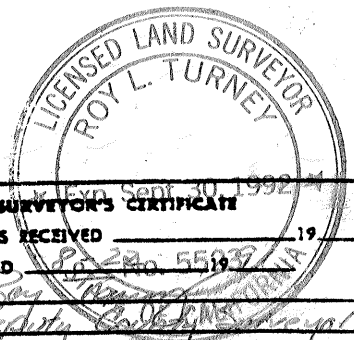
SKETCH: (Include reference tie or witness points, remarks and topo of area)

16.40' E. OF ALMOND ROW N. & S.
14.60' W. OF PEACH ROW N. & S.
48.08' S. OF 3/4" I.P. - S. --- 71 - DOWN 14"
PORTION NUMBERS & LETTERS ON PLASTIC PLUG CUT OFF,
26.60' S. OF PEACH ROW E. - S/S 39.50' DIRT AVE. E.
31.50' S. OF ALMOND ROW W. - S/S 34' DIRT AVE. W.

See P.M. BK, 66 Pg-3

J.N. 91-041

F.B. 587/A



SURVEYOR'S CERTIFICATE

THIS CORNER RECORD WAS PREPARED BY ME OR UNDER MY DIRECTION IN CONFORMANCE WITH THE LAND SURVEYORS ACT ON JULY 9, 1991

SIGNED: William O. Gentry

L.S. or R.C.E. No. 2737
EXPIRES: 6-30-1992

SEAL

COUNTY SURVEYOR'S CERTIFICATE

THE CORNER RECORD WAS RECEIVED _____ 19____ AND EXAMINED AND FILED 8-28-92 No. 5519

BY: Roy L. Turney
TITLE: Deputy County Surveyor

DOCUMENT No. # 4106

STATEMENT ON BACK OF SHEET

YES NO