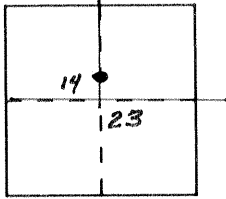


CORNER RECORD

Document Number 4097

City of _____ County of MERCED, California

Brief Legal Description REFERENCE MON. 33' N. OF S 1/4 COR. SECT. 14 T10S R11E M036M



CORNER TYPE

Government Corner Control
 Meander Property
 Rancho Other
 Date of Survey 6-7-90

COORDINATES (Optional)

N. _____
 E. _____
 Zone _____ Datum _____
 Elev. _____

Corner — Left as found Found and tagged Established Reestablished Rebuilt

Identification and type of corner found: Evidence used to identify or procedure used to establish or reestablish the corner: R.R. SPIKE 33'± N. OF S. 1/4 COR. SECT. 14

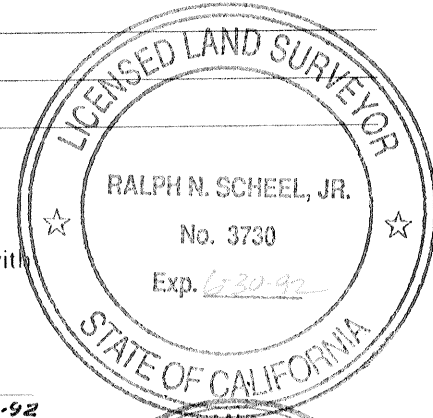
A description of the physical condition of the monument as found and as set or reset: _____

MONUMENT APPEARS TO BE IN GOOD CONDITION - FLUSH WITH PAVEMENT

SURVEYOR'S STATEMENT

This Corner Record was prepared by me or under my direction in conformance with the Land Surveyors' Act on JUNE 7 1990.

Signed Ralph N. Scheel, Jr. L.S. or R.C.E. Number LS3730
LIC EXP 6-30-92



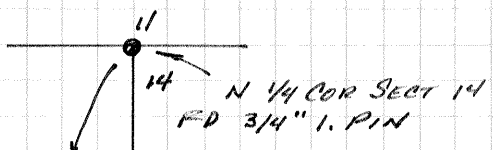
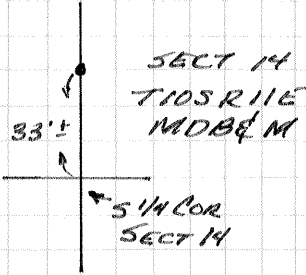
COUNTY SURVEYOR'S STATEMENT

This Corner Record was received August 1990 and examined and filed August 22 1990.

Signed Roy L. Turney Title Dep. Co. Surveyor



County Surveyor's Comment COR. NO. 4097



5248.41

BOX CAR ROAD

FOUND 3/4" PIPE w/ PLUG NUMBER NOT LEGIBLE

12.5821

SET PRK'SHINER IN TELE PEDESTAL POST PEDESTAL # 270

46.35'

SET PRK'SHINER IN P. POLE

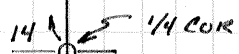
SET PRK'SHINER IN P. POLE

257.27'

64.93'

FOUND R.R. SPIKE AT SURFACE

33'



STATE ROUTE

14

23

152

SEE CO. RIW. SURV. FB 11 Pg 20 1-30-50