

CORNER RECORD

COUNTY OF Merced T. 10 S. R. 12 E. M.D.B. MERIDIAN CALIFORNIA

CORNER TYPE: GOVT. CORNER MEANDER RANCHO CONTROL OTHER
 CORNER IDENTIFICATION — DATE OF VISIT April 30 1987



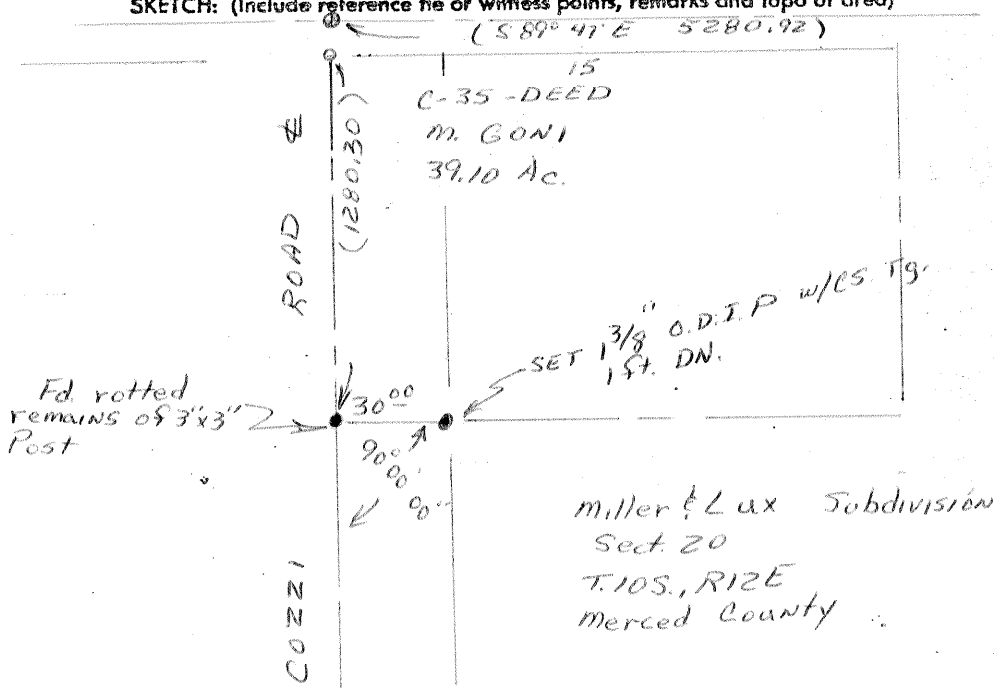
CORNER — LEFT AS FOUND FOUND AND TAGGED REESTABLISHED OBLITERATED CORNER REBUILT

PHYSICAL DESCRIPTION OF CORNER FOUND, EVIDENCE AND METHOD USED TO IDENTIFY OR REESTABLISH
 Found rotted remains of 3"x3" post, 2" down from road surface.

PHYSICAL DESCRIPTION OF MONUMENTS REBUILT OR PERPETUATED
 Set 1 3/8" outside diameter iron pipe 30.00 east of post, as a witness monument

CALIFORNIA COORDINATE SYSTEM ORDER: FIRST SECOND THIRD
 STATIONS USED: NGS (USC & GS) STATE COUNTY OTHER STATION _____ STATION _____
 ZONE _____ ELEVATION _____ NORTHINGS (Y) _____ EASTINGS (X) _____

SKETCH: (Include reference tie or witness points, remarks and topo of area)



Material from field
 book 717 pg. 79
 Merced County Road
 Department
 By Gary Grindler
 Gary Grindler
 Party Chief
 May 8, 1987

SURVEYOR'S CERTIFICATE

THIS CORNER RECORD WAS PREPARED BY ME OR UNDER MY DIRECTION IN CONFORMANCE WITH THE LAND SURVEYORS ACT ON _____ 19____

SIGNED: _____

L.S. or R.C.E. No.: _____

SEAL

COUNTY SURVEYOR'S CERTIFICATE

THE CORNER RECORD WAS RECEIVED 5-27 1987
 AND EXAMINED AND FILED 5-27 1987

BY: Roy Turner
 TITLE: Dep. Co. Sur

DOCUMENT No. 4088

STATEMENT ON BACK OF SHEET

YES NO