

CORNER RECORD

COUNTY OF Merced T. 10 S. R. 12 E M.D. B. MERIDIAN CALIFORNIA

CORNER TYPE: GOVT. CORNER MEANDER RANCHO CONTROL OTHER

CORNER IDENTIFICATION -- DATE OF VISIT April 30 1987



CORNER -- LEFT AS FOUND FOUND AND TAGGED REESTABLISHED OBLITERATED CORNER REBUILT

PHYSICAL DESCRIPTION OF CORNER FOUND; EVIDENCE AND METHOD USED TO IDENTIFY OR REESTABLISH

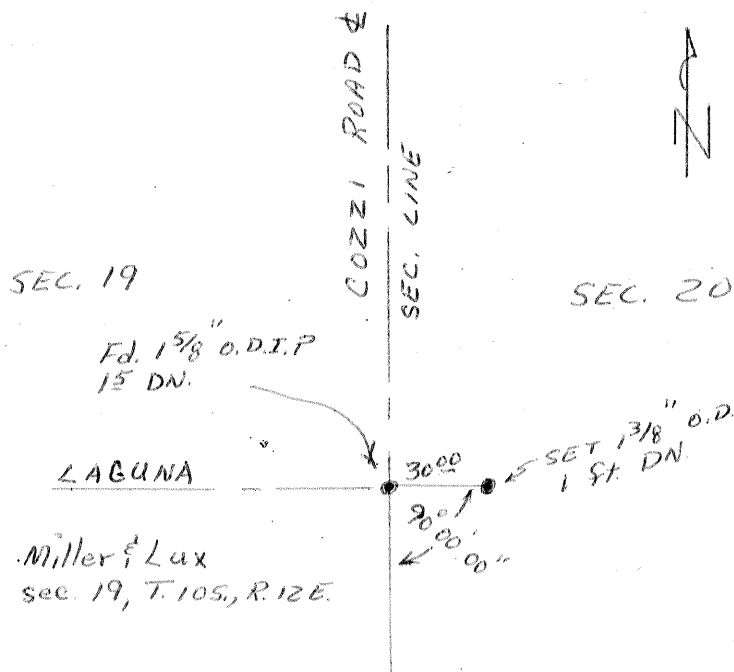
Found 1 5/8" outside diameter iron pipe; 1 1/2 down from road surface

PHYSICAL DESCRIPTION OF MONUMENTS REBUILT OR PERPETUATED

Set 1 3/8" outside diameter iron pipe, with 'county surveyor' tag, 30" feet east and 1 foot down.

CALIFORNIA COORDINATE SYSTEM ORDER: FIRST SECOND THIRD
 STATIONS USED: NGS (USC & GS) STATE COUNTY OTHER STATION _____ STATION _____
 ZONE _____ ELEVATION _____ NORTHINGS (Y) _____ EASTINGS (X) _____

SKETCH: (Include reference tie or witness points, remarks and topo of area)



Material from field book 717 pg. 79, Merced County Road Department

*By Gary Grunder
 Gary Grunder*

*Party Chief
 May 8, 1987*

SURVEYOR'S CERTIFICATE

THIS CORNER RECORD WAS PREPARED BY ME OR UNDER MY DIRECTION IN CONFORMANCE WITH THE LAND SURVEYORS ACT ON _____ 19____

SIGNED: _____

L.S. or R.C.E. No.: _____

SEAL

COUNTY SURVEYOR'S CERTIFICATE

THE CORNER RECORD WAS RECEIVED 5-27 1987 AND EXAMINED AND FILED 5-27 1987

BY: Ray Tamm

TITLE: Dep. Co. Sur

DOCUMENT No. 4068

STATEMENT ON BACK OF SHEET

YES NO