

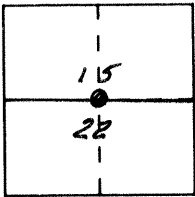
6

# CORNER RECORD

Document Number 4062

City of \_\_\_\_\_ County of MERCED, California

Brief Legal Description N. 1/4 COR. SECT. 22 T. 10S. R. 12E. MDB. 8M.



### CORNER TYPE

Government Corner  Control   
 Meander  Property   
 Rancho  Other   
 Date of Survey JUNE 6, 1990

### COORDINATES (Optional)

N. \_\_\_\_\_  
 E. \_\_\_\_\_  
 Zone \_\_\_\_\_ Datum \_\_\_\_\_  
 Elev. \_\_\_\_\_

Corner — Left as found  Found and tagged  Established  Reestablished  Rebuilt

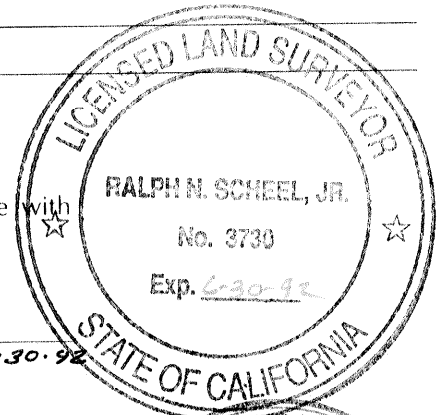
Identification and type of corner found: Evidence used to identify or procedure used to establish or reestablish the corner: Fd. PK'S & SHINER R.P.'S / Fd HET DOWN 0.4 / Fd POST DOWN 0.8

A description of the physical condition of the monument as found and as set or reset: LEAD & TACK HAVE BEEN BROKEN OFF — SET SPIKE FLUSH WITH TOP OF REMAINING PART OF POST BASED ON 2' R.P.S. SET SPIKE AT SURFACE.

### SURVEYOR'S STATEMENT

This Corner Record was prepared by me or under my direction in conformance with the Land Surveyors' Act on JUNE 6 1990.

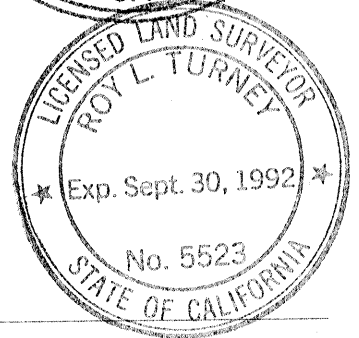
Signed Ralph N. Scheel, Jr. L.S. or R.C.E. Number LS3730  
LIC. EXP. 6-30-92



### COUNTY SURVEYOR'S STATEMENT

This Corner Record was received August 1990 and examined and filed August 22 1990.

Signed Roy L. Turney Title Dep. Co. Surveyor



County Surveyor's Comment COR. NO. 4062  
Corner agrees with Corner Records

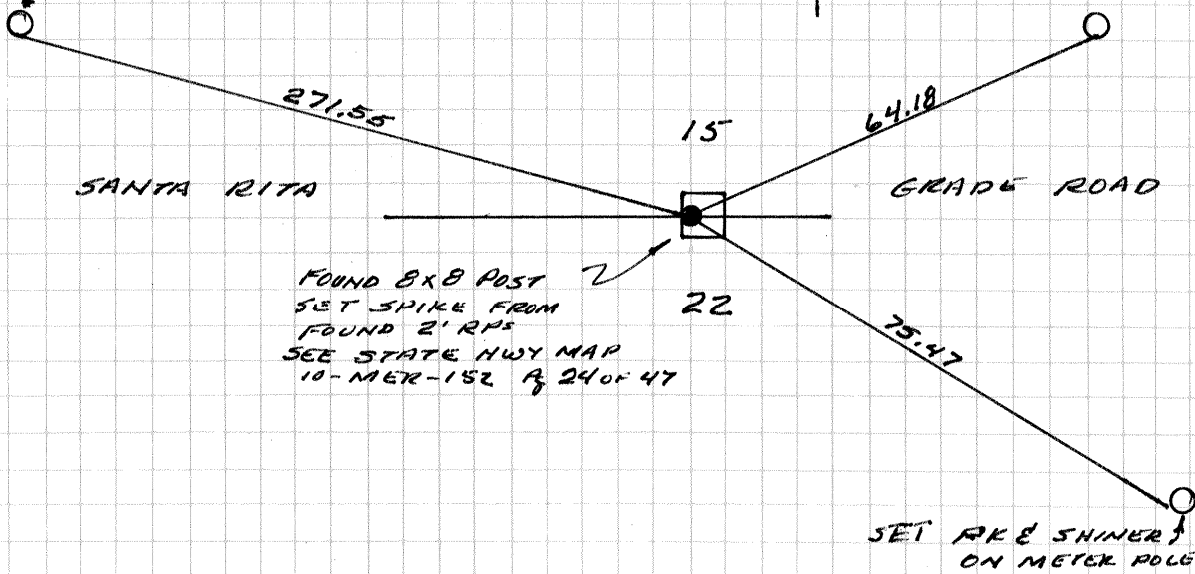
15  
22  
TIOS RIZE  
MDBEM

RESIDENCE  
8520 SANTA RITA GR.

DIRT DRIVE

SET P&E SHINER IN  
J POLE  $\frac{14}{9}$

SET P&E SHINER  
ON TRANS. POLE



FOUND 8x8 POST  
SET SPIKE FROM  
FOUND 2' RPS  
SEE STATE HWY MAP  
10-MER-152 P. 24 OF 47

FOUND 2' RPS S.E. W.