

NO. ~~2316~~ 4055

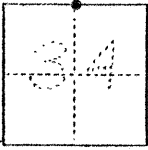
(For County Use Only)

### CORNER RECORD

COUNTY OF MERCED T. 9S R. 14E. M.D.B. & M. MERIDIAN CALIFORNIA

CORNER TYPE: GOV'T. CORNER  MEANDER  RANCHO  CONTROL  OTHER

CORNER IDENTIFICATION -- DATE OF VISIT JUNE 9 1977



1/4 CORNER

CORNER -- LEFT AS FOUND  FOUND AND TAGGED  REESTABLISHED OBLITERATED CORNER  REBUILT

PHYSICAL DESCRIPTION OF CORNER FOUND; EVIDENCE AND METHOD USED TO IDENTIFY OR REESTABLISH

FD. 3/4" I.P. AS DESCRIBED IN FIELD BK 69 PG. 35

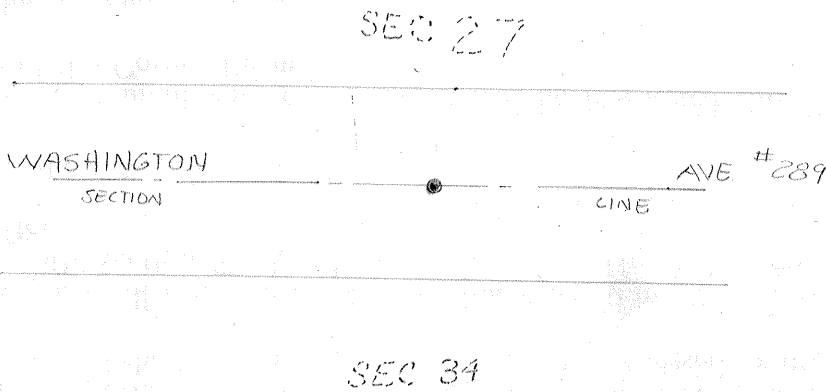
PHYSICAL DESCRIPTION OF MONUMENTS REBUILT OR PERPETUATED

BROUGHT UP WITH 3/4" I.P. WITH TAG. COUNTY SURVEYOR IN SURVEY ENCASEMENT FLUSH WITH PAVEMENT

CALIFORNIA COORDINATE SYSTEM ORDER: FIRST  SECOND  THIRD   
STATIONS USED: NGS (USC & GS)  STATE  COUNTY  OTHER  STATION \_\_\_\_\_ STATION \_\_\_\_\_  
ZONE \_\_\_\_\_ ELEVATION \_\_\_\_\_ NORTHINGS (Y) \_\_\_\_\_ EASTINGS (X) \_\_\_\_\_

(Fold)

SKETCH: (Include reference tie or witness points, remarks and topo of area)



#### SURVEYOR'S CERTIFICATE

THIS CORNER RECORD WAS PREPARED BY ME OR UNDER MY DIRECTION IN CONFORMANCE WITH THE LAND SURVEYORS ACT  
Gr. \_\_\_\_\_ 19\_\_\_\_

SIGNED: \_\_\_\_\_

L.S. or R.C.E. No.: \_\_\_\_\_

SEAL

#### COUNTY SURVEYOR'S CERTIFICATE

THE CORNER RECORD WAS RECEIVED \_\_\_\_\_ 19\_\_\_\_

AND EXAMINED AND FILED \_\_\_\_\_ 19\_\_\_\_

BY: \_\_\_\_\_

TITLE: \_\_\_\_\_

DOCUMENT No. 2316A 4055

STATEMENT ON BACK OF SHEET

YES  NO