

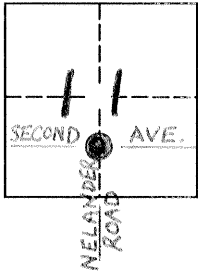
CORNER RECORD

DPD-3011A (Rev. 3/98) CT# 7541-4554-2

Document Number 4049

City of _____ County of MERCED, California

Brief Legal Description COUNTY ROAD CENTERLINE MONUMENT



CORNER TYPE

- Government Corner Control
- Meander Property
- Rancho Other

Date of Survey 2-24-00

COORDINATES(Optional)

N. _____
 E. _____
 Zone _____ NAD27 NAD83
 NAD83 Epoch _____
 Elevation _____
 Vert. Datum: NGVD29 NAV88
 Meas. Units: Metric Imperial

Corner - Left as found Established Reestablished Rebuilt

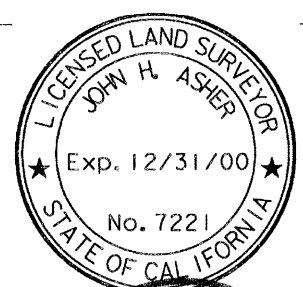
Identification and type of corner found: Evidence used to identify or procedure used to establish or reestablish the corner:
FOUND 2 INCH IRON PIPE TAGGED "COUNTY SURVEYOR", PER RECORD OF SURVEY FILED IN VOL. 20 OF RECORDS OF SURVEY, PAGE 24, M. C. R.

A description of the physical condition of the monument as found and as set or reset:
FOUND IN GOOD CONDITION, DOWN 10 INCHES. FOUND 3 SWING TIES.

SURVEYOR'S STATEMENT

This Corner Record was prepared by me or under my direction in conformance with the Land Surveyor's Act on FEB. 24, 2000.

Signed John H. Asher P.L.S. Number 7221
For the State of California
Department of Transportation



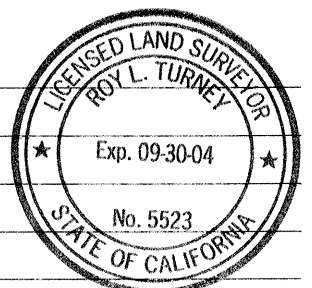
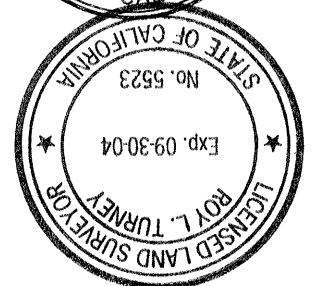
COUNTY SURVEYOR'S STATEMENT

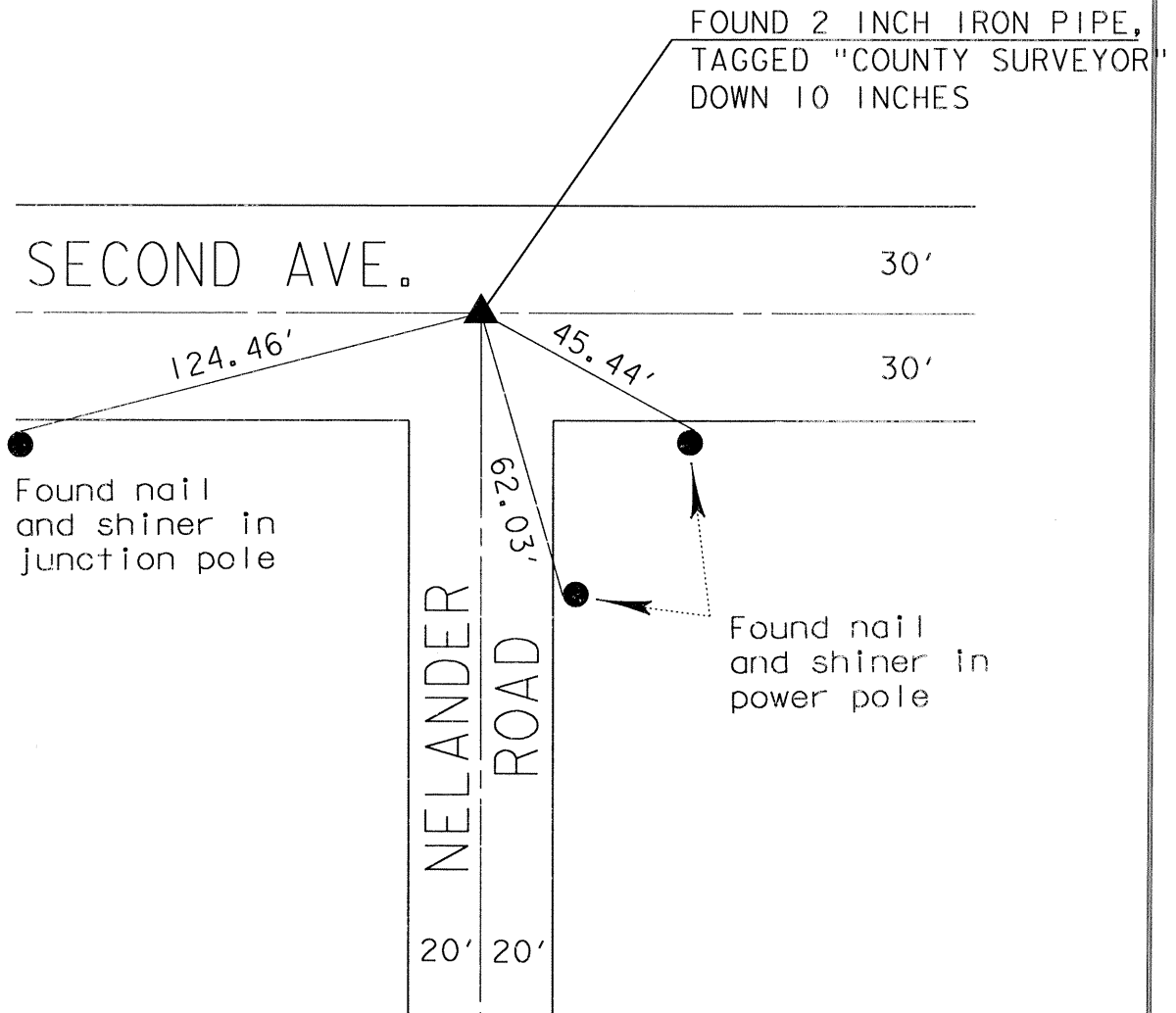
This Corner Record was received AUG 16, 2000 and examined and filed SEPT. 5, 2000.

Signed Roy L. Turney P.L.S. or R.C.E. Number 5523

Title DEPUTY CO. SURVEYOR

County Surveyor's Comment T. 7 S., R. 10 E., M. D. B. & M





County Road
Centerline Monument

124.46' S.W. TO NAIL AND SHINER IN JUNCTION POLE
62.03' S.E. TO NAIL AND SHINER IN POWER POLE
45.44' S.E. TO NAIL AND SHINER IN POWER POLE