

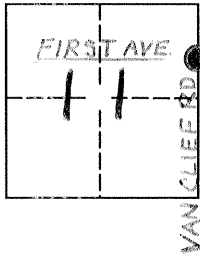
**CORNER RECORD**

DPD-3011A (Rev. 3/98) CT# 7541-4554-2

Document Number 4047

City of \_\_\_\_\_ County of MERCED, California

Brief Legal Description COUNTY ROAD CENTERLINE MONUMENT



**CORNER TYPE**

- Government Corner  Control
- Meander  Property
- Rancho  Other

Date of Survey 2-24-00

**COORDINATES(Optional)**

N. \_\_\_\_\_  
 E. \_\_\_\_\_  
 Zone \_\_\_\_\_ NAD27  NAD83   
 NAD83 Epoch \_\_\_\_\_  
 Elevation \_\_\_\_\_  
 Vert. Datum: NGVD29  NAV88   
 Meas. Units: Metric  Imperial

Corner - Left as found  Established  Reestablished  Rebuilt

Identification and type of corner found: Evidence used to identify or procedure used to establish or reestablish the corner:  
**FOUND 2 INCH IRON PIPE TAGGED "COUNTY SURVEYOR", PER RECORD OF SURVEY FILED IN VOL. 20 OF RECORDS OF SURVEY, PAGE 24, M. C. R.**

A description of the physical condition of the monument as found and as set or reset:  
**FOUND IN GOOD CONDITION, DOWN 4 INCHES. SET 3 SWING TIES.**

**SURVEYOR'S STATEMENT**

This Corner Record was prepared by me or under my direction in conformance with the Land Surveyor's Act on FEB. 24, 2000.

Signed John H. Asher P.L.S. Number 7221  
 For the State of California  
 Department of Transportation



**COUNTY SURVEYOR'S STATEMENT**

This Corner Record was received AUG. 16, 2000 and examined and filed SEPT. 5, 2000.

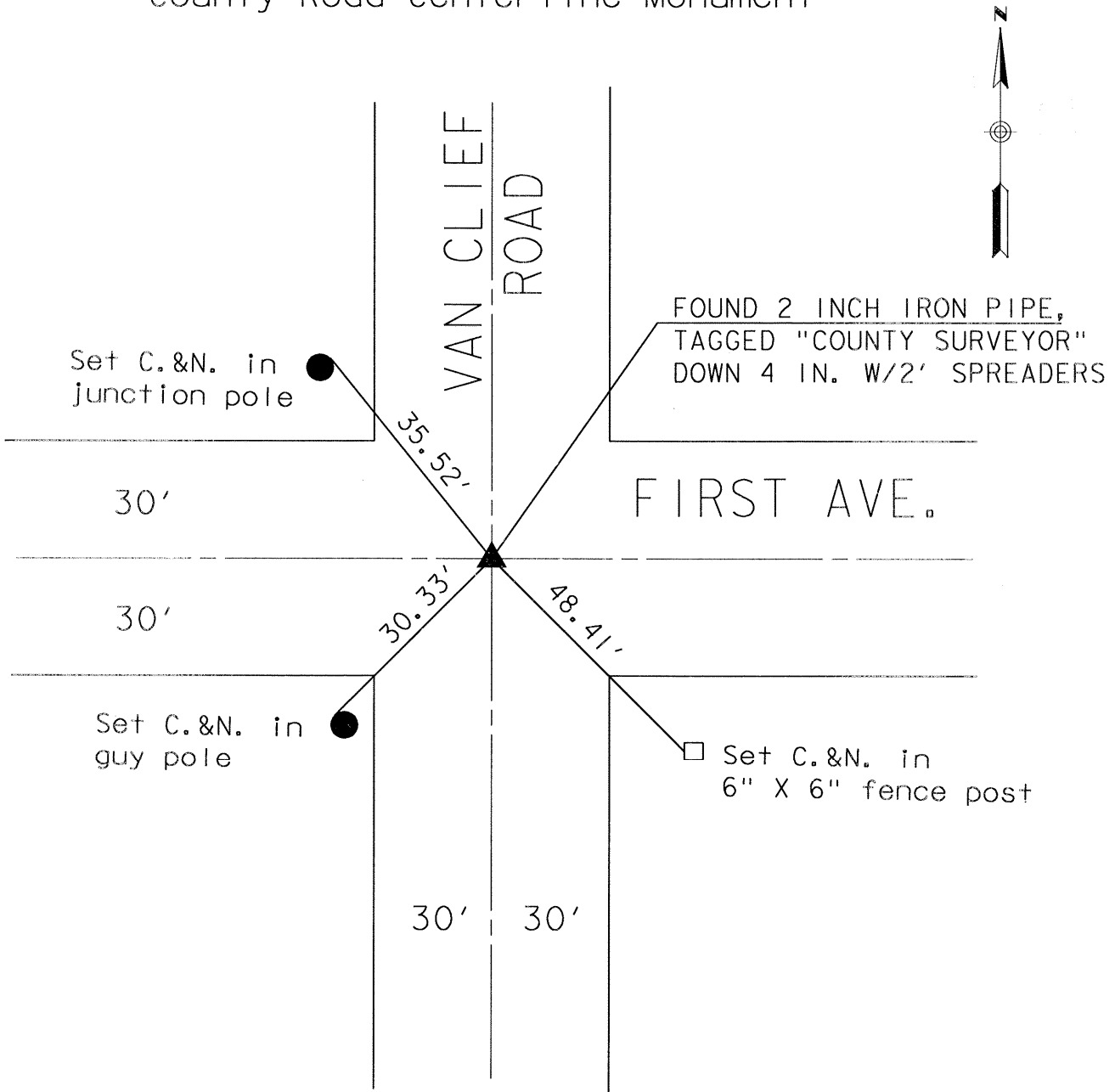
Signed Roy L. Turney P.L.S. or P.C.E. Number 5523

Title DEP. CO. SURVEYOR

County Surveyor's Comment \_\_\_\_\_



# County Road Centerline Monument



35.52' NW TO C&N IN NE'LY FACE OF JUNCTION POLE  
 48.41' SE TO C&N IN WEST FACE 6" X 6" FENCE POST  
 30.33' SW TO C&N IN NW'LY FACE OF GUY POLE