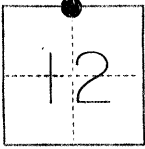


CORNER RECORD

COUNTY OF Merced T. 10 S. R. 10 E. M.D.B. & MERIDIAN CALIFORNIA

CORNER TYPE: GOV'T. CORNER MEANDER RANCHO CONTROL OTHER
CORNER IDENTIFICATION — DATE OF VISIT November 21, 1986



North quarter corner of Section 12, 10/10

CORNER — LEFT AS FOUND FOUND AND TAGGED REESTABLISHED OBLITERATED CORNER REBUILT

PHYSICAL DESCRIPTION OF CORNER FOUND; EVIDENCE AND METHOD USED TO IDENTIFY OR REESTABLISH

Found a 1-1/2" O.D. iron pipe, down 2.0'
Description checks with 26 O.P. 2, M.C.R.

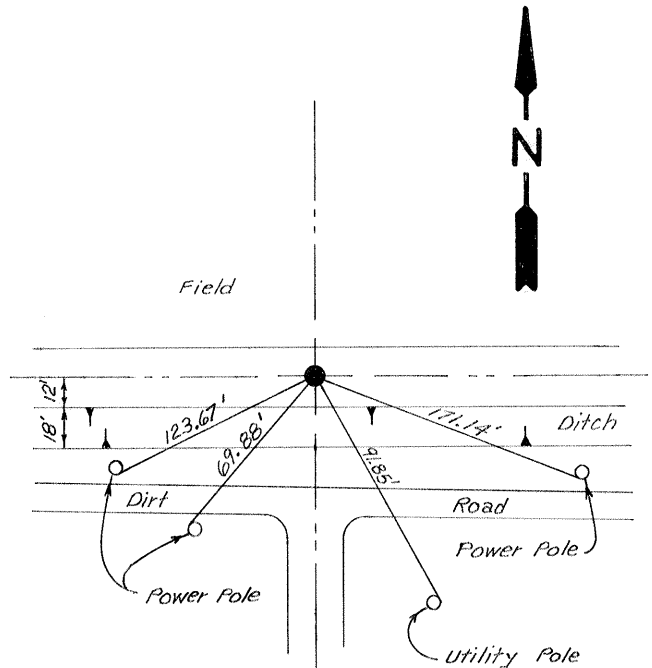
PHYSICAL DESCRIPTION OF MONUMENTS REBUILT OR PERPETUATED

Set plastic plug marked L.S. 5355 in top of 1-1/2" O.D. iron pipe
2.0' below surface

SKETCH: (Include reference tie or witness points, remarks and topo of area)

Ties

- 123.67' Northeast of nail and shiner in power pole.
- 69.88' Northeast of nail and shiner in power pole.
- 91.85' Northwest of nail and shiner in utility pole.
- 171.14' Northwest of nail and shiner in power pole.
- 12' North of north hinge point of ditch.



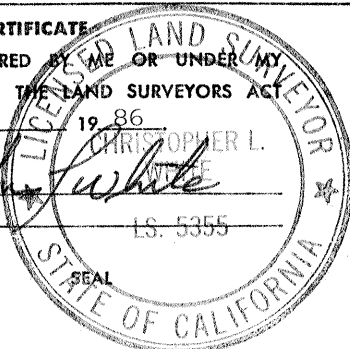
SURVEYOR'S CERTIFICATE

THIS CORNER RECORD WAS PREPARED BY ME OR UNDER MY DIRECTION IN CONFORMANCE WITH THE LAND SURVEYORS ACT ON December 11, 1986

SIGNED: Christopher L. White

L.S. or R.G.E. No.: 5355

Exp 12-31-87



COUNTY SURVEYOR'S CERTIFICATE

THE CORNER RECORD WAS RECEIVED 12/15/1986 AND EXAMINED AND FILED 12/15/1986

BY: Roy T. [Signature]

TITLE: Deputy County Surveyor

DOCUMENT No. 7044

STATEMENT ON BACK OF SHEET

YES

NO