

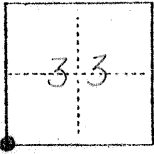
NO 40

CORNER RECORD

CITY OF MERCED T. 6 S. R. 14 E. M.D.B. & MERIDIAN CALIFORNIA

CORNER TYPE: GOV'T. CORNER MEANDER RANCHO CONTROL OTHER

CORNER IDENTIFICATION — DATE OF VISIT June 13 1977



SOUTHWEST COR SECTION 33

CORNER — LEFT AS FOUND FOUND AND TAGGED REESTABLISHED OBLITERATED CORNER REBUILT

PHYSICAL DESCRIPTION OF CORNER FOUND; EVIDENCE AND METHOD USED TO IDENTIFY OR REESTABLISH

FOUND 2"x2" HUB OVER BRASS CAP. M.C.R.D. RECORDS FB. 709 PG. 1
DTD 3-30-73

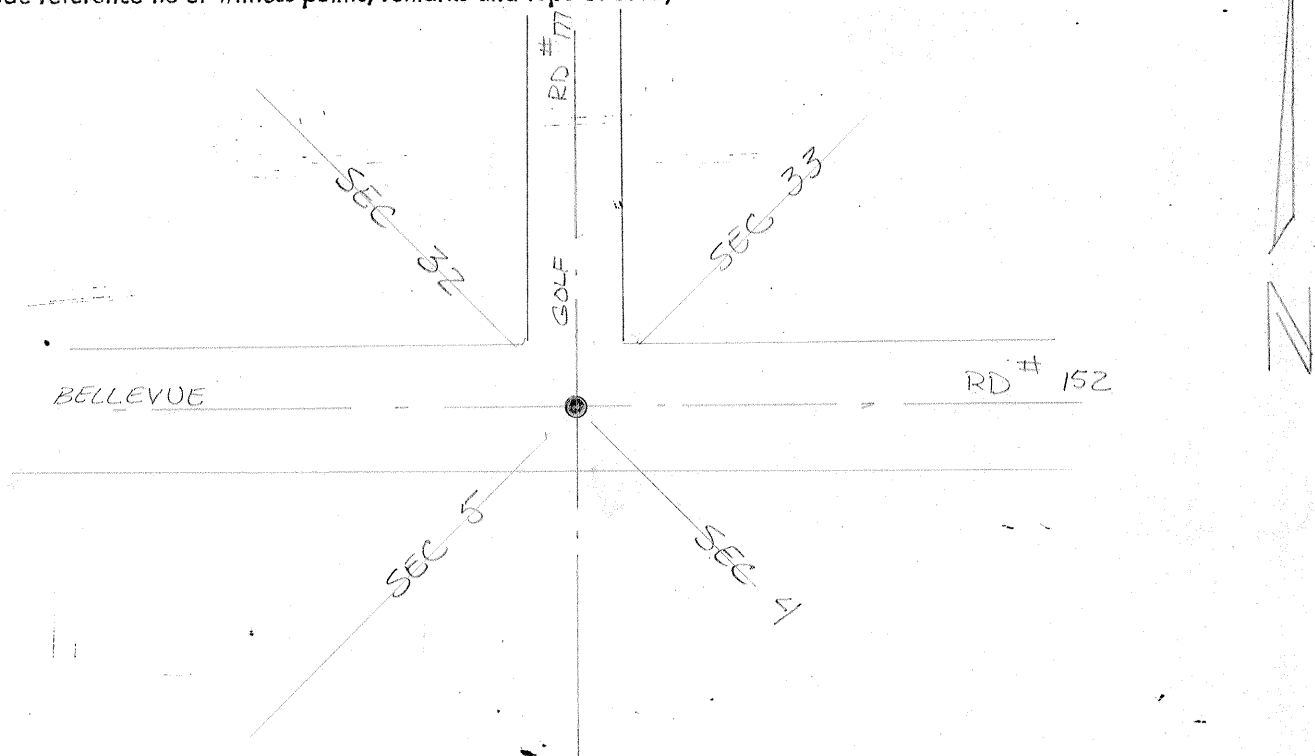
PHYSICAL DESCRIPTION OF MONUMENTS REBUILT OR PERPETUATED

SET 5/8" IRON ROD OVER BRASS CAP, IN SURVEY ENCASEMENT, TAGGED
COUNTY SURVEYOR.

CALIFORNIA COORDINATE SYSTEM ORDER: FIRST SECOND THIRD
STATIONS USED: NGS (USC & GS) STATE COUNTY OTHER STATION _____ STATION _____
ZONE _____ ELEVATION _____ NORTHINGS (Y) _____ EASTINGS (X) _____

(Fold)

SKETCH: (Include reference tie or witness points, remarks and topo of area)



SURVEYOR'S CERTIFICATE

THIS CORNER RECORD WAS PREPARED BY ME OR UNDER MY DIRECTION IN CONFORMANCE WITH THE LAND SURVEYORS ACT
Of _____ 19____

SIGNED: _____

L.S. or R.C.E. No.: _____

SEAL

COUNTY SURVEYOR'S CERTIFICATE

THE CORNER RECORD WAS RECEIVED _____ 19____
AND EXAMINED AND FILED _____ 19____

BY: _____

TITLE: _____

DOCUMENT No. 4034

STATEMENT ON BACK OF SHEET

YES NO