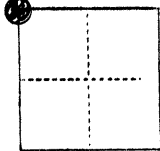


COUNTY OF Merced T. 12 South R. 9 East Mr. Diablo MERIDIAN CALIFORNIA

CORNER TYPE: GOV'T. CORNER MEANDER RANCHO CONTROL OTHER
CORNER IDENTIFICATION — DATE OF VISIT December 1975



Northwest Corner, Section 3, 12/9, M.D.B.&M.

CORNER — LEFT AS FOUND FOUND AND TAGGED REESTABLISHED OBLITERATED CORNER REBUILT

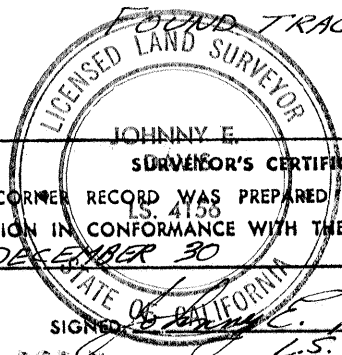
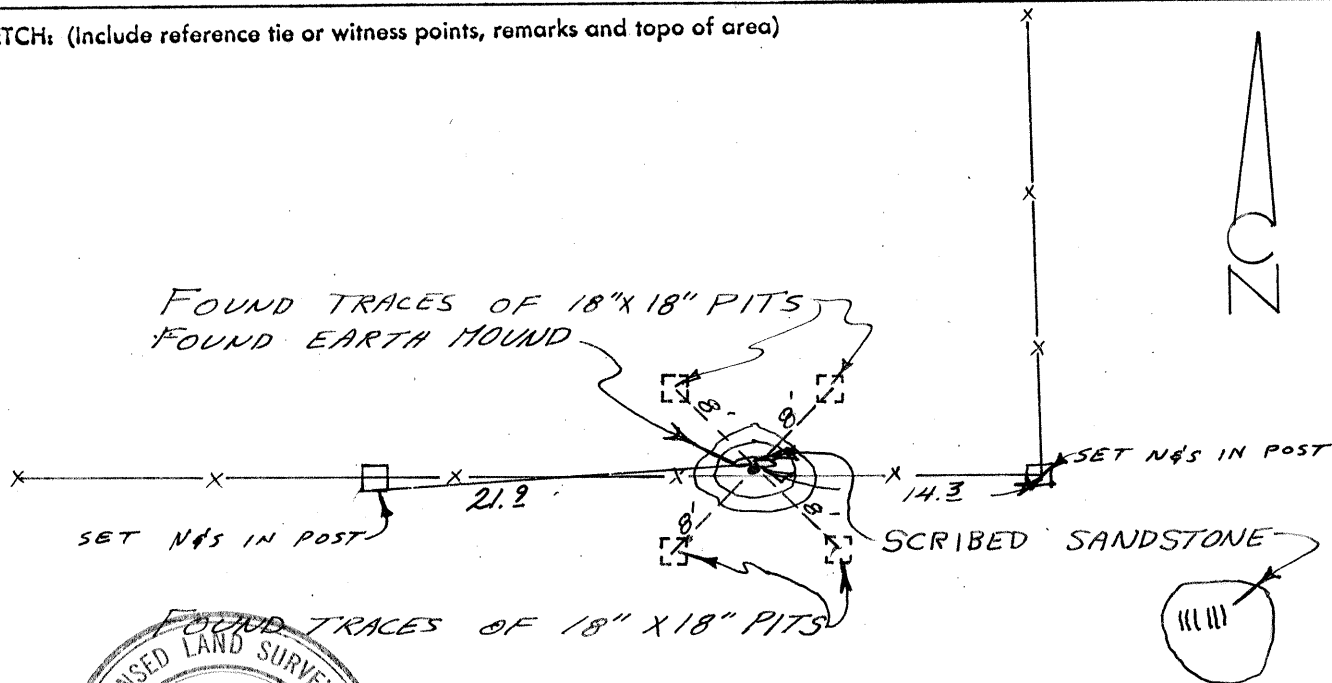
PHYSICAL DESCRIPTION OF CORNER FOUND; EVIDENCE AND METHOD USED TO IDENTIFY OR REESTABLISH

Found a 12" x 12" x 4" scribed sandstone at 20 feet Southeast of a mound of earth with traces of pits at 8 feet Southwest, 8 feet Southeast, 8 feet Northeast, and 8 feet Northwest. Reset sandstone in earth mound and set a 1" o.d. x 28" galvanized iron pipe along South side of sandstone.

PHYSICAL DESCRIPTION OF MONUMENTS REBUILT OR PERPETUATED

CALIFORNIA COORDINATE SYSTEM ORDER: FIRST SECOND THIRD
STATIONS USED: NGS (USC & GS) STATE COUNTY OTHER STATION _____ STATION _____
ZONE _____ ELEVATION _____ NORTHINGS (Y) _____ EASTINGS (X) _____

SKETCH: (include reference tie or witness points, remarks and topo of area)



JOHNNY E. DAVIS
SURVEYOR'S CERTIFICATE

THIS CORNER RECORD WAS PREPARED BY ME OR UNDER MY DIRECTION IN CONFORMANCE WITH THE LAND SURVEYORS ACT ON DECEMBER 30 1975

SIGNED Johnny E. Davis L.S. 4156

COUNTY SURVEYOR'S CERTIFICATE

THE CORNER RECORD WAS RECEIVED _____ 19____
AND EXAMINED AND FILED _____ 19____
BY: _____
TITLE: _____

DOCUMENT No. 4025

STATEMENT ON BACK OF SHEET