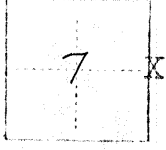


4024

CORNER RECORD

COUNTY OF MERCED T. 10 S. R. 10 E. M.D.B. 24M. MERIDIAN CALIFORNIA
CORNER TYPE: GOV'L CORNER [X] MEANDER [] RANCHO [] CONTROL [] OTHER [X]
CORNER IDENTIFICATION - DATE OF VISIT FEB 11 1979



CORNER IS ALSO THE S. E. PROPERTY CORNER OF BRUCE VOGEL PARCEL # 6 BOOK 81-PG. 07 ASSESSORS MAP.

CORNER - LEFT AS FOUND [] FOUND AND TAGGED [X] REESTABLISHED OBLITERATED CORNER [] RESULT []

PHYSICAL DESCRIPTION OF CORNER FOUND; EVIDENCE AND METHOD USED TO IDENTIFY OR REESTABLISH
FOUND 3/8" GALV. IRON PIPE 0.3 FT. ABOVE GROUND. THE CORNER IS 1.0 FT. EAST OF A N. - S. FENCE, 5.65 FT. NORTH OF A FENCE CORNER. 4.0 WEST OF THE CENTER-LINE OF A DITCH (BIBBY DITCH).
I TRAVERSED SOUTH FROM THE N.E. CORNER OF SECTION 7 T10S; R10E. TO THE 1/4 CORNER. INVERSE DIST. 2640.28 RECORD DIST. 2640.11 (FROM M&T. SUB. SEC 7). BEARING INVERSE S 0-50-17 W. RECORD S 0-48- W (FROM M&T. SUB. SEC 7).

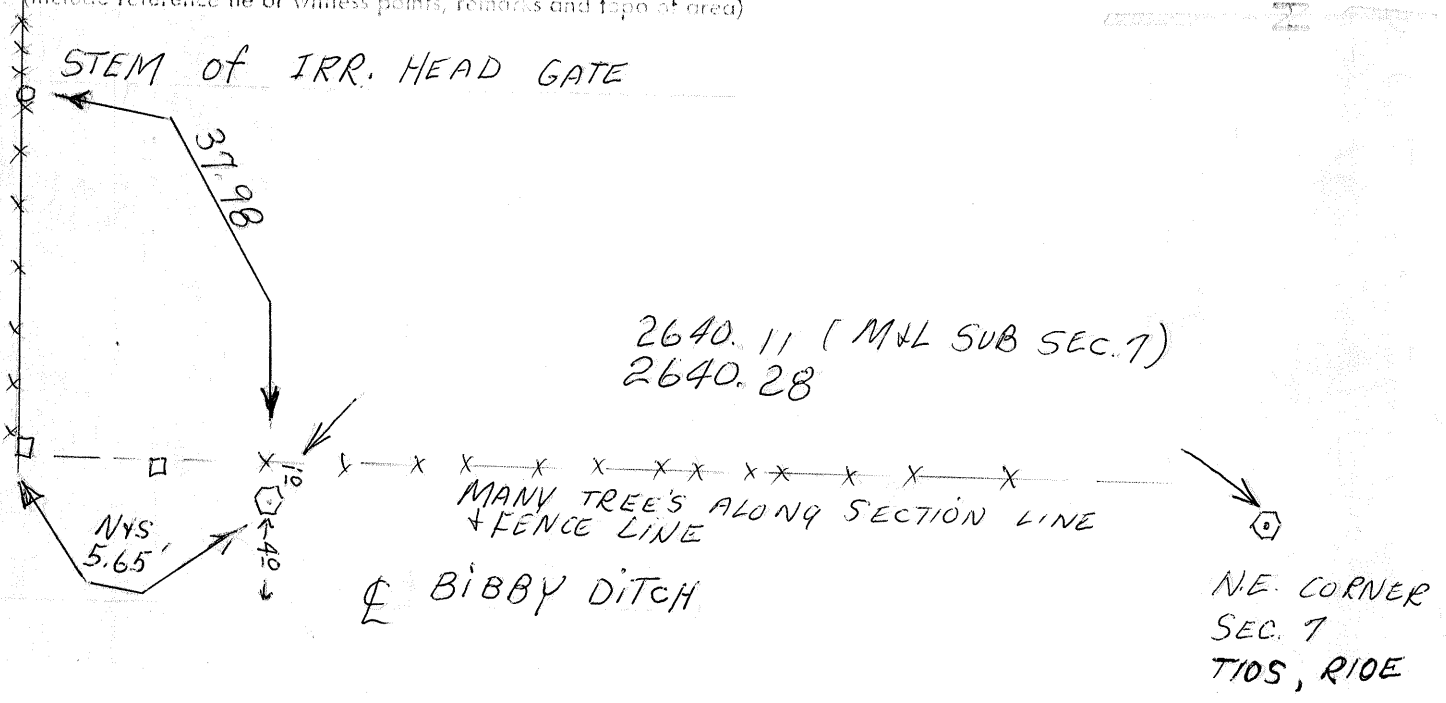
PHYSICAL DESCRIPTION OF MONUMENTS REBUILT OR PERPETUATED

TAGGED 3/8" IRON PIPE I.S. 4578.

CALIFORNIA COORDINATE SYSTEM ORDER: FIRST [] SECOND [] THIRD []
STATIONS USED: NGS (USC & GS) [] STATE [] COUNTY [] OTHER [] STATION _____ STATION _____
ZONE _____ ELEVATION _____ NORTHINGS (Y) _____ EASTINGS (X) _____

(Fold)

SKETCH (Include reference tie or witness points, remarks and topo of area)



SURVEYOR'S CERTIFICATE
THE CORNER RECORD WAS PREPARED BY ME OR UNDER MY SUPERVISION IN CONFORMANCE WITH THE CALIF. SURVEYORS ACT
SIGNED: [Signature] 4/25/79
SEAL: DAVID F. JONES No. 4578 STATE OF CALIFORNIA

COUNTY SURVEYOR'S CERTIFICATE
THE CORNER RECORD WAS RECEIVED _____ 19____ AND EXAMINED AND FILED _____ 19____
DOCUMENT NO. 4024
STATEMENT ON BACK OF SHEET YES [] NO []