

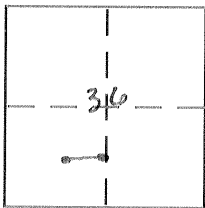
# CORNER RECORD

Document Number 597, 978, 2360, 3989, 3989-C

City of \_\_\_\_\_

County of MERCED, California

Brief Legal Description N. LINE OF LOT 35, YOUNGSTOWN COLONY 2 O.P. 67 M.C.R.



### CORNER TYPE

Government Corner  Control   
 Meander  Property   
 Rancho  Other   
 Date of Survey 12-29-05

### COORDINATES (Optional)

N. \_\_\_\_\_  
 E. \_\_\_\_\_  
 Zone \_\_\_\_\_ NAD27  NAD83   
 NAD83 Epoch \_\_\_\_\_  
 Elev. \_\_\_\_\_  
 Vert. Datum: NGVD29  NAVD88   
 Meas. Units: Metric  Imperial

Corner -- Left as found  Found and tagged  Established  Reestablished  Rebuilt

Identification and type of corner found: Evidence used to identify or procedure used to establish or reestablish the corner:

SEE SKETCH

A description of the physical condition of the monument as found and as set or reset:

SEE SKETCH

### SURVEYOR'S STATEMENT

This Corner Record was prepared by me or under my direction in conformance with the Land Surveyor's Act on April 13 2006

Signed [Signature] P.L.S or R.C.E. No. \_\_\_\_\_



### COUNTY SURVEYOR'S STATEMENT

This Corner Record was received April 13, 2006

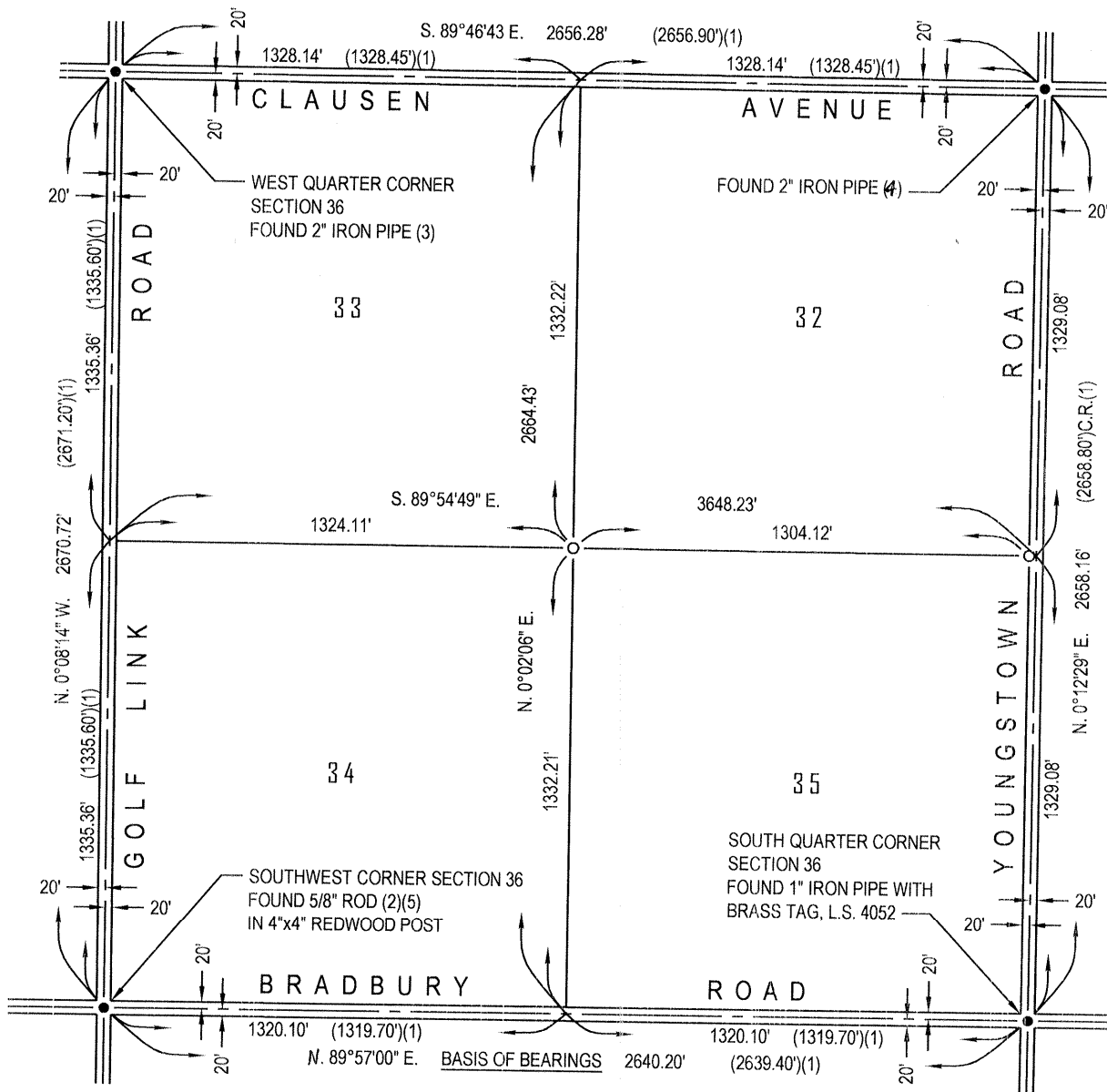
and examined and filed April 24, 2006

Signed [Signature] P.L.S or R.C.E. No. 4895

Title Dep. County Surveyor

County Surveyor's Comment \_\_\_\_\_





**REFERENCES:**

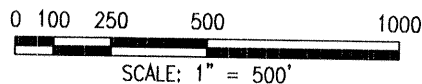
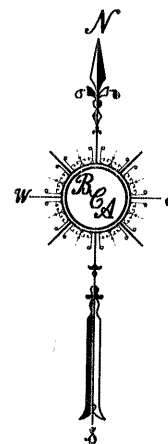
- (1) Youngstown Colony, 2 O.P. 67, M.C.R.
- (2) Record of Survey, 11 R.S. 13, M.C.R.
- (3) Parcel Map for Howard Watts, 18 P.M. 39, M.C.R.
- (4) Parcel Map for N.J. Falany, 38 P.M. 29, M.C.R.
- (5) Record of Survey for Frank Vervoort, 36 R.S. 41, M.C.R.

**BASIS OF BEARINGS:**

N. 89°57'00" E. for the centerline of Bradbury Road as shown on the Parcel Map for Joe M. Coelho, Volume 17, Parcel Maps, Page 36, Merced County Records.

**LEGEND**

- Found and accepted monument as indicated.
- Set 3/4" iron pipe, L.S. 4403



C:\01\Maps\Maps2005\05124\dwg\05124 cr.dwg Date: 04/13/06 By: AThomson