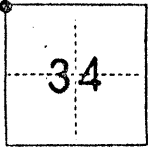


CORNER RECORD

COUNTY OF Merced T. 11 S R. 11 E M.D.B. & MERIDIAN CALIFORNIA

CORNER TYPE: GOV'T. CORNER MEANDER RANCHO CONTROL OTHER

CORNER IDENTIFICATION — DATE OF VISIT October 16, 1985



Northwest corner of Section 34, 11/11.

CORNER — LEFT AS FOUND FOUND AND TAGGED REESTABLISHED OBLITERATED CORNER REBUILT

PHYSICAL DESCRIPTION OF CORNER FOUND; EVIDENCE AND METHOD USED TO IDENTIFY OR REESTABLISH

1" iron rod, 0.5' below ground surface.

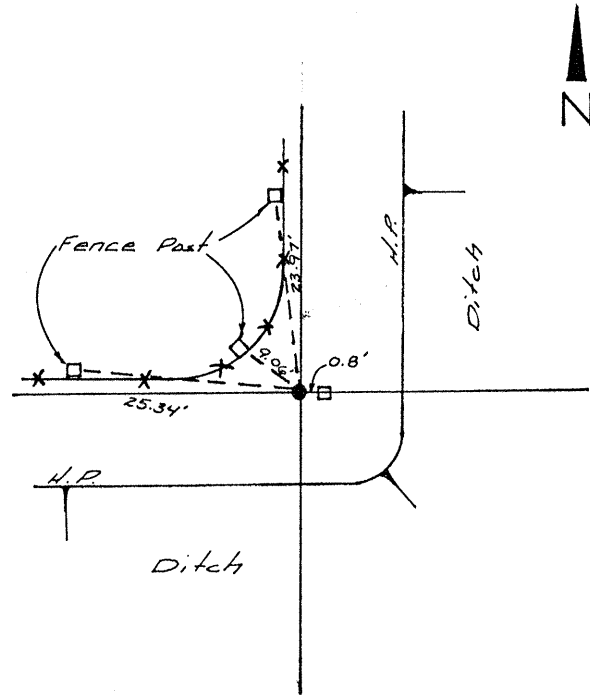
PHYSICAL DESCRIPTION OF MONUMENTS REBUILT OR PERPETUATED

Set tag L.S. 5355

SKETCH: (Include reference tie or witness points, remarks and topo of area)

Ties

- 23.97' South of nail and shiner on top of 3" x 3 1/2" fence post.
- 9.06' Southeast of nail and shiner on 4 1/2" x 4 1/2" fence post.
- 25.34' East of nail and shiner on 3" x 3" fence post.
- 0.8' West of centerline of 4" x 6" fence post base.



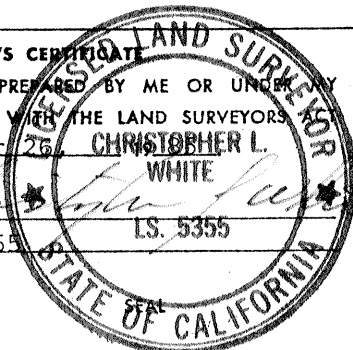
SURVEYOR'S CERTIFICATE

THIS CORNER RECORD WAS PREPARED BY ME OR UNDER MY DIRECTION IN CONFORMANCE WITH THE LAND SURVEYORS ACT ON November 26 1985

CHRISTOPHER L. WHITE

SIGNED: [Signature] L.S. 5355

L.S. or XXXXX No.: 5355



COUNTY SURVEYOR'S CERTIFICATE

THE CORNER RECORD WAS RECEIVED _____ 19____ AND EXAMINED AND FILED 12-9- 1985

BY: Roy Turner TITLE: Deputy County Surveyor

DOCUMENT No. 3966

STATEMENT ON BACK OF SHEET

YES NO