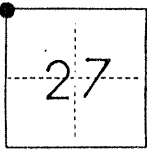


CORNER RECORD

COUNTY OF Merced T. 11 S R. 11 E M.D.B. & MERIDIAN CALIFORNIA

CORNER TYPE: GOV'T. CORNER MEANDER RANCHO CONTROL OTHER

CORNER IDENTIFICATION — DATE OF VISIT October 16, 1985



Northwest corner of Section 27, 11/11.

CORNER — LEFT AS FOUND FOUND AND TAGGED REESTABLISHED OBLITERATED CORNER REBUILT

PHYSICAL DESCRIPTION OF CORNER FOUND; EVIDENCE AND METHOD USED TO IDENTIFY OR REESTABLISH

1" O.D. iron pipe in a 2½" x 2½" redwood, 2½" above ground level.

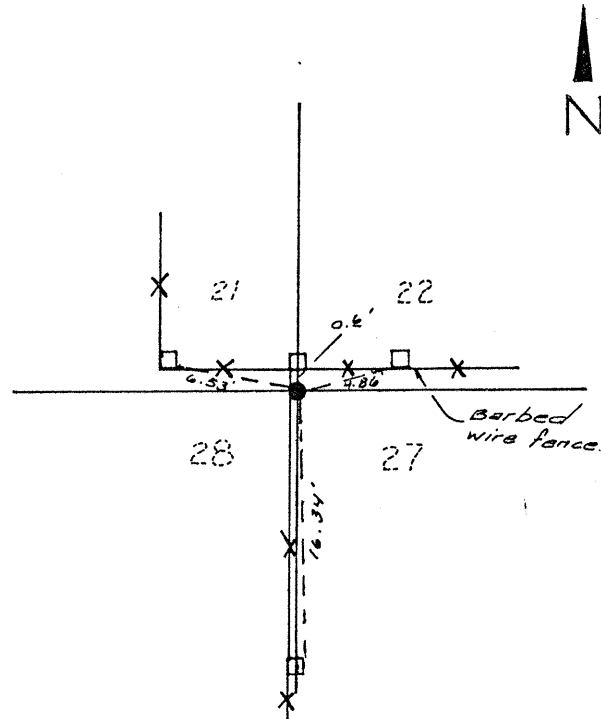
PHYSICAL DESCRIPTION OF MONUMENTS REBUILT OR PERPETUATED

Set tag L.S. 5355

SKETCH: (Include reference tie or witness points, remarks and topo of area)

Ties

- 0.6' South of center of 3" x 5" fence post.
- 16.34' North of nail and shiner in 4" x 4" fence post.
- 4.86' West of nail and shiner in 4" x 4" fence post.
- 6.53' East of nail and shiner in 4" x 4" fence post.



SURVEYOR'S CERTIFICATE
 THIS CORNER RECORD WAS PREPARED BY ME OR UNDER MY DIRECTION IN CONFORMANCE WITH THE LAND SURVEYORS' ACT ON November 26 1985

SIGNED: [Signature]
 L.S. or XXXX No.: 5355



COUNTY SURVEYOR'S CERTIFICATE
 THE CORNER RECORD WAS RECEIVED _____ 19____
 AND EXAMINED AND FILED 12-9-1985
 BY: Ray Tunney
 TITLE: Deputy County Surveyor
 DOCUMENT No. 3959

STATEMENT ON BACK OF SHEET

YES NO