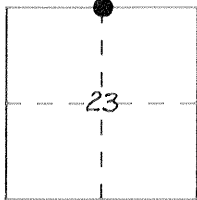


CORNER RECORD

Document Number 3943

City of \_\_\_\_\_ County of MERCED, California

Brief Legal Description NORTH 1/4 CORNER SECTION 23 T.7S., R.11E., M.D.B.&M.



CORNER TYPE

COORDINATES (Optional)

Government Corner  Control   
Meander  Property   
Rancho  Other   
Date of Survey 7-15-94

N. \_\_\_\_\_  
E. \_\_\_\_\_  
Zone \_\_\_\_\_ Datum \_\_\_\_\_  
Elev. \_\_\_\_\_

Corner — Left as found  Found and tagged  Established  Reestablished  Rebuilt

Identification and type of corner found: Evidence used to identify or procedure used to establish or reestablish the corner:  
FOUND 1" IRON PIPE DOWN 0.5' ALSO FOUND 3/4" IRON PIPE 19.01' EAST OF 1" I.P. 3/4" I.P. FLUSH WITH PAVEMENT.  
CORNER ORIGIN CONCIDES WITH RECORD OF SURVEY MAPS IN VOL. 9 PG. 4 AND VOL. 15 PG. 49 AND PARCEL MAP IN VOL. 41 PG. 35.

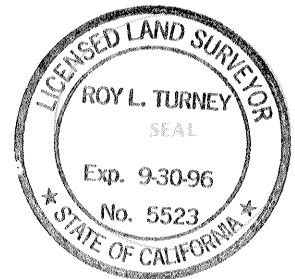
A description of the physical condition of the monument as found and as set or reset: MONUMENTS IN GOOD CONDITION.

POINT WAS TIED OUT PRIOR TO PAVEMENT PULVERIZATION PROJECT

SURVEYOR'S STATEMENT

This Corner Record was prepared by me or under my direction in conformance with the Land Surveyors' Act on JULY 22 1994.

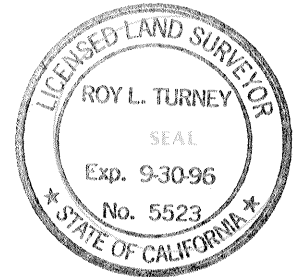
Signed Roy L. Turney L.S. or ~~REG.~~ Number 5523



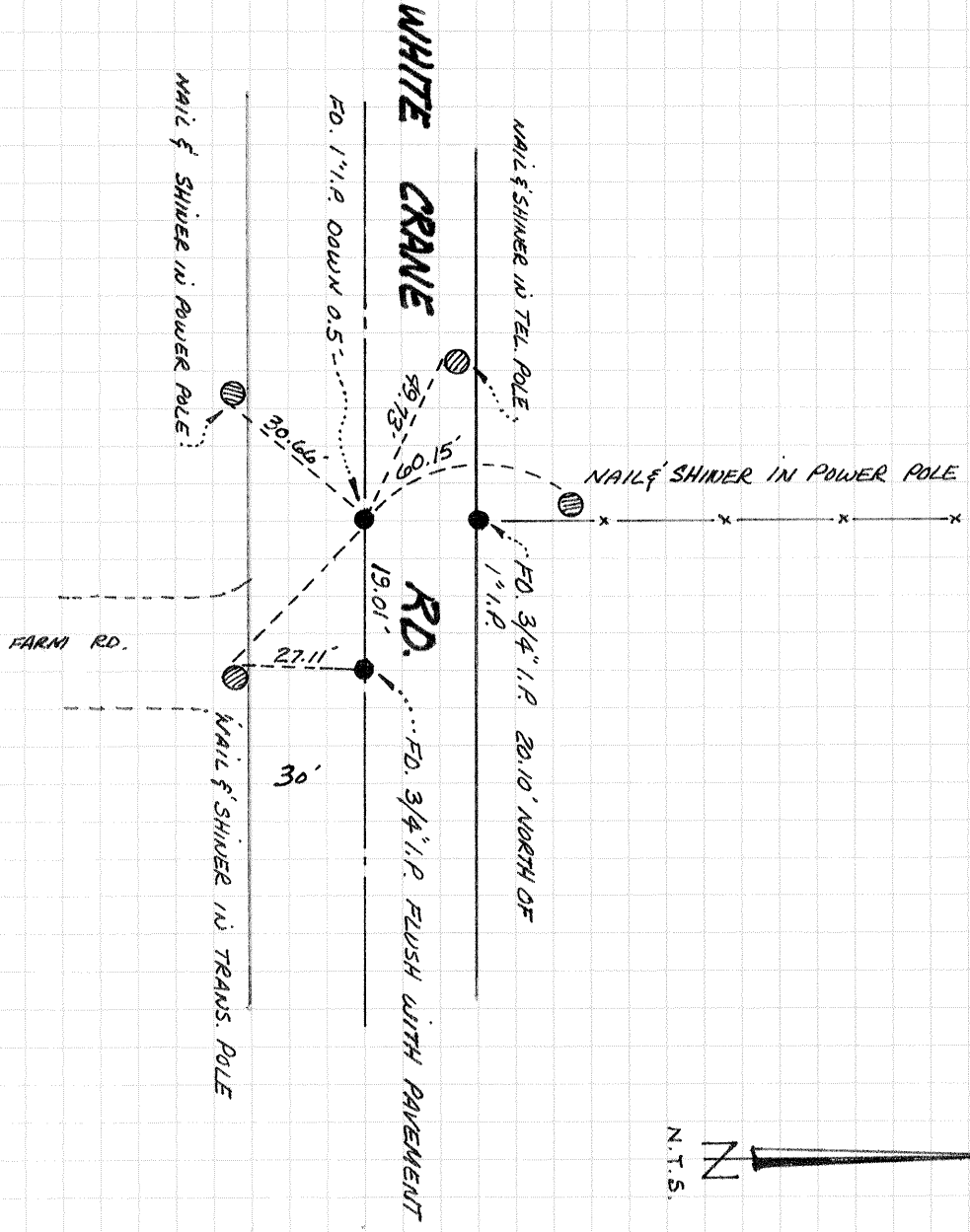
COUNTY SURVEYOR'S STATEMENT

This Corner Record was received JULY 22 1994 and examined and filed JULY 22 1994.

Signed Roy L. Turney Title DEPUTY CO. SURVEYOR



County Surveyor's Comment \_\_\_\_\_



THE THINGS SHOWN HEREON ARE FOR THE PURPOSE OF PERPETUATING THE MOVEMENTATION  
 CURRENTLY EXISTING. NO ATTEMPT WAS MADE TO DETERMINE THE VALIDITY OF THE  
 MONUMENTS OR THEIR PROPER LOCATION IN RELATION TO LEGAL BOUNDARY LINES IN THE AREA.