

**CORNER RECORD**

Document Number 3926-D, E, F, G & H

City of Cressey

County of Merced, California

Brief Legal Description Parcel 4 & Adjoiner

43 PM 13



6/12

**CORNER TYPE**

- Government Corner
- Meander
- Rancho
- Date of Survey 5-1-02
- Control
- Property
- Other

**COORDINATES (Optional)**

N. \_\_\_\_\_  
 E. \_\_\_\_\_  
 Zone \_\_\_\_\_ Datum \_\_\_\_\_  
 Elev. \_\_\_\_\_

Corner — Left as found  Found and tagged  Established  Reestablished  Rebuilt

Identification and type of corner found: Evidence used to identify or procedure used to establish or reestablish the corner:

See back

A description of the physical condition of the monument as found and as set or reset:

See back

**SURVEYOR'S STATEMENT**

This Corner Record was prepared by me or under my direction in conformance with the Land Surveyors' Act on 5-17 2002 19  .

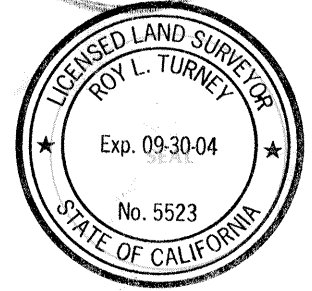
Signed [Signature] L.S. or R.C.E. Number \_\_\_\_\_



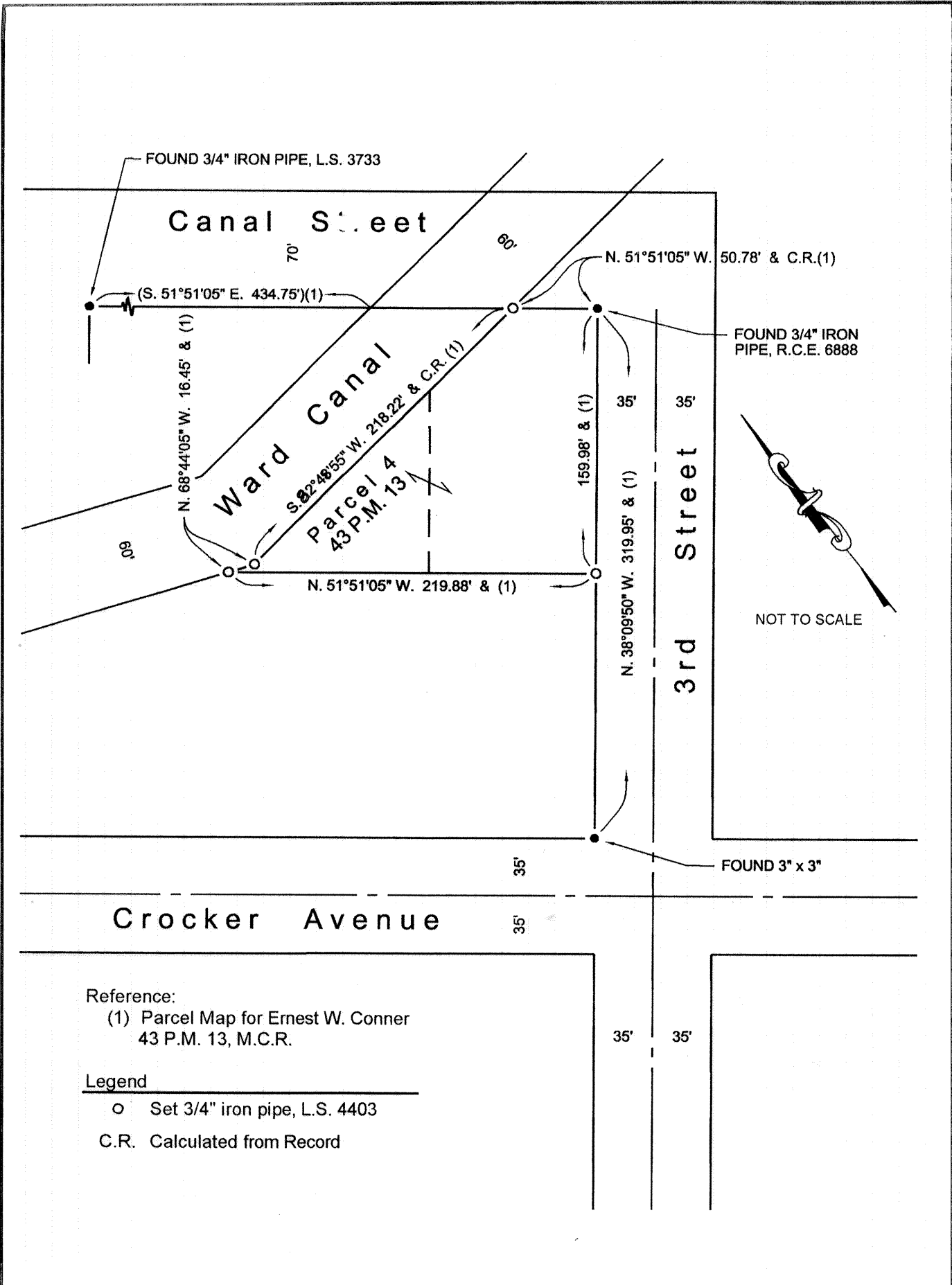
**COUNTY SURVEYOR'S STATEMENT**

This Corner Record was received 5-17- 1902 and examined and filed JUNE 27 192002

Signed [Signature] Title DEP. CO. SURVEYOR



County Surveyor's Comment [Signature]



Reference:

- (1) Parcel Map for Ernest W. Conner  
43 P.M. 13, M.C.R.

Legend

- Set 3/4" iron pipe, L.S. 4403
- C.R. Calculated from Record