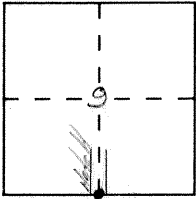


# CORNER RECORD

Document Number 3912

City of \_\_\_\_\_ County of MERCED, California

Brief Legal Description So 1/4 COR. SEC. 9 T7S; R14E.



### CORNER TYPE

Government Corner  Control   
 Meander  Property   
 Rancho  Other   
 Date of Survey 7-29-92

### COORDINATES (Optional)

N. \_\_\_\_\_  
 E. \_\_\_\_\_  
 Zone \_\_\_\_\_ Datum \_\_\_\_\_  
 Elev. \_\_\_\_\_

Corner — Left as found  Found and tagged  Established  Reestablished  Rebuilt

Identification and type of corner found: Evidence used to identify or procedure used to establish or reestablish the corner:

FO. 1/4 I.P. TAG L.S. 3733  
INTERSECTION Hatch Road & YOSEMITE AVE.

BK 658-169

A description of the physical condition of the monument as found and as set or reset: \_\_\_\_\_

Monument by set over existing monument. 8-30-93

### SURVEYOR'S STATEMENT

This Corner Record was prepared by me or under my direction in conformance with the Land Surveyors' Act on Sept. 7 19 93.

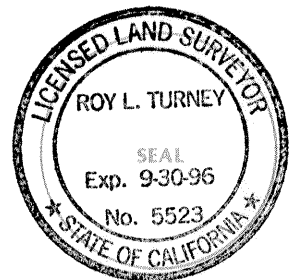
Signed [Signature] L.S. or R.C.E. Number \_\_\_\_\_



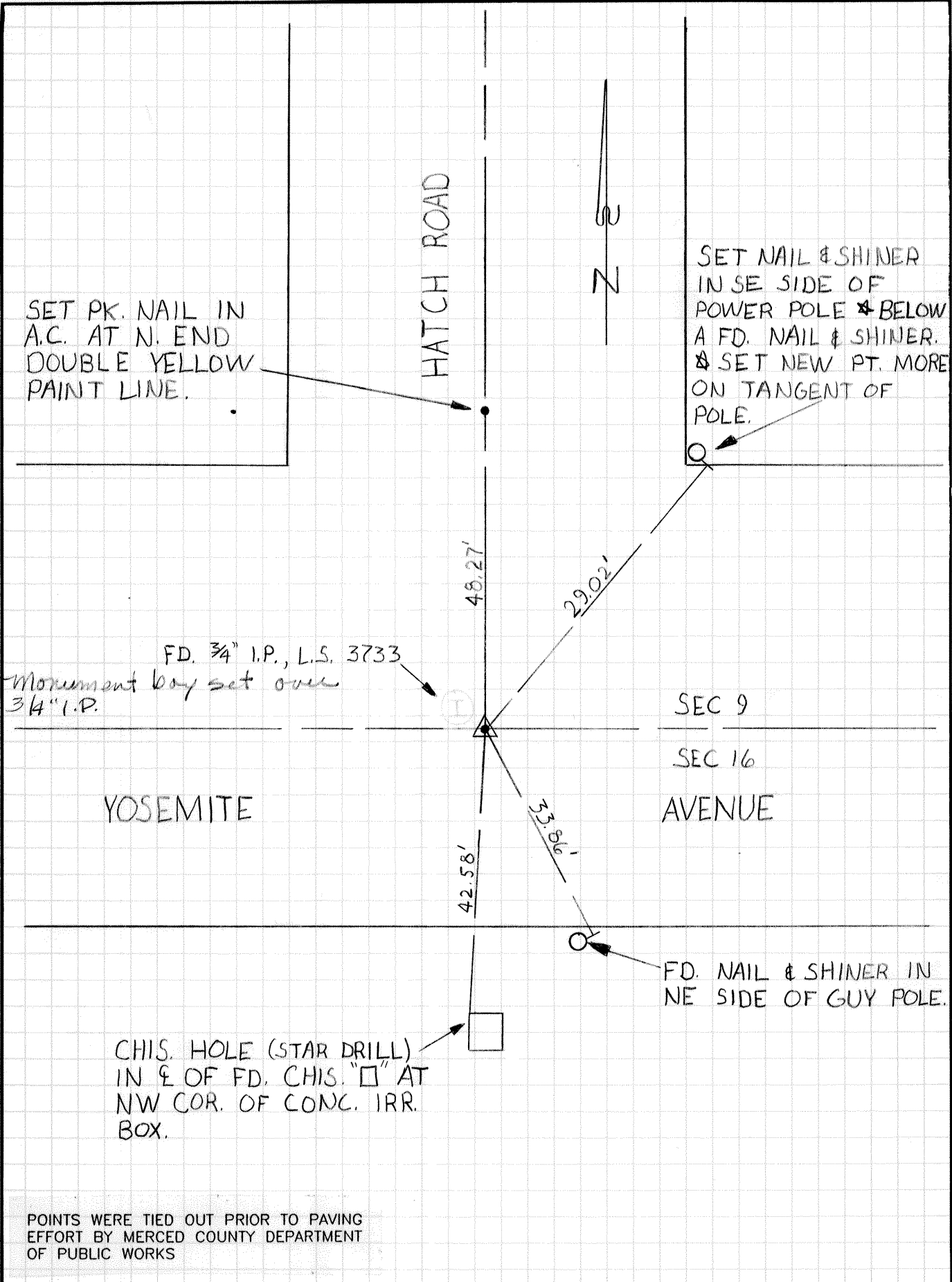
### COUNTY SURVEYOR'S STATEMENT

This Corner Record was received \_\_\_\_\_ 19 \_\_\_\_ and examined and filed \_\_\_\_\_ 19 \_\_\_\_.

Signed \_\_\_\_\_ Title \_\_\_\_\_



County Surveyor's Comment See 45-P.M-43 and 28-PM-35



SET PK. NAIL IN A.C. AT N. END DOUBLE YELLOW PAINT LINE.

HATCH ROAD



SET NAIL & SHINER IN SE SIDE OF POWER POLE \* BELOW A FD. NAIL & SHINER. \* SET NEW PT. MORE ON TANGENT OF POLE.

48.27'

29.02'

FD. 3/4" I.P., L.S. 3733

Monument box set over 3/4" I.P.

SEC 9

SEC 16

YOSEMITE

AVENUE

33.89'

42.58'

FD. NAIL & SHINER IN NE SIDE OF GUY POLE.

CHIS. HOLE (STAR DRILL) IN ♀ OF FD. CHIS. "□" AT NW COR. OF CONC. IRR. BOX.

POINTS WERE TIED OUT PRIOR TO PAVING EFFORT BY MERCED COUNTY DEPARTMENT OF PUBLIC WORKS