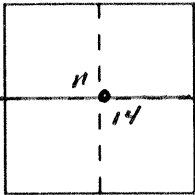


CORNER RECORD

Document Number 3904

City of _____ County of MERCED, California

Brief Legal Description N. 1/4 COR. SECT. 14 T10S R11E MDBEM



CORNER TYPE

Government Corner Control
Meander Property
Rancho Other
Date of Survey 6-7-90

**COORDINATES
(Optional)**

N. _____
E. _____
Zone _____ Datum _____
Elev. _____

Corner — Left as found Found and tagged Established Reestablished Rebuilt

Identification and type of corner found: Evidence used to identify or procedure used to establish or reestablish the corner: N. 1/4 COR SECT 14 - Fd. 3/4" I. PIN (REBAR) WITH 2'

RP'S - RESET RP'S @ 2.00' N.W. ly & S.W. ly. BRS 37 & 38 PM 43

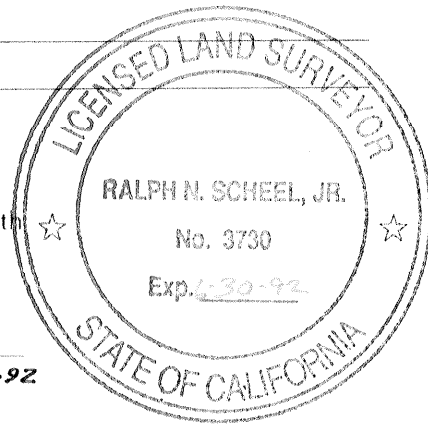
A description of the physical condition of the monument as found and as set or reset: _____

MONUMENT APPEARS TO BE IN GOOD CONDITION, DOWN 0.3

SURVEYOR'S STATEMENT

This Corner Record was prepared by me or under my direction in conformance with the Land Surveyors' Act on JUNE 7 1990.

Signed Ralph N. Scheel, Jr. L.S. or R.C.E. Number LS3730
LIC EXP 6-30-92



COUNTY SURVEYOR'S STATEMENT

This Corner Record was received August 1990 and examined and filed August 22 1990.

Signed Roy L. Turney Title Dep. Co. Surveyor

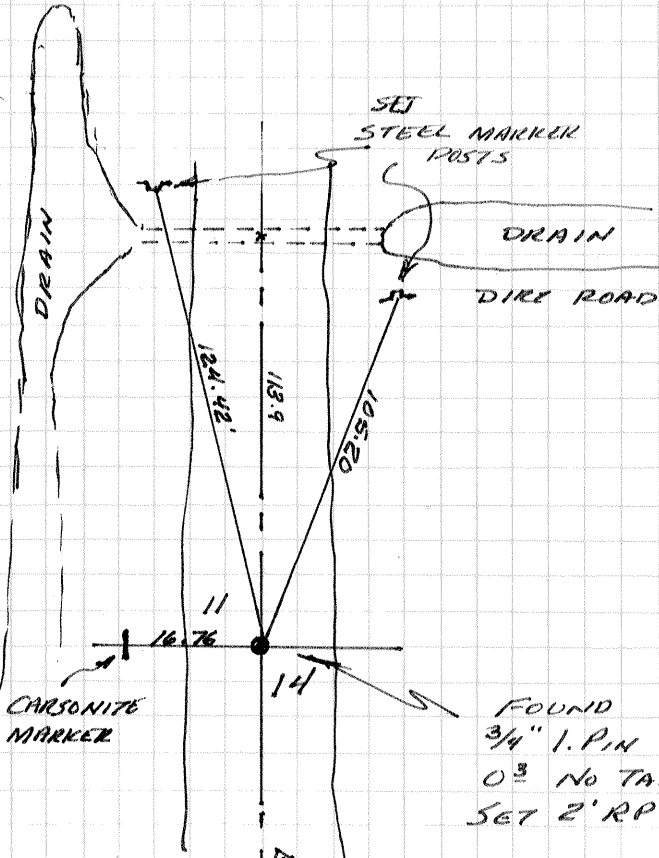
County Surveyor's Comment COR. # 3904





TIOSR11E
MOBEM

DIRT ROAD



FOUND
3/4" I. PIN DOWN
0³ NO TAG
SET 2' RPS

SEE 8 RS 37
38 PM 43