

CORNER RECORD

Document Number 3893-A

City of _____ County of MERCED, California

Brief Legal Description N.W. & S.W. CORNERS OF LOT 18, 39 O.P. 3, M.C.R.



CORNER TYPE

Government Corner Control
Meander Property
Rancho Other
Date of Survey 8-16-05

COORDINATES (Optional)

N. _____
E. _____
Zone _____ NAD27 NAD83
NAD83 Epoch _____
Elev. _____
Vert. Datum: NGVD29 NAVD88
Meas. Units: Metric Imperial

T65, R14E

Corner - Left as found Found and tagged Established Reestablished Rebuilt

Identification and type of corner found: Evidence used to identify or procedure used to establish or reestablish the corner:
REESTABLISHED THE N.W. & S.W. CORNERS OF LOT 18 AS SHOWN ON
"MAP OF RANCHO CARMELA", RECORDED IN BOOK 39 OF OFFICIAL PLATS
AT PAGE 3 AND 4, MERCED COUNTY RECORDS.
SEE PLAT ON REVERSE SIDE

A description of the physical condition of the monument as found and as set or reset: SET 3/4" IRON PIPE
WITH L.S. 7621 TAG.
SEE PLAT ON REVERSE SIDE.

SURVEYOR'S STATEMENT

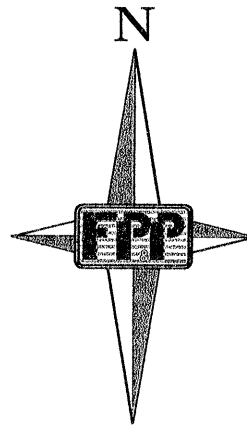
This Corner Record was prepared by me or under my direction in conformance with
the Land Surveyor's Act on August 22, 2005
Signed David D. Heinrichs P.L.S or R.C.E. No. 7621



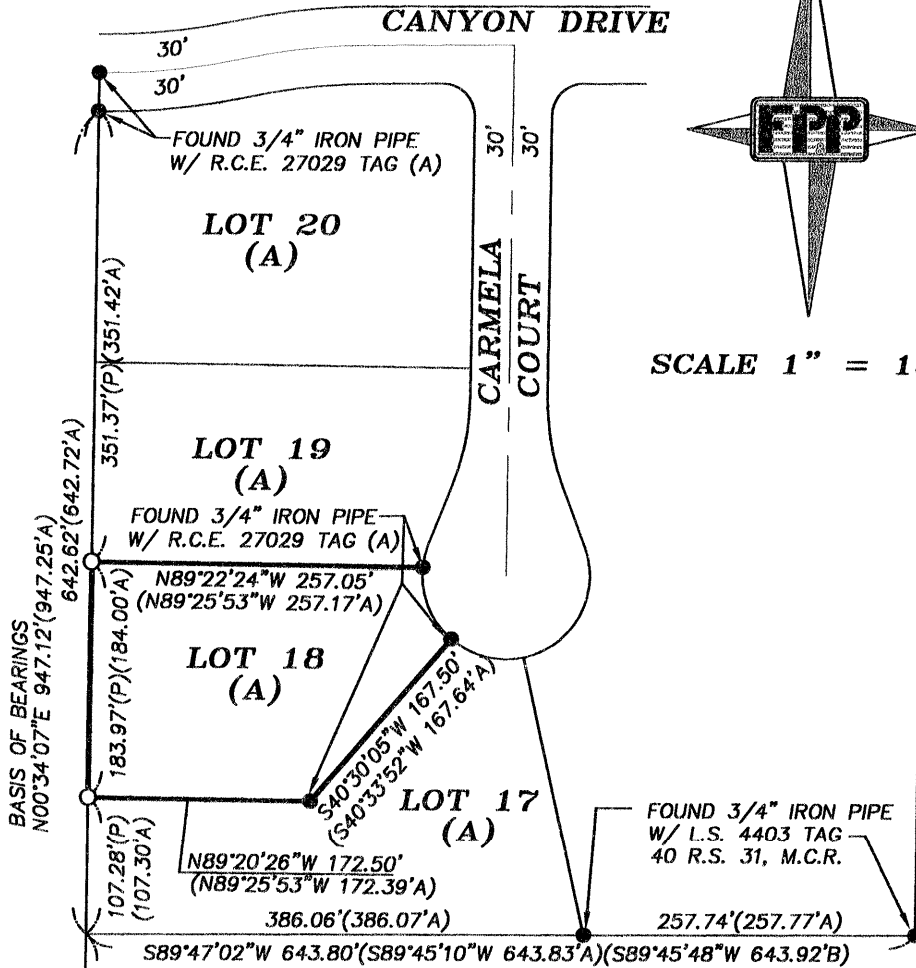
COUNTY SURVEYOR'S STATEMENT

This Corner Record was received August 22, 2005
and examined and filed August 26, 2005
Signed Steve [Signature] P.L.S or R.C.E. No. 4895
Title Dep. Co. Surveyor

County Surveyor's Comment _____



SCALE 1" = 150'



LEGEND

- MONUMENT FOUND AS SHOWN AND ACCEPTED.
- MONUMENT SET 3/4" I.D. IRON PIPE TAGGED WITH L.S. 7621.
- 264.11 ALL MEASUREMENTS ARE IN FEET AND DECIMAL FRACTIONS THEREOF.
- (A) REFERENCE DATA
- M. C. R. MERCED COUNTY RECORDS
- BOUNDARY LINE
- CR CALCULATED FROM RECORD
- (P) PRORATED

REFERENCES

- (A) MAP OF RANCHO CARMELA, RECORDED 39 O.P. 3, M.C.R.
- (B) PARCEL MAP FOR CARMEL COLLINS, RECORDED, 34 P.M. 15, M.C.R.

BASIS OF BEARING

THE BEARING OF N0°34'07"E ALONG THE WEST SIDE OF LOTS 17 - 20 (A), IS THE BASIS FOR ALL BEARINGS SHOWN ON THIS CORNER RECORD.

FOUND 5/8" BAR WITH L.S. 3586 TAG (B)

FARMLAND ROAD

PARCEL 1 (B)