

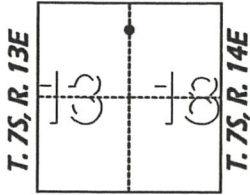
# CORNER RECORD

Agency Index 3619-A5, B5 & 3874-LL,MM  
Document Number \_\_\_\_\_

City of MERCED County of MERCED, California  
Brief Legal Description PARCELS B & C PER 75 P.M. 42, & LOTS 42 & 45 PER 45 O.P. 33

### CORNER TYPE

### COORDINATES (Optional)



- Government Corner
- Meander
- Rancho
- Control
- Property
- Other

Date of Survey August 17, 2018

N. \_\_\_\_\_ E. \_\_\_\_\_  
 Elevation \_\_\_\_\_  
 Units  Metric  U.S. Survey Foot  
 Horizontal Datum \_\_\_\_\_  
 Zone \_\_\_\_\_ Epoch Date \_\_\_\_\_  
 Vertical Datum \_\_\_\_\_  
 Complies with Public Resources Code §§8801-8819  
 Complies with Public Resources Code §§8890-8902

- PLS Act Ref.:  8765(d)  8771  8773  Other:
- Corner/Monument:  Left as found  Established  Rebuilt  Pre-Construction  
 Found and tagged  Reestablished  Referenced  Post-Construction

Narrative of corner identified and monument as found, set, reset, replaced, or removed:  
 See sheet #2 for description(s):

### SURVEYOR'S STATEMENT

This Corner Record was prepared by me or under my direction in conformance with  
 the Professional Land Surveyors' Act on September 26, 2018  
 Signed Duane J. Andrews P.L.S. or R.C.E. No. 4052

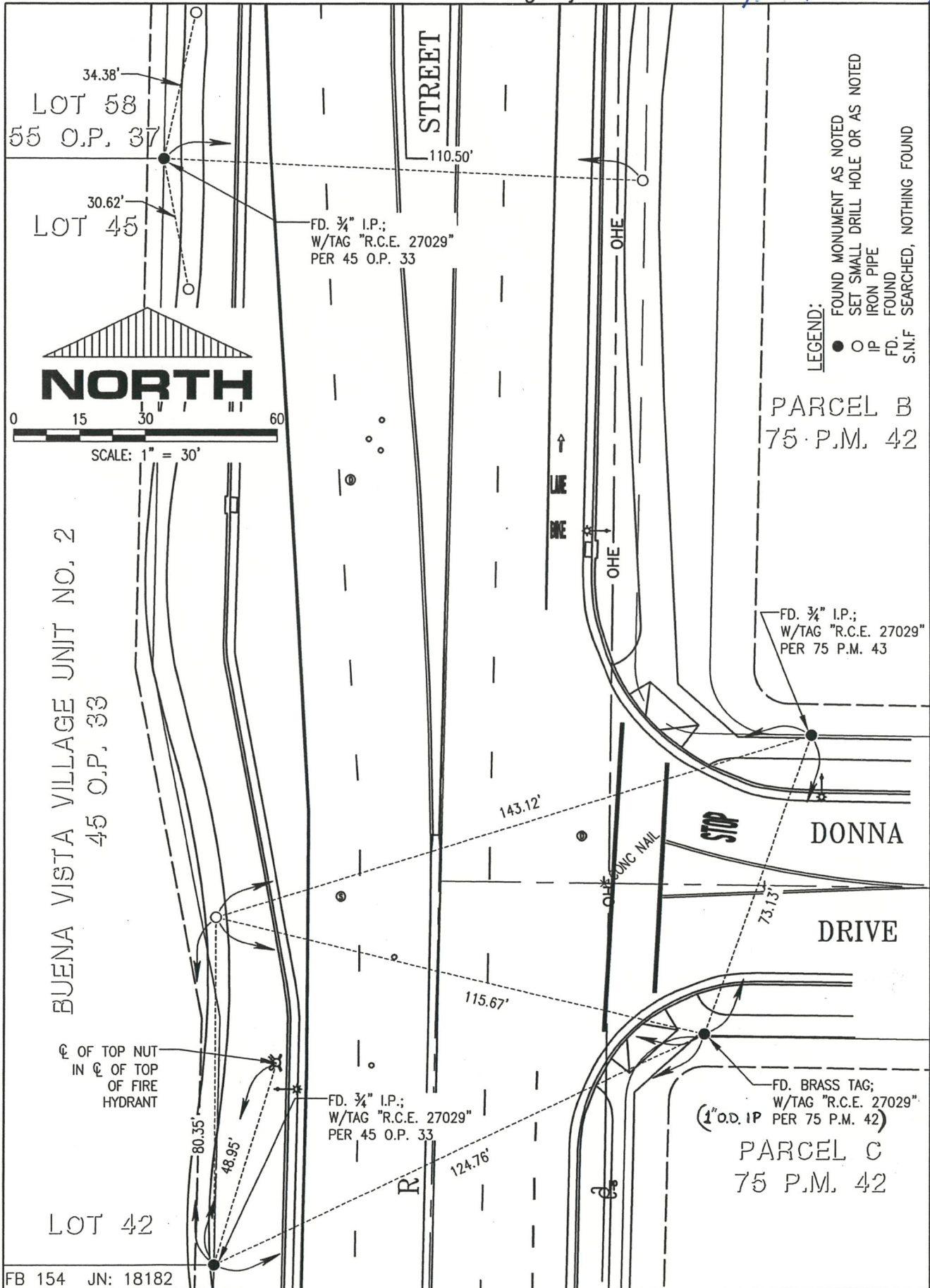


### COUNTY SURVEYOR'S STATEMENT

This Corner Record was received MARCH 7, 2019  
 and examined and filed MARCH 7, 2019  
 Signed Zachary T. Janz P.L.S. or R.C.E. No. 8664  
 Title COUNTY SURVEYOR



County Surveyor's Comment



**LEGEND:**  
 ● FOUND MONUMENT AS NOTED  
 ○ SET SMALL DRILL HOLE OR AS NOTED  
 ○ IP IRON PIPE FOUND  
 ○ FD. FOUND  
 ○ S.I.F. SEARCHED, NOTHING FOUND

PARCEL B  
 75 P.M. 42

FD. 3/4" I.P.;  
 W/TAG "R.C.E. 27029"  
 PER 75 P.M. 43

FD. BRASS TAG;  
 W/TAG "R.C.E. 27029"  
 (1" O.D. IP PER 75 P.M. 42)

PARCEL C  
 75 P.M. 42