

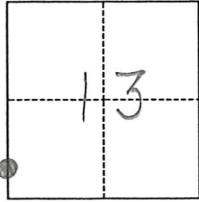
CORNER RECORD

Agency Index 3874-A
Document Number _____

City of Merced County of Merced, California
Brief Legal Description S.W. cor. Lot 90, Crocker Colony as shown in 46 PM 26

CORNER TYPE

COORDINATES (Optional)



T.7S, R.13E.

- Government Corner
- Meander
- Rancho
- Control
- Property
- Other

Date of Survey November 8, 2019

N. _____ E. _____
 Elevation _____
 Units Metric U.S. Survey Foot
 Horizontal Datum _____
 Zone _____ Epoch Date _____
 Vertical Datum _____
 Complies with Public Resources Code §§8801-8819
 Complies with Public Resources Code §§8890-8902

- PLS Act Ref.: 8765(d) 8771 8773 Other:
- Corner/Monument: Left as found Established Rebuilt Pre-Construction
 Found and tagged Reestablished Referenced Post-Construction

Narrative of corner identified and monument as found, set, reset, replaced, or removed:
 See sheet #2 for description(s):

Found per 51 RS 35, 2 1/2 in brass disk (significantly marred) unreadable. Set PK nails and 1 1/4 in brass washers (CALTRANS) on the northwest and northeast corners and on the westerly and easterly median island curbs.

SURVEYOR'S STATEMENT

This Corner Record was prepared by me or under my direction in conformance with
 the Professional Land Surveyors' Act on November 27, 2019
 Signed [Signature] P.L.S. or R.C.E. No. 7856

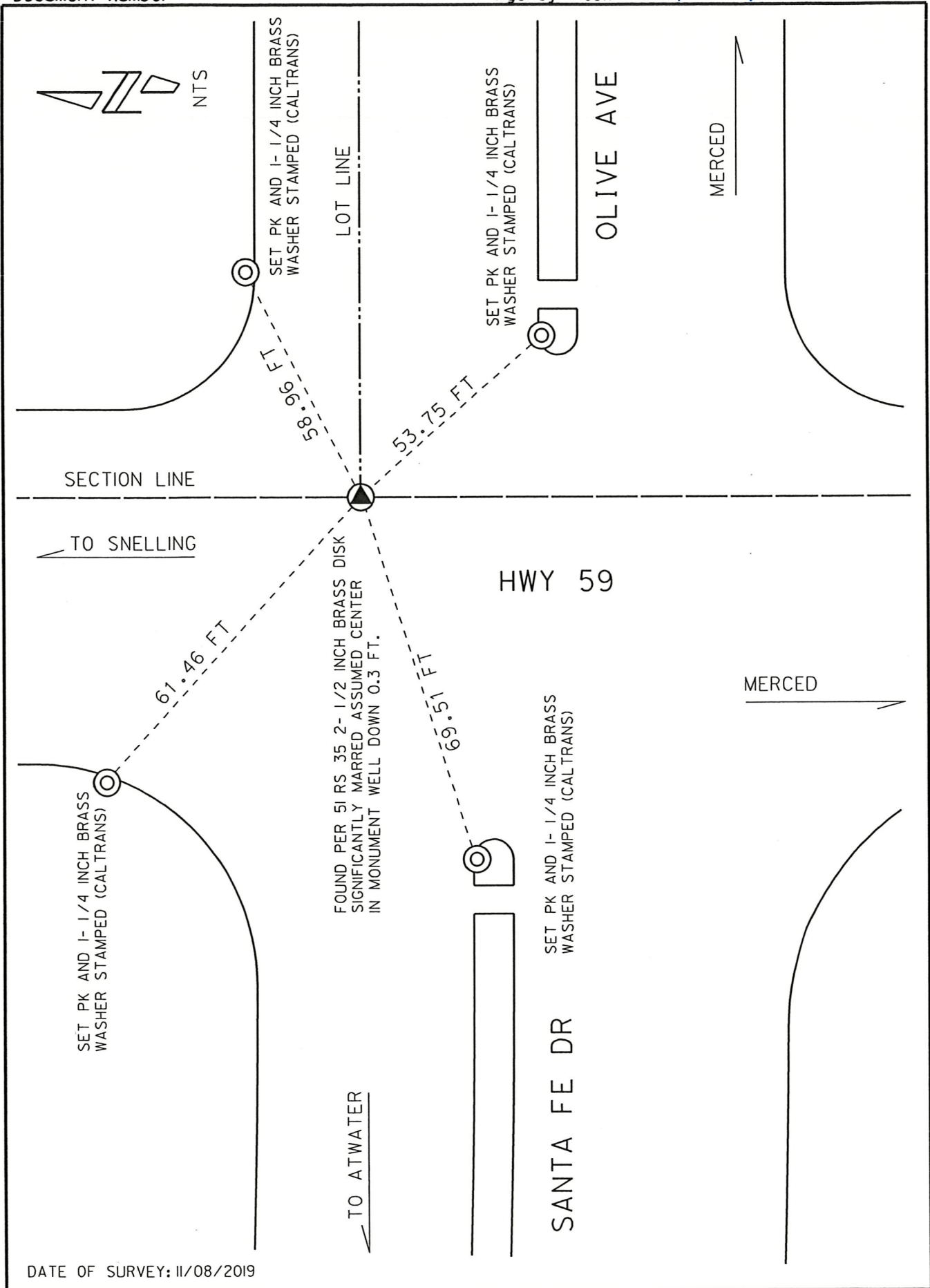


COUNTY SURVEYOR'S STATEMENT

This Corner Record was received DECEMBER 18, 2019
 and examined and filed JANUARY 7, 2020
 Signed Zach T. Janz P.L.S. or R.C.E. No. 8664
 Title COUNTY SURVEYOR



County Surveyor's Comment



DATE OF SURVEY: 11/08/2019