

CORNER RECORD

Document Number 3867

City of \_\_\_\_\_ County of MERCED, California

Brief Legal Description N.E. CORNER SECTION 16, T.6 S. R. 10E.



CORNER TYPE

COORDINATES (Optional)

Government Corner  Control   
Meander  Property   
Rancho  Other   
Date of Survey \_\_\_\_\_

N. \_\_\_\_\_  
E. \_\_\_\_\_  
Zone \_\_\_\_\_ Datum \_\_\_\_\_  
Elev. \_\_\_\_\_

Corner — Left as found  Found and tagged  Established  Reestablished  Rebuilt

Identification and type of corner found: Evidence used to identify or procedure used to establish or reestablish the corner:

Fd. 3/4" IRON ROD IN MONUMENT WELL SAID TO BE OVER 2" IRON PIPE SECTION CORNER IN COUNTY FIELD BOOK 703 PAGE 7

Point tied out prior to Paving effort by Merced County

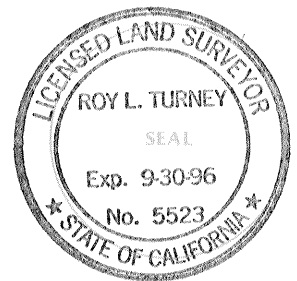
A description of the physical condition of the monument as found and as set or reset: THESE TIES ARE

FOR THE PURPOSE OF PERPETUATING THE MONUMENTATION. NO CLAIM IS MADE AS TO THE RELATIONSHIP OF THE POINTS OR LINES SHOWN HEREON TO THE TRUE BOUNDARY LOCATIONS.

SURVEYOR'S STATEMENT

This Corner Record was prepared by me or under my direction in conformance with the Land Surveyors' Act on SEPTEMBER 14 1995.

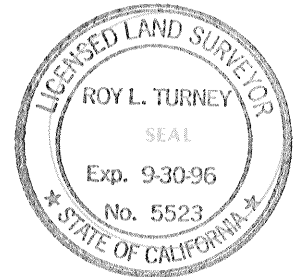
Signed Roy Turney L.S. or ~~RCE~~ Number 5523



COUNTY SURVEYOR'S STATEMENT

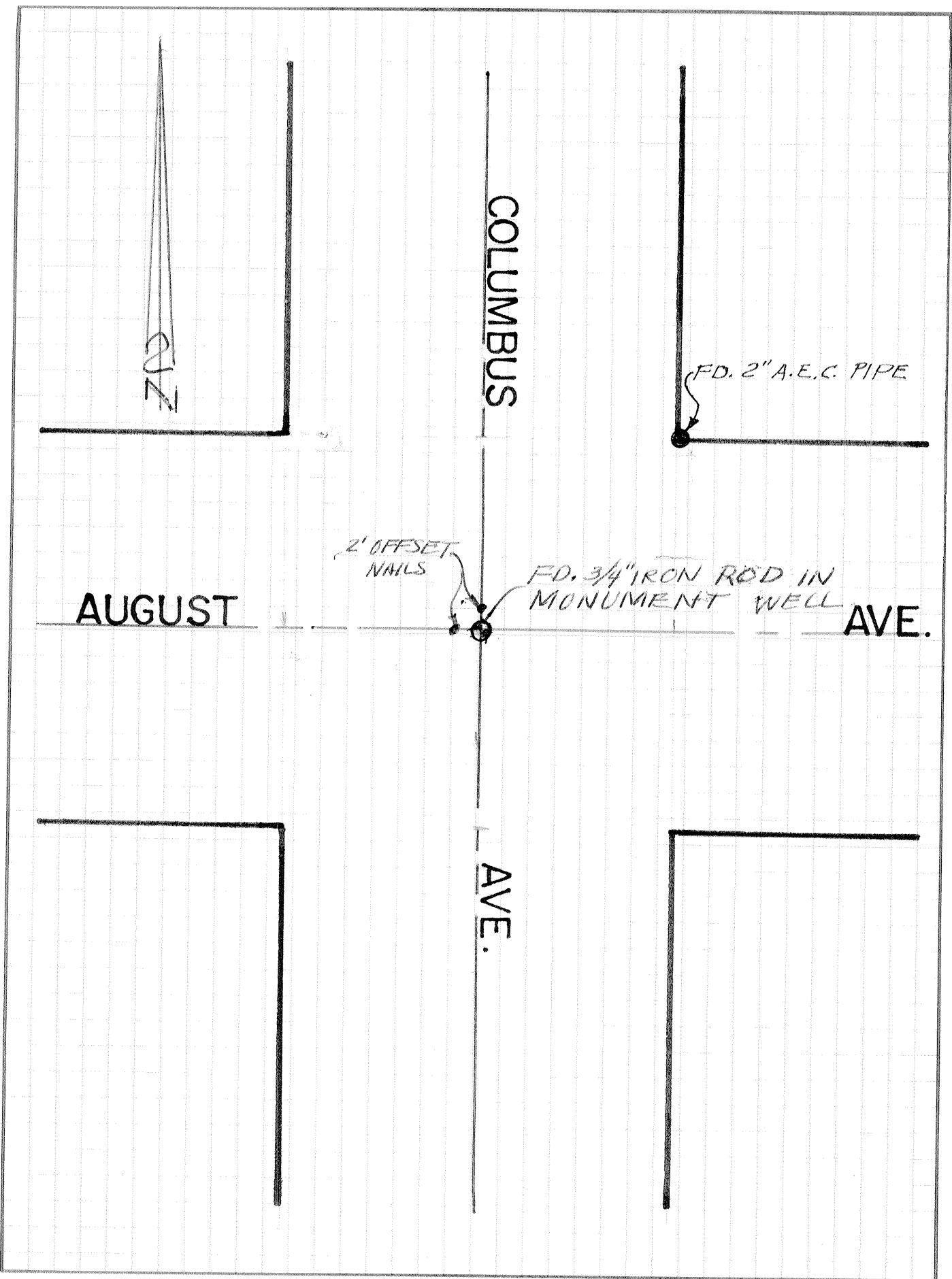
This Corner Record was received SEPTEMBER 1995 and examined and filed OCTOBER 16, 1995.

Signed Roy L. Turney Title DEP. CO. SURVEYOR



County Surveyor's Comment \_\_\_\_\_

\_\_\_\_\_  
\_\_\_\_\_  
\_\_\_\_\_



2 1/2

COLUMBUS

FD. 2" A.E.C. PIPE

AUGUST

2' OFFSET  
NAILS

FD. 3/4" IRON ROD IN  
MONUMENT WELL

AVE.

AVE.