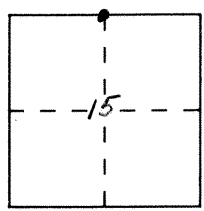


CORNER RECORD

Document Number 3852

City of _____ County of MERCED, California

Brief Legal Description North 1/4 COR. SEC. 15 T. 7. S; R. 14 E.



CORNER TYPE

Government Corner Control
 Meander Property
 Rancho Other
 Date of Survey 7-7-92

COORDINATES (Optional)

N. _____
 E. _____
 Zone _____ Datum _____
 Elev. _____

Corner — Left as found Found and tagged Established Reestablished Rebuilt

Identification and type of corner found: Evidence used to identify or procedure used to establish or reestablish the corner:

Ed. 4x4 Redwood 2x1'

BK 658 - PG 11

A description of the physical condition of the monument as found and as set or reset: 4x4 in Good Condition

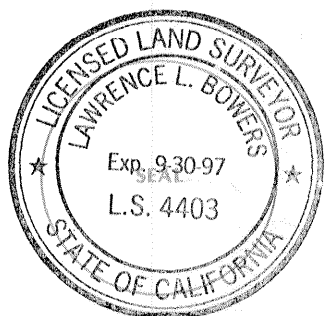
Note: This point was paved over. 8-31-93

SURVEYOR'S STATEMENT

This Corner Record was prepared by me or under my direction in conformance with

the Land Surveyors' Act on Sept. 7 1993.

Signed [Signature] L.S. of R.C.E. Number _____

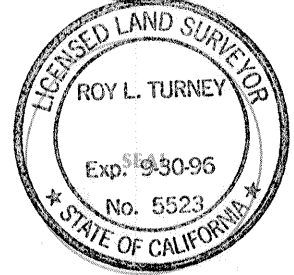


COUNTY SURVEYOR'S STATEMENT

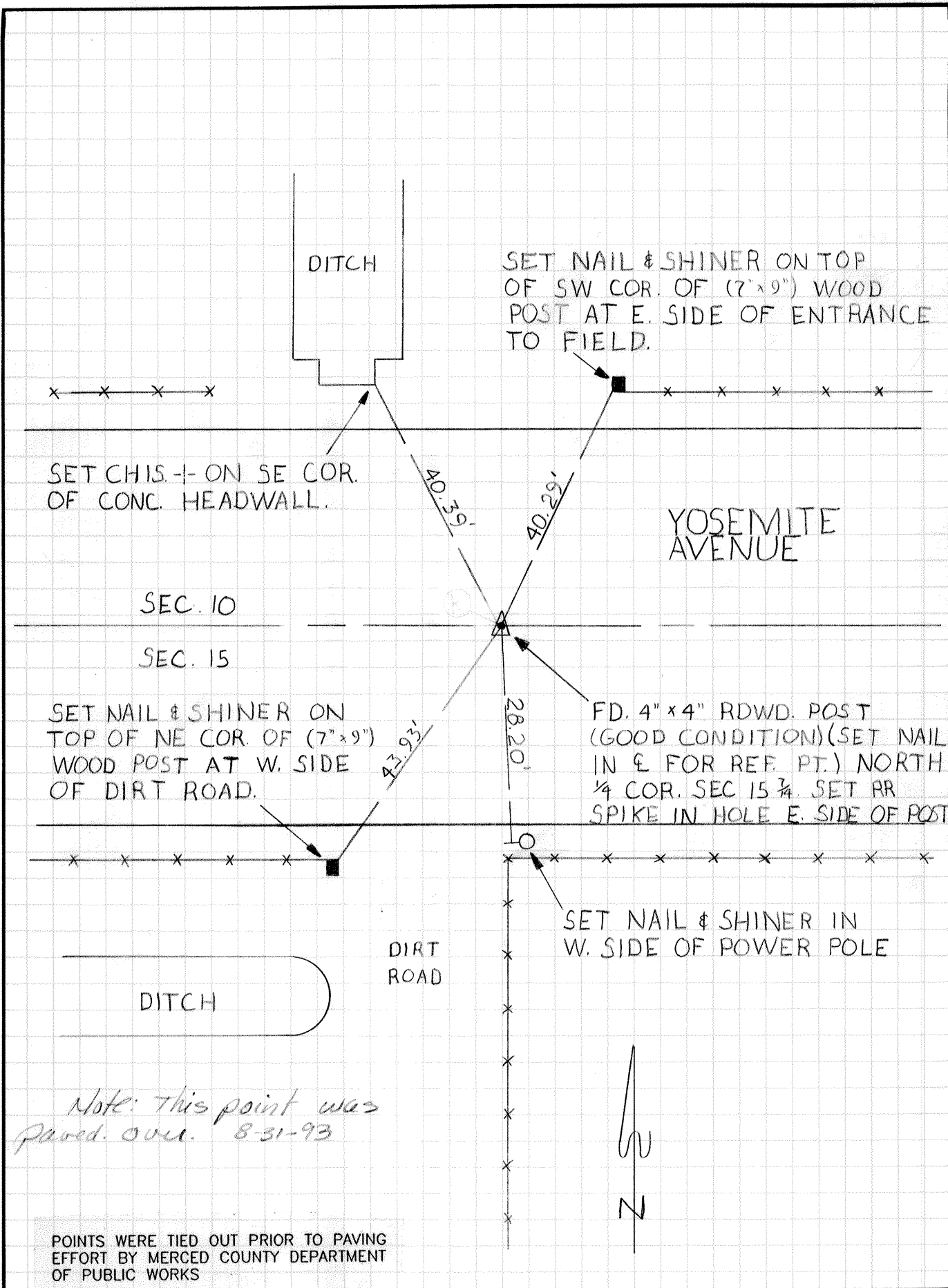
This Corner Record was received SEPT. 1993 and examined

and filed SEPT. 16, 1993.

Signed [Signature] Title DEP. CO. SUR.



County Surveyor's Comment _____



Note: This point was paved over. 8-31-93

POINTS WERE TIED OUT PRIOR TO PAVING EFFORT BY MERCED COUNTY DEPARTMENT OF PUBLIC WORKS