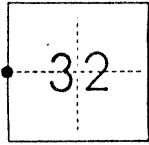


# CORNER RECORD

COUNTY OF Merced T. 11 S. R. 12 E. M.D.B. & \_\_\_\_\_ MERIDIAN CALIFORNIA

CORNER TYPE: GOV'T. CORNER  MEANDER  RANCHO  CONTROL  OTHER   
CORNER IDENTIFICATION — DATE OF VISIT October 14, 1985



West quarter corner of Section 32, 11/12

CORNER — LEFT AS FOUND  FOUND AND TAGGED  REESTABLISHED OBLITERATED CORNER  REBUILT

### PHYSICAL DESCRIPTION OF CORNER FOUND; EVIDENCE AND METHOD USED TO IDENTIFY OR REESTABLISH

3" x 3" redwood with scribing "31" west face, "32" east face, "1/4" north and south faces at surface.

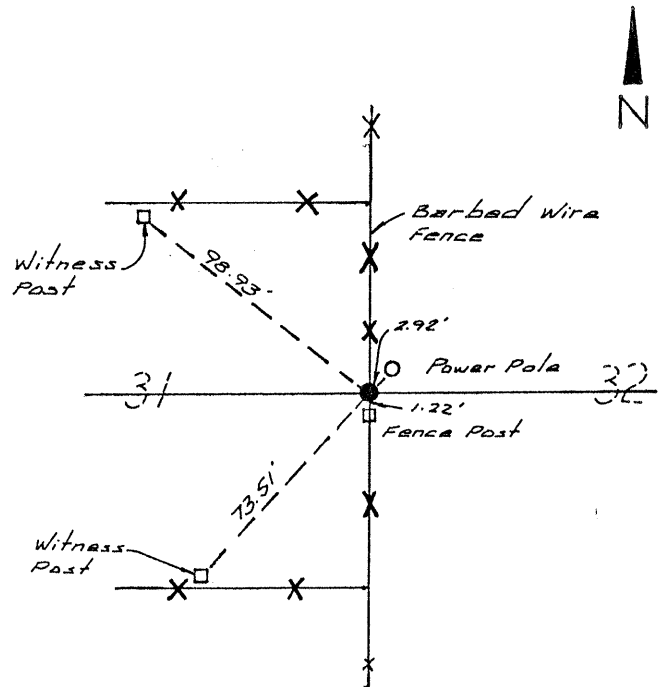
### PHYSICAL DESCRIPTION OF MONUMENTS REBUILT OR PERPETUATED

Set tag L.S. 5355

### SKETCH: (Include reference tie or witness points, remarks and topo of area)

#### Ties

- 2.92' Southwest of nail and shiner in Power pole.
- 1.22' North of centerline of fence post.
- 98.93' Southeast of USBR tag (Stamped 99.00) on 4" x 4" post scribed "R.P. 1/4".
- 73.51' Northeast of USBR tag (No stamp) on 4" x 4" post scribed "R.P.".



#### SURVEYOR'S CERTIFICATE

THIS CORNER RECORD WAS PREPARED BY ME OR UNDER MY DIRECTION IN CONFORMANCE WITH THE LAND SURVEYORS ACT ON November 26, 1985

SIGNED: Christy L. Smith L.S. 5355

L.S. or ~~R.C.S.~~ No.: 5355

#### COUNTY SURVEYOR'S CERTIFICATE

THE CORNER RECORD WAS RECEIVED \_\_\_\_\_ 19\_\_\_\_ AND EXAMINED AND FILED 12-9-1985

BY: Roy Turner  
TITLE: Dep. County Surveyor

DOCUMENT No. 3849

STATEMENT ON BACK OF SHEET

YES  NO