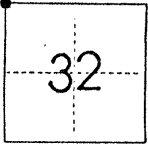


CORNER RECORD

COUNTY OF Merced T. 11 S. R. 12 E M.D.B. & MERIDIAN CALIFORNIA

CORNER TYPE: GOV'T. CORNER MEANDER RANCHO CONTROL OTHER

CORNER IDENTIFICATION — DATE OF VISIT October 14, 1985



Northwest corner of Section 32, 11/12

CORNER — LEFT AS FOUND FOUND AND TAGGED REESTABLISHED OBLITERATED CORNER REBUILT

PHYSICAL DESCRIPTION OF CORNER FOUND; EVIDENCE AND METHOD USED TO IDENTIFY OR REESTABLISH

1 1/2" O.D. iron pipe with wood plug, 1.7' below ground surface.

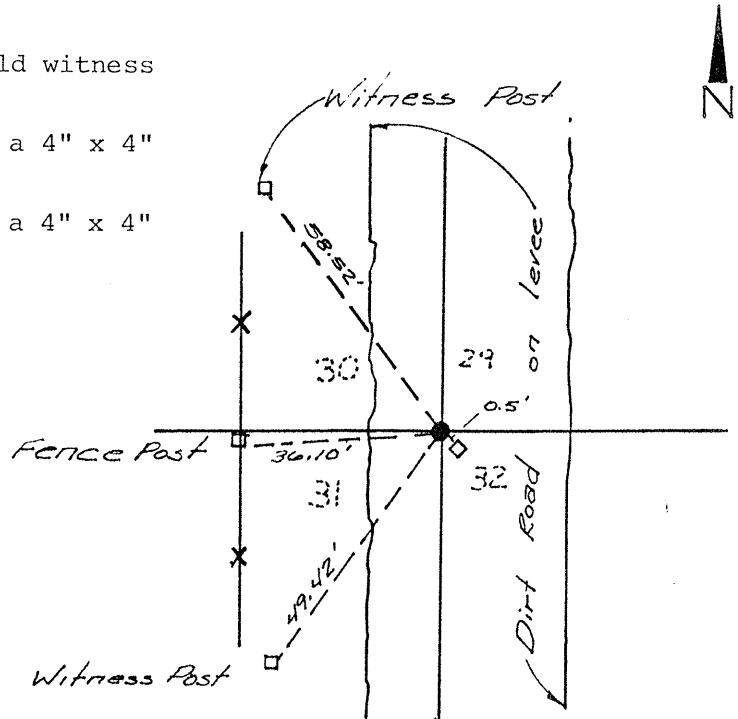
PHYSICAL DESCRIPTION OF MONUMENTS REBUILT OR PERPETUATED

Set tag L.S. 5355

SKETCH: (Include reference tie or witness points, remarks and topo of area)

Ties

- 0.5' Northwest of broken off 4" x 4" post (old witness post), also 1.7' deep.
- 58.52' Southeast of USBR tag (stamped 58.1) on a 4" x 4" post scribed "R.P.".
- 49.42' Northeast of USBR tag (stamped 49.5) on a 4" x 4" post scribed "R.P.".
- 36.10' East of nail and shiner in fence post.



SURVEYOR'S CERTIFICATE

THIS CORNER RECORD WAS PREPARED BY ME OR UNDER MY DIRECTION IN CONFORMANCE WITH THE LAND SURVEYORS ACT ON November 26 1985

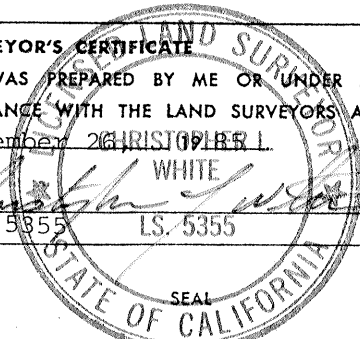
CHRISTOPHER L. WHITE

SIGNED

L.S. or R.C.E. No.:

5355

L.S. 5355



COUNTY SURVEYOR'S CERTIFICATE

THE CORNER RECORD WAS RECEIVED 12-9 1985 AND EXAMINED AND FILED

BY: Ray Turner

TITLE: Deputy Cal Surveyor

DOCUMENT No. 3847

STATEMENT ON BACK OF SHEET

YES NO