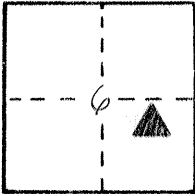


CORNER RECORD

COUNTY OF MERCED, CALIFORNIA

SECTION 6 TOWNSHIP 10 SOUTH RANGE 11 EAST M.D.B. & M.

BRIEF LEGAL DESCRIPTION: G.P.S. MONUMENT No. 1014 PER RECORD OF SURVEY
VOL. 28 PGS 9-12 FILED MAY 24, 1991 MERCED COUNTY RECORDS



CORNER TYPE: NAO 1983
COORDINATES

GOV'T CORNER CONTROL N. 4,855,665.945

MEANDER PROPERTY E. 6,473,255.685

RANCHO OTHER ZONE 3

DATE OF SURVEY: AUG. 13, 1993 ELEV. _____

CORNER - LEFT AS FOUND FOUND AND TAGGED REESTABLISHED REBUILT

PHYSICAL DESCRIPTION OF CORNER FOUND: EVIDENCE USED TO IDENTIFY THE CORNER FOUND
5/8" X 18" REBAR W/ALUM. CAP STAMPED "GPS/GIS No. 1014 RCE 15310
FLUSH

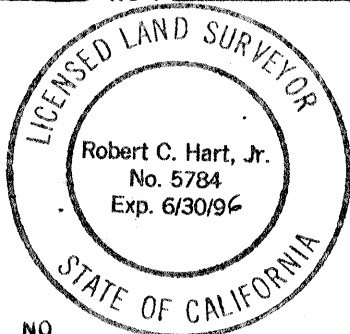
PHYSICAL DESCRIPTION OF MONUMENTS REBUILT, PERPETUATED, OR RESET RESET 5/8" REBAR
IN 1" X 28" I.P. DOWN 8" W/ "RESET 1993 P.L.S. 5784" STAMPED
ON ORIGINAL 12" CAP. SET MONUMENT WELL IN CONCRETE
OVER MONUMENT, FLUSH

SURVEYOR'S STATEMENT

THIS CORNER RECORD WAS PREPARED BY ME OR UNDER MY DIRECTION IN CONFORMANCE WITH THE LAND SURVEYORS ACT ON AUG. 20, 1993

SIGNED: Robert C. Hart Jr.

P. L.S. NO: 5784 EXPIRES 6-30-96



SEAL

YES NO SKETCH ON BACK OF SHEET

COUNTY SURVEYOR'S STATEMENT: _____

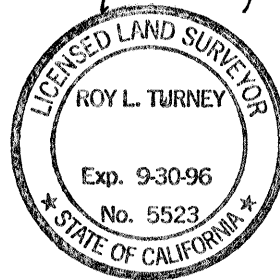
COUNTY SURVEYOR'S STATEMENT

THIS CORNER RECORD WAS RECEIVED 8-24-
1993

AND EXAMINED AND FILED 8-27- 1993

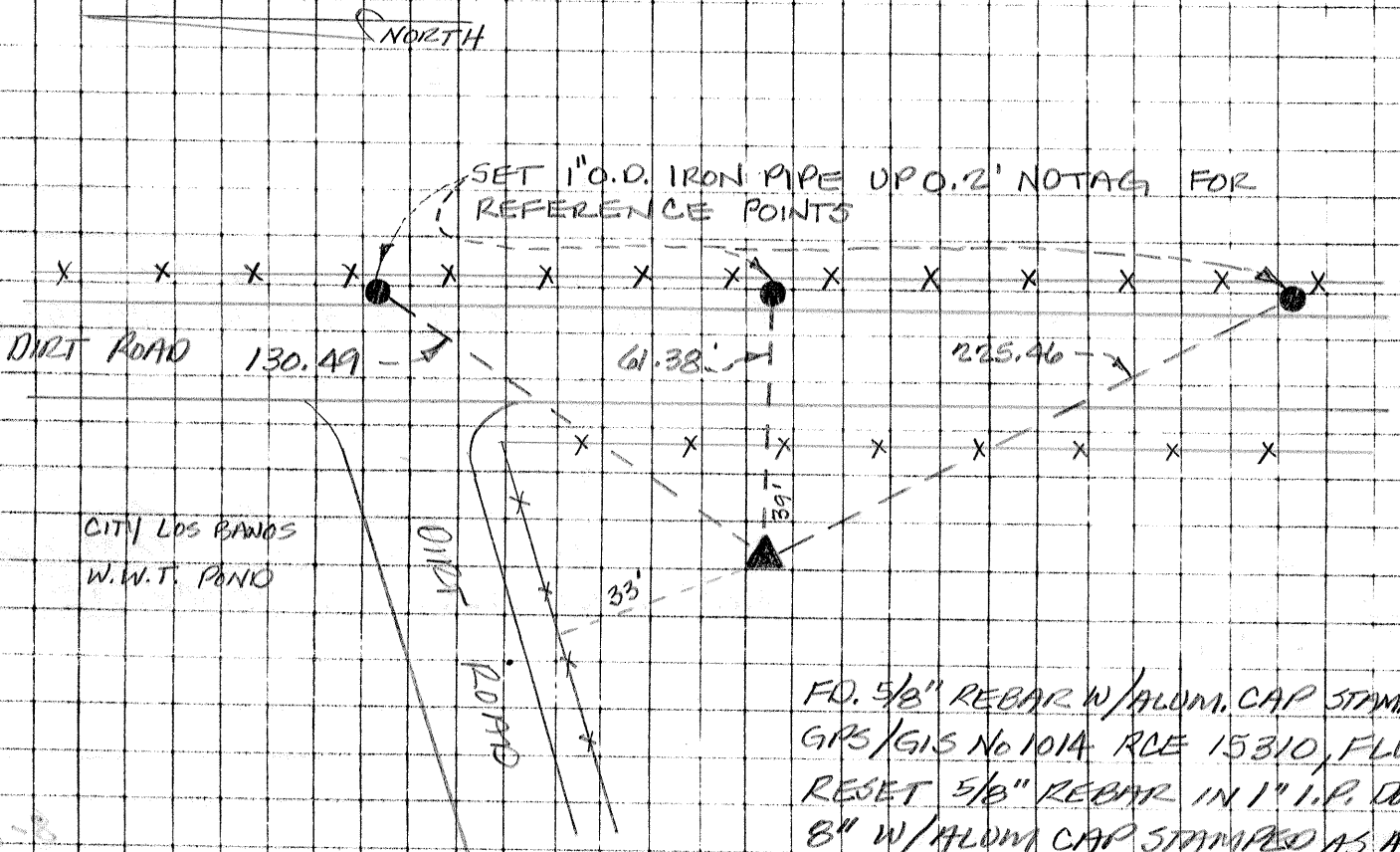
BY: Roy Turney

TITLE: Deputy County Surveyor



CORNER RECORD

SKETCH (Include reference tie or witness points, remarks and topo of area)



FD. 5/8" REBAR W/ALUM. CAP STAMPED
 GPS/GIS No 101A RCE 15310, FLUSH
 RESET 5/8" REBAR IN 1" I.P. DOWN
 8" W/ALUM. CAP STAMPED AS ABOVE
 W/ "RESET 1993 P.L. 5. 5784" IN
 MONUMENT WELL FLUSH

[Faint handwritten notes and scribbles]

2858 B