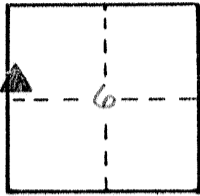


CORNER RECORD

COUNTY OF MERCED, CALIFORNIA

SECTION 6 TOWNSHIP 10 SOUTH RANGE 11 EAST M.D.B. & M.

BRIEF LEGAL DESCRIPTION: G.P.S MONUMENT No. 1013 PER RECORD OF SURVEY
VOL. 23 PGS. 9-12 FILED MAY 24, 1991 MERCED COUNTY RECORDS



CORNER TYPE:

- GOV'T CORNER CONTROL
 MEANDER PROPERTY
 RANCHO OTHER

NAD 1983
 COORDINATES
 N. 1,856,126.205
 E. 6,469,224.387
 ZONE 3

DATE OF SURVEY: _____ ELEV. _____

CORNER - LEFT AS FOUND FOUND AND TAGGED REESTABLISHED REBUILT

PHYSICAL DESCRIPTION OF CORNER FOUND: EVIDENCE USED TO IDENTIFY THE CORNER FOUND
5/8" x 18" REBAR W/ALUM. CAP STAMPED "GPS/GIS No. 1013 RCE 15310"
FLUSH

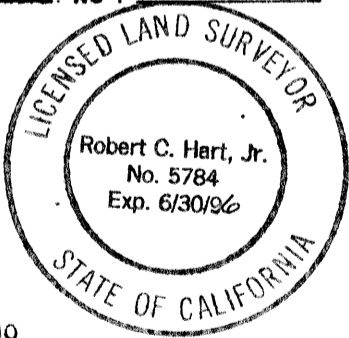
PHYSICAL DESCRIPTION OF MONUMENTS REBUILT, PERPETUATED, OR RESET RESET 5/8" REBAR
IN 1" x 28" I.P. DOWN 8" W/ "RESET 1993 P.L.S. 5784" STAMPED
ON ORIGINAL 2" CAP. SET MONUMENT WELL IN CONCRETE
OVER MONUMENT, FLUSH

SURVEYOR'S STATEMENT

THIS CORNER RECORD WAS PREPARED BY ME OR UNDER MY DIRECTION IN CONFORMANCE WITH THE LAND SURVEYORS ACT ON AUGUST 20, 1993

SIGNED: Robert C. Hart, Jr.

P.L.S. NO: 5784 EXPIRES 6-30-96



SEAL

YES NO SKETCH ON BACK OF SHEET

COUNTY SURVEYOR'S STATEMENT: _____

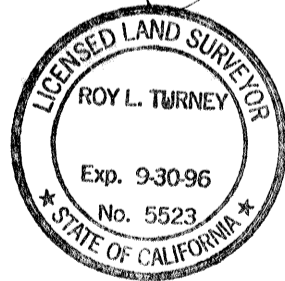
COUNTY SURVEYOR'S STATEMENT

THIS CORNER RECORD WAS RECEIVED 8-24-93 19 93

AND EXAMINED AND FILED 8-27 19 93

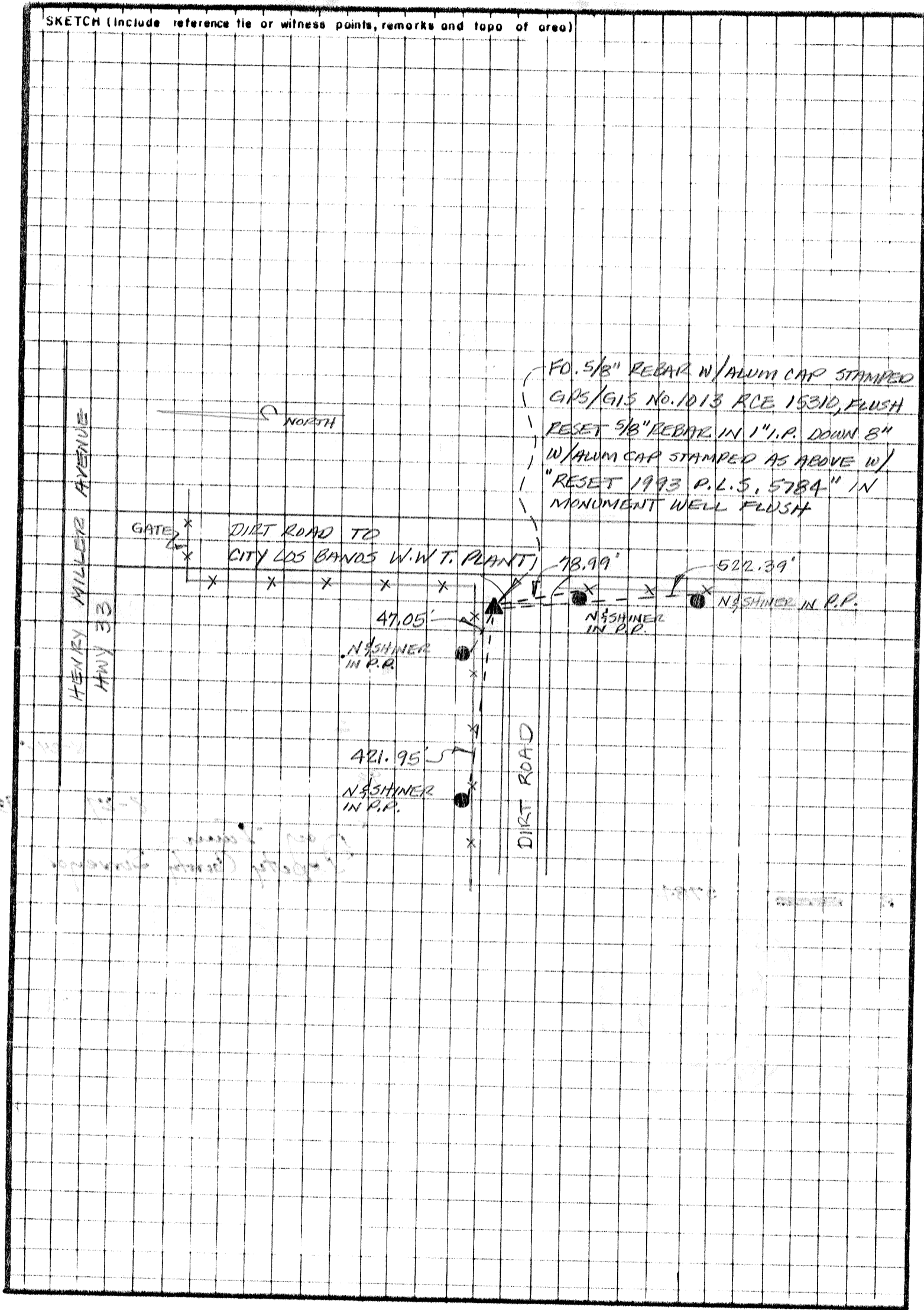
BY: Roy Turney

TITLE: Deputy County Surveyor



CORNER RECORD

SKETCH (include reference tie or witness points, remarks and topo of area)



FO. 5/8" REBAR W/ALUM CAP STAMPED
 GPS/GIS NO. 1013 RCE 15310, FLUSH
 RESET 5/8" REBAR IN 1" I.P. DOWN 8"
 W/ALUM CAP STAMPED AS ABOVE W/
 "RESET 1993 P.L.S. 5784" IN
 MONUMENT WELL FLUSH

HENRY MILLER AVENUE
 HWY 33

GATE
 DIRT ROAD TO
 CITY LOS BAMOS W.W.T. PLANT

47.05'
 NASHNER
 IN P.P.

421.95'
 NASHNER
 IN P.P.

78.99'
 NASHNER
 IN P.P.

522.39'
 NASHNER
 IN P.P.

DIRT ROAD

A 9582