

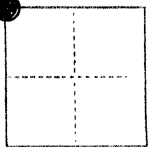
NO 2.97

COUNTY RECORD

COUNTY OF Merced T. 10 South R. 13 East M.D.B. & \_\_\_\_\_ MERIDIAN CALIFORNIA

CORNER TYPE: GOV'T. CORNER  MEANDER  RANCHO  CONTROL  OTHER

CORNER IDENTIFICATION — DATE OF VISIT February 19, 19 76



Northwest corner, Section 17, Township 10 South, Range 13 East

CORNER — LEFT AS FOUND  FOUND AND TAGGED  REESTABLISHED OBLITERATED CORNER  REBUILT

PHYSICAL DESCRIPTION OF CORNER FOUND; EVIDENCE AND METHOD USED TO IDENTIFY OR REESTABLISH

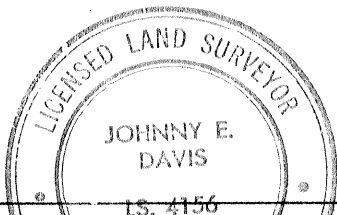
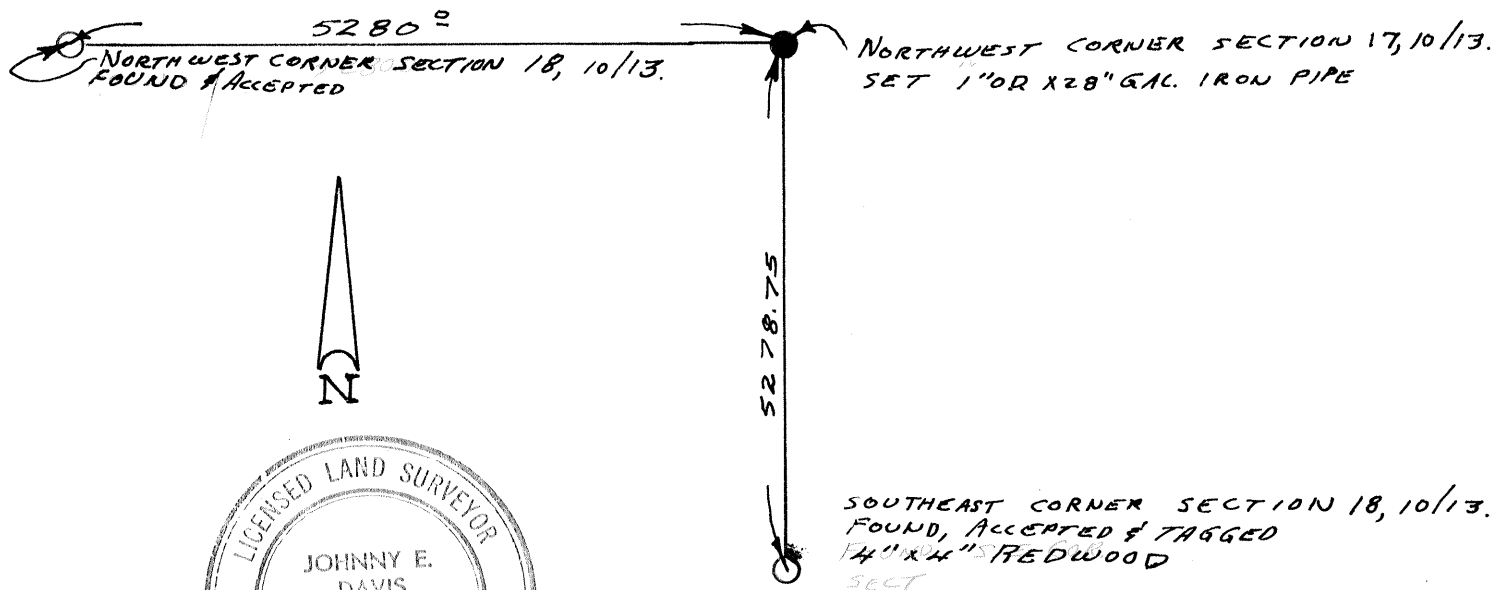
Record data found on Record of Survey filed in Book 8 of Surveys at Page 1, Merced County Records was used to reestablish this corner.

PHYSICAL DESCRIPTION OF MONUMENTS REBUILT OR PERPETUATED

Set a 1" O.D. x 28" galvanized iron pipe, tagged L.S. 4156, at 1.5 feet below groundline.

CALIFORNIA COORDINATE SYSTEM ORDER: FIRST  SECOND  THIRD   
STATIONS USED: NGS (USC & GS)  STATE  COUNTY  OTHER  STATION \_\_\_\_\_ STATION \_\_\_\_\_  
ZONE \_\_\_\_\_ ELEVATION \_\_\_\_\_ NORTHINGS (Y) \_\_\_\_\_ EASTINGS (X) \_\_\_\_\_

SKETCH: (Include reference tie or witness points, remarks and topo of area)



SURVEYOR'S CERTIFICATE

THIS CORNER RECORD WAS PREPARED BY ME OR UNDER MY DIRECTION IN CONFORMANCE WITH THE LAND SURVEYORS ACT ON April 26, 19 76.

SIGNED: Johnny E. Davis

L.S. or R.C.E. No.: L.S. 4156

COUNTY SURVEYOR'S CERTIFICATE

THE CORNER RECORD WAS RECEIVED \_\_\_\_\_ 19\_\_\_\_ AND EXAMINED AND FILED \_\_\_\_\_ 19\_\_\_\_.

BY: \_\_\_\_\_

TITLE: \_\_\_\_\_

DOCUMENT No. 3797

STATEMENT ON BACK OF SHEET YES  NO