

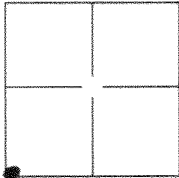
# CORNER RECORD

Document Number 3788

City of \_\_\_\_\_

County of Merced, California

Brief Legal Description Area near the southwest corner of Section 13, T9S, R10E, MDB&M



Section 13

### CORNER TYPE

Government Corner  Control   
 Meander  Property   
 Rancho  Other

Date of Survey March 29, 2012

### COORDINATES(Optional)

N. 1874721.99  
 E. 6464094.60  
 Zone 3 NAD27  NAD83   
 NAD83 Epoch 2002  
 Elev. \_\_\_\_\_  
 Vert. Datum: NGVD29  NADV88   
 Meas Units: Metric  Imperial

Corner - Left as found  Found and tagged  Established  Reestablished  Rebuilt

Identification and type of corner found: Evidence used to identify or procedure used to establish or reestablish the corner:  
 When searching for the southwest corner of Section 13, T9S, R10E, MDB&M, we found a 3/4" iron pin in the vicinity and not described in the record. This monument was measured using RTK GPS surveying methods. Bearings, Distances, And Coordinates For This Project Are Based On The North American Datum of 1983 converted to the California Coordinate System Of 1983 (Nad83), Zone 3, US Survey Feet Units, 2002 Epoch Date Adjustment. All Distances And Coordinates Are Grid; A Combined Scale Factor of 1.001564 should be utilized to convert grid distances to ground distances.

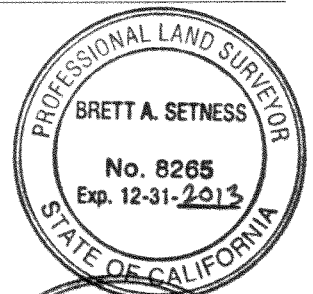
A description of the physical condition of the monument as found and as set or reset: 3/4" iron pin with yellow plastic cap stamped "LS 4156" in good physical shape from our quick visual inspection. The monument is located in a marsh area surrounded by mud and water under a north-south running pole line. Being approximately 15' westerly of the centerline of an existing raised road with marshlands on both sides. Approximately 2250' northwesterly along a dirt road from Mercy-Springs Road

### SURVEYOR'S STATEMENT

This Corner Record was prepared by me or under my direction in conformance with

the Land Surveyor's Act on October 10, 2012.

Signed Brett A. Setness P.L.S. or ~~R.C.E.~~ No.: 8265



### COUNTY SURVEYOR'S STATEMENT

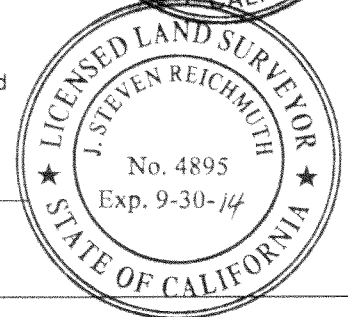
This Corner Record was received October 11, 2012 and examined

and filed October 12, 2012.

Signed J. Steven Reichmuth P.L.S. or ~~R.C.E.~~ No.: 4895

Title Acting County Surveyor

County Surveyor's Comment \_\_\_\_\_



BEING A PORTION OF SECTION 13  
TOWNSHIP 9 SOUTH,  
RANGE 10 EAST,  
MOUNT DIABLO BASE AND  
MERIDIAN,  
MERCED COUNTY, CALIFORNIA



APN: 070-250-017  
STANDARD DUCK CLUB LLC

APN: 070-250-018  
WHEEL-BERRY LLC

POINT 41006  
N-1874721.99  
E-6464094.60  
FOUND 3/4" IRON PIN WITH  
YELLOW PLASTIC CAP  
STAMPED "LS 4156"

APN: 070-150-027  
WHEEL-BERRY LLC

POINT 3001  
N-1877209.69  
E-6466781.18  
FOUND CFLHD 2.5"  
ALUMINUM CAP

APN: 070-150-023  
UNITED STATES OF  
AMERICA  
BUREAU OF  
RECLAMATION  
PARCEL M-9 PER  
1787 O.R. 227, M.C.R.

POINT 3000  
N-1876167.42  
E-6467309.52  
FOUND CFLHD 2.5"  
ALUMINUM CAP

APN: 070-150-012  
STATE OF CALIFORNIA  
FISH & GAME  
WILDLIFE

SAN LUIS  
CANAL

APN:  
070-150-043  
STATE OF  
CALIFORNIA  
FISH & GAME  
WILDLIFE

SAN LUIS DRAIN

WOLFSEN ROAD  
SAN LUIS CANAL  
SAN LUIS DRAIN

165

165

**FEDERAL HIGHWAY ADMINISTRATION (FHWA)**  
**CENTRAL FEDERAL LANDS**  
**HIGHWAY DIVISION PROJECT (CFLHD)**  
**CA RRP SALU 11(1)**

BEARINGS, DISTANCES, AND COORDINATES FOR THIS PROJECT ARE BASED ON THE NORTH AMERICAN DATUM OF 1983 CONVERTED TO THE CALIFORNIA COORDINATE SYSTEM OF 1983 (NAD83), ZONE 3, US SURVEY FEET UNITS, 2002 EPOCH DATE ADJUSTMENT. ALL DISTANCES AND COORDINATES ARE GRID; A COMBINED SCALE FACTOR OF 1.00001564 SHOULD BE UTILIZED TO CONVERT GRID DISTANCES TO GROUND DISTANCES.

FILE: SPEC: P:\2183\_San\_Luis\_NWR\_Entrance\_Road\0010\_Preliminary\_ROW\04\_Survey\300\_Boundary\Entrance\_Plan\Cattrans\Corner\_Record.dwg  
PLOT DATE: Oct 10, 2012 - 10:40am

**K** KJELSDEN  
**S** SINNOCK  
**N** NEUDECK  
INC. Civil Engineers  
and Land Surveyors

711 N. Pershing Avenue  
Stockton, CA 95203-2152  
Office: (209) 946-0268  
Faxes: (209) 946-0296  
E-mail: KSN@ksninc.com

ENTRANCE ROAD  
SAN LUIS NATIONAL REFUGE  
WOLFSEN ROAD/HWY 165  
CORNER RECORD

Design  
BAS  
Drawn  
BAS  
Check  
KFN

Scale  
1"=500'  
Original Drawing Scale  
0 1/4" 1/2"

Date  
SEPTEMBER 2012  
Sheet Number  
1 Of 1  
Project File No.  
2183-0010