

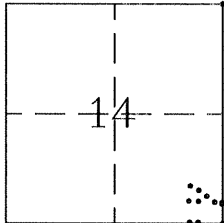
# CORNER RECORD

Document Number 3776 H, I, J, K, L

City of UNINCORPORATED

County of MERCED, California

Brief Legal Description PORTION OF SECTION 14, T. 10 S., R. 11 E. M.D.B. & M. AS SHOWN BY 26 RS 43, MERCED COUNTY RECORDS



### CORNER TYPE

Government Corner  Control   
 Meander  Property   
 Rancho  Other   
 Date of Survey MARCH 13, 2003

### COORDINATES (Optional)

N. \_\_\_\_\_  
 E. \_\_\_\_\_  
 Zone \_\_\_\_\_ NAD27  NAD83   
 NAD83 Epoch \_\_\_\_\_  
 Elev. \_\_\_\_\_  
 Vert. Datum: NGVD29  NAVD88   
 Meas. Units: Metric  Imperial

Corner - Left as found  Found and tagged  Established  Reestablished  Rebuilt

Identification and type of corner found: Evidence used to identify or procedure used to establish or reestablish the corner: FOUND MONUMENTS AS SHOWN ON REVERSE. ESTABLISHED MONUMENTS FOR PROPERTY CORNERS SHOWN BY "RECORD OF SURVEY FOR GERME TROTTER" 26 R.S. 43 MERCED COUNTY RECORDS

A description of the physical condition of the monument as found and as set or reset: AS SHOWN BY SKETCH ON REVERSE

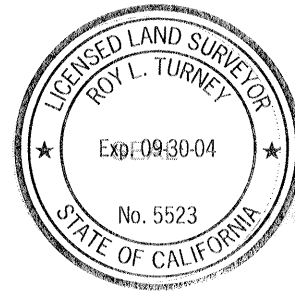
### SURVEYOR'S STATEMENT

This Corner Record was prepared by me or under my direction in conformance with the Land Surveyor's Act on MARCH 17, 2003  
 Signed Robert C. Hart P.L.S. No. 5784



### COUNTY SURVEYOR'S STATEMENT

This Corner Record was received APRIL 1, 2003  
 and examined and filed APRIL 12, 2003  
 Signed Roy L. Turney P.L.S. or R.C.E. No. 5523  
 Title Dep. Co. Sur.

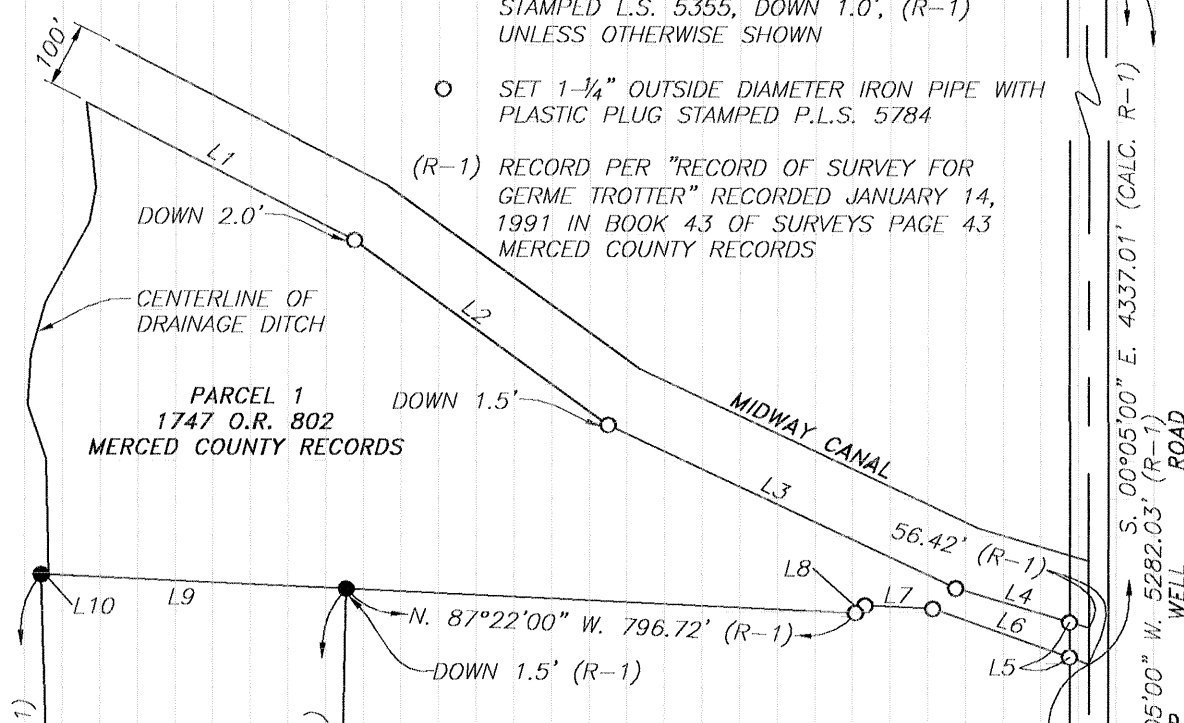


County Surveyor's Comment \_\_\_\_\_

FOUND 1-1/2" IRON PIPE WITH UNREADABLE TAG IN MONUMENT WELL (R-1)

**LEGEND**

- FOUND 1" IRON PIPE WITH PLASTIC PLUG STAMPED L.S. 5355, DOWN 1.0', (R-1) UNLESS OTHERWISE SHOWN
- SET 1-1/4" OUTSIDE DIAMETER IRON PIPE WITH PLASTIC PLUG STAMPED P.L.S. 5784
- (R-1) RECORD PER "RECORD OF SURVEY FOR GERME TROTTER" RECORDED JANUARY 14, 1991 IN BOOK 43 OF SURVEYS PAGE 43 MERCED COUNTY RECORDS



PARCEL 1  
1747 O.R. 802  
MERCED COUNTY RECORDS

NUMBER	DIRECTION	DISTANCE
L1	S. 62°50'30" E.	470.20' (R-1)
L2	S. 54°03'30" E.	490.00' (R-1)
L3	S. 65°00'00" E.	600.00' (R-1)
L4	S. 73°24'30" E.	217.00' (R-1)
L5	S. 00°05'00" E.	54.75' (M)
L6	N. 70°32'00" W.	258.83' (R-1)
L7	N. 87°13'30" W.	105.87' (R-1)
L8	S. 51°47'19" W.	18.70' (R-1)
L9	N. 87°22'00" W.	477.10' (R-1)
L10	N. 87°22'00" W.	12.00' (R-1)
L11	S. 88°49'51" E.	423.16' (R-1)
L12	S. 00°04'08" E.	123.91' (R-1)

SOUTHWEST CORNER OF SECTION 14,  
T. 10 S., R. 11 E. M.B.D. & M.

