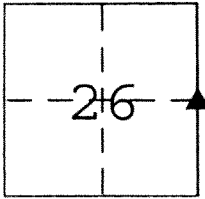


**CORNER RECORD**

Document Number 3746

City of \_\_\_\_\_ County of Merced, California

Brief Legal Description E 1/4 Sec. 26, T.9 S., R. 10 E., M.D.M. & B.



**CORNER TYPE**

Government Corner  Control   
Meander  Property   
Rancho  Other   
Date of Survey 02-08-2013

**COORDINATES (Optional)**

N. \_\_\_\_\_  
E. \_\_\_\_\_  
Zone \_\_\_\_\_ NAD27  NAD83   
NAD83 Epoch \_\_\_\_\_  
Elev. \_\_\_\_\_  
Vert. Datum: NGVD29  NAVD88   
Meas. Units: Metric  Imperial

Corner - Left as found  Found and tagged  Established  Reestablished  Rebuilt

Identification and type of corner found: Evidence used to identify or procedure used to establish or reestablish the corner:

Found 2 1/2" Brass Disk set in 1" Iron Pipe down 0.95' in monument well

Monument is stamped: Department of Interior U.S. Bureau of Reclamation

S26:S25 1965 per R.S. vol. 7 page 49.

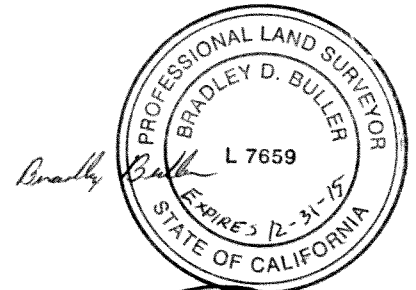
A description of the physical condition of the monument as found and as set or reset: Monument was found in good condition.

**SURVEYOR'S STATEMENT**

This Corner Record was prepared by me or under my direction in conformance with

the Land Surveyor's Act on MARCH 21 2013

Signed Bradley D. Buller P.L.S or R.C.E. No. L 7659



**COUNTY SURVEYOR'S STATEMENT**

This Corner Record was received March 21, 2013

and examined and filed April 29, 2013

Signed J. Steven Reichmuth P.L.S or R.C.E. No. 4895

Title Acting County Surveyor

County Surveyor's Comment \_\_\_\_\_



E. 1/4 COR. OF SEC. 26, T. 9 S., R. 10 E.



SET PK & BRASS "CALTRANS"  
WASHER IN SOUTH SIDE OF  
POWER POLE #19/1 ALSO #23023



43.34'

FND 2 1/2" BRASS DISK IN 1" IP  
IN MON. WELL DN 0.95'  
STAMPED  
"DEPT OF INTERIOR U.S. BUREAU  
OF RECLAMATION S26:S25 1965"

59.43'



SET 3/4" REBAR W/ PUNCH MARK  
SET ORANGE CARSONITE

SR-165

SET PK W/ BRASS  
"CALTRANS" WASHER  
IN NORTH SIDE OF TELE POLE

29.64'



72.51'



FND NAIL IN TOP OF 4x4  
REDWOOD FENCE POST