

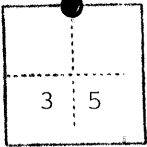
A 374

CORNER RECORD

COUNTY OF Merced T. 9 South R. 10 East Mt. Diablo MERIDIAN CALIFORNIA

CORNER TYPE: GOV'T. CORNER MEANDER RANCHO CONTROL OTHER

CORNER IDENTIFICATION — DATE OF VISIT January 19 79



North 1/4 Corner, Section 35

CORNER — LEFT AS FOUND FOUND AND TAGGED REESTABLISHED OBLITERATED CORNER REBUILT

PHYSICAL DESCRIPTION OF CORNER FOUND; EVIDENCE AND METHOD USED TO IDENTIFY OR REESTABLISH

Found badly decayed 2" O.D. iron pipe @ groundline

PHYSICAL DESCRIPTION OF MONUMENTS REBUILT OR PERPETUATED

Replaced with 1" O.D. x 28" galvanized iron pipe tagged L.S. 4156 @ groundline.

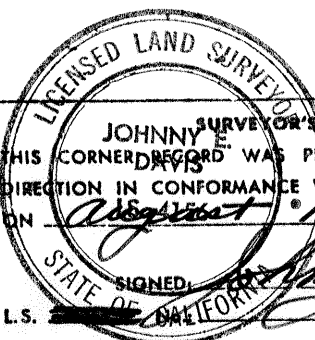
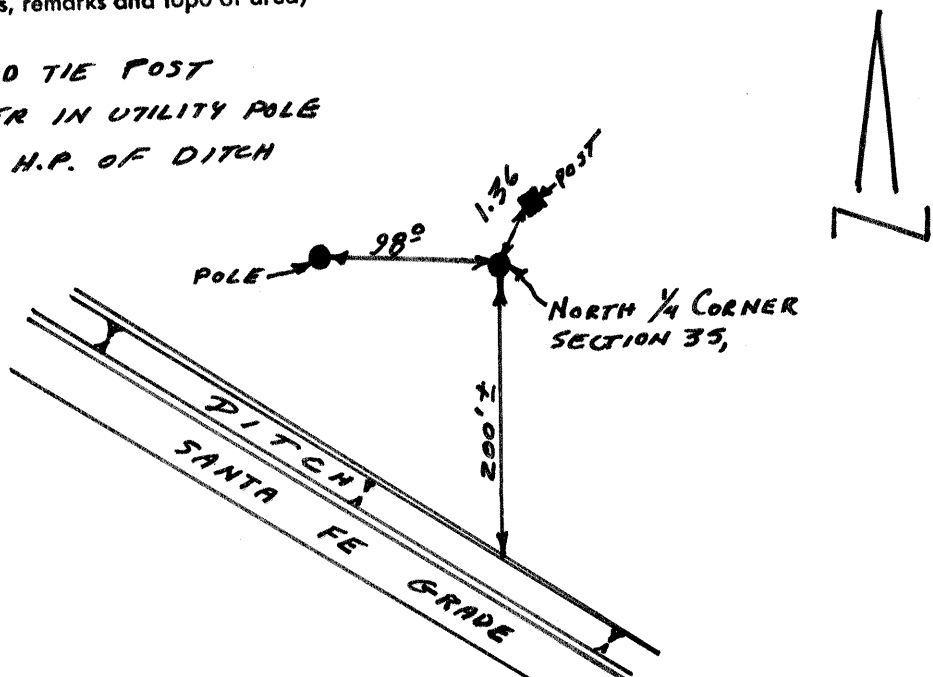
CALIFORNIA COORDINATE SYSTEM ORDER: FIRST SECOND THIRD

STATIONS USED: NGS (USC & GS) STATE COUNTY OTHER STATION _____ EASTINGS (X) _____

ZONE _____ ELEVATION _____ NORTHINGS (Y) _____

SKETCH: (Include reference tie or witness points, remarks and topo of area)

1.36 Southwest of RAILROAD TIE POST
 98° EAST OF NAIL SHINER IN UTILITY POLE
 200'± NORTH OF NORTHERLY H.P. OF DITCH



SURVEYOR'S CERTIFICATE
 THIS CORNER RECORD WAS PREPARED BY ME OR UNDER MY DIRECTION IN CONFORMANCE WITH THE LAND SURVEYORS ACT ON August 19 19 79
 SIGNED: Johnny E. Davis
 L.S. 4156

COUNTY SURVEYOR'S CERTIFICATE
 THE CORNER RECORD WAS RECEIVED _____ 19____
 AND EXAMINED AND FILED _____ 19____
 BY: _____
 TITLE: _____
 DOCUMENT No. 3744
 STATEMENT ON BACK OF SHEET YES NO

SEAL