

CORNER RECORD

Document Number 3730 664

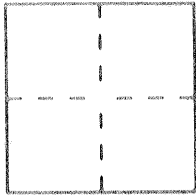
City of Los Banos

County of Merced, California

Brief Legal Description Intersection of Centerline of H St. and N. line of Pacheco Blvd.

Section 14 T.10 S. R10E. MDM
CORNER TYPE

COORDINATES
(Optional)



Government Corner Control
Meander Property
Rancho Other
Date of Survey 3-23-93

N. 203003.3
E. 1901399.1
Zone 3 Datum 27
Elev. _____

Corner — Left as found Found and tagged Established Reestablished Rebuilt

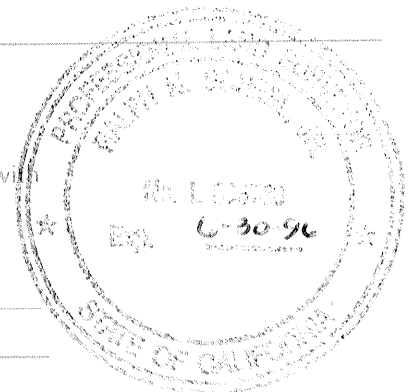
Identification and type of corner found: Evidence used to identify or procedure used to establish or reestablish the corner: Found 1/4" iron pipe per 8 M 47 Merced Co. Records

A description of the physical condition of the monument as found and as set or reset: Appears in good condition—may be covered or destroyed by construction.

SURVEYOR'S STATEMENT

This Corner Record was prepared by me or under my direction in conformance with the Land Surveyors' Act on 3-23 19 93

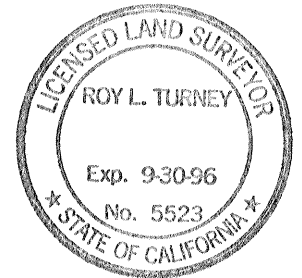
Signed Raph Schul L.S. or ~~REC~~ Number 3730
PARTY CHIEF, CALTRANS License Expiration Date _____



COUNTY SURVEYOR'S STATEMENT

This Corner Record was received 2-23 19 94 and examined and filed 2-25- 19 94.

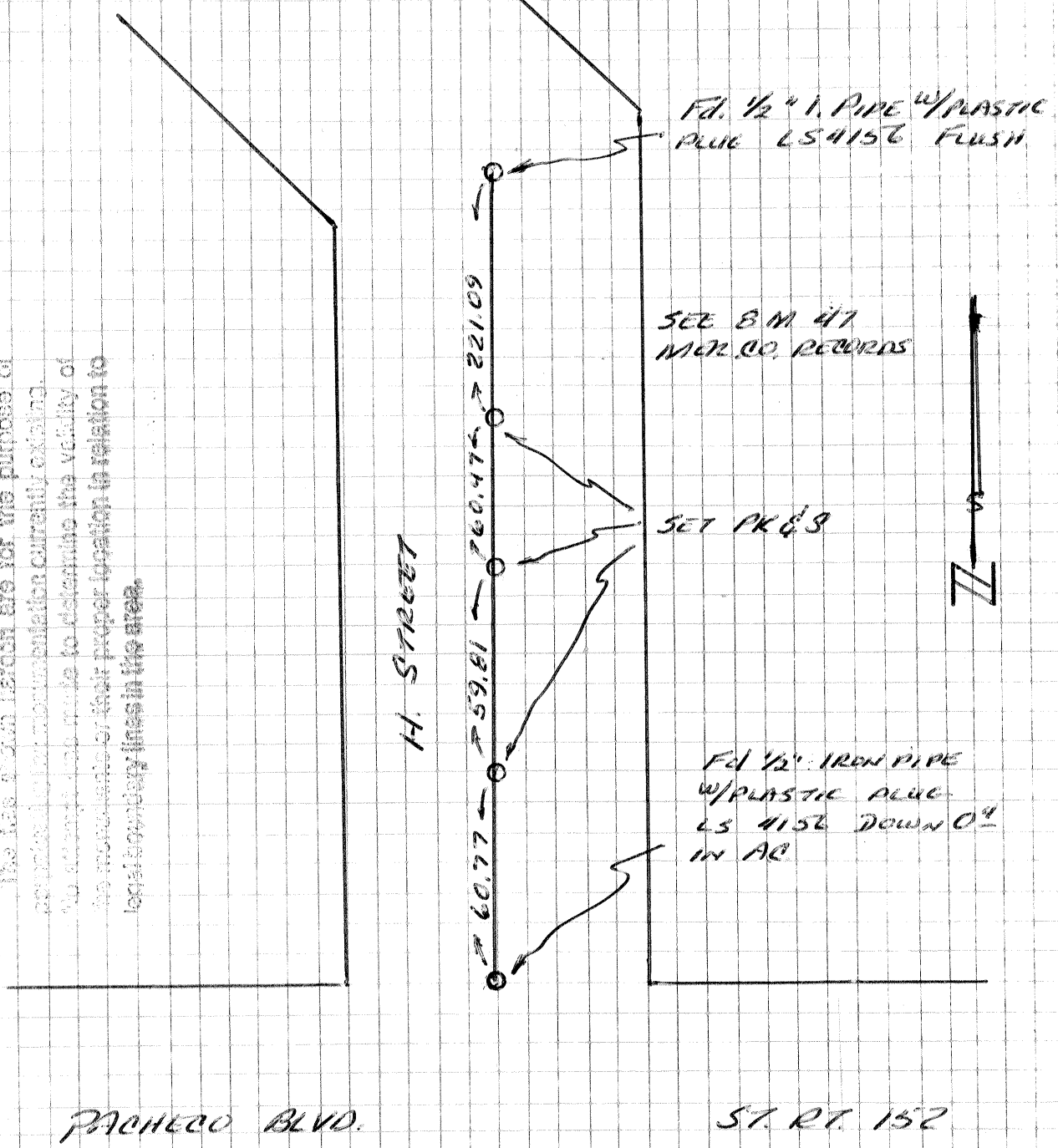
Signed Roy Turney Title Dep. Co. Sur.



County Surveyor's Comment _____

SECT 14
TIOSSICOE MDM

The gas station markers are for the purpose of
 establishing monumentation currently existing.
 No attempt has been made to determine the validity of
 the monuments or their proper location in relation to
 local boundary lines in the area.

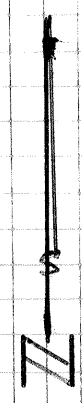


Fd. 1/2" I. PIPE W/PLASTIC
 PLUG LS 4156 FLUSH

SEE B.M. 47
 MAR. CO. RECORDS

SET PK 63

Fd 1/2" IRON PIPE
 W/PLASTIC PLUG
 LS 4156 DOWN 04
 IN AC



PACHERO BLVD.

ST. RT. 152