

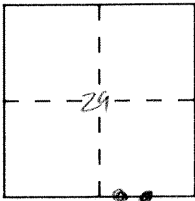
# CORNER RECORD

Document Number 3725 - 1  
3725 L 2056

City of \_\_\_\_\_

County of Merced, California

Brief Legal Description \_\_\_\_\_



### CORNER TYPE

Government Corner  Control   
 Meander  Property   
 Rancho  Other   
 Date of Survey 9-3-92

### COORDINATES (Optional)

N. \_\_\_\_\_  
 E. \_\_\_\_\_  
 Zone \_\_\_\_\_ Datum \_\_\_\_\_  
 Elev. \_\_\_\_\_

Corner — Left as found  Found and tagged  Established  Reestablished  Rebuilt

Identification and type of corner found: Evidence used to identify or procedure used to establish or reestablish the corner:

A description of the physical condition of the monument as found and as set or reset: \_\_\_\_\_

Fd. Cotton spindles

Monument well set over both locations, set 3/4" Imp. Piv. (S. 4403  
F.B. 568-41 8-24-93

### SURVEYOR'S STATEMENT

This Corner Record was prepared by me or under my direction in conformance with the Land Surveyors' Act on Sept. 7 1993.

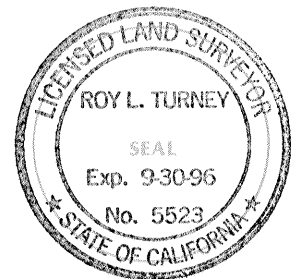
Signed [Signature] L.S. or R.C.E. Number \_\_\_\_\_



### COUNTY SURVEYOR'S STATEMENT

This Corner Record was received SEPT. 1993 and examined and filed SEPT. 16 1993.

Signed Roy L. Turney Title DEP. CO. SUR.



County Surveyor's Comment See R.S. 18 Pg. 14

SEC 29

SET NAIL & SHINER IN S. SIDE OF POWER POLE.

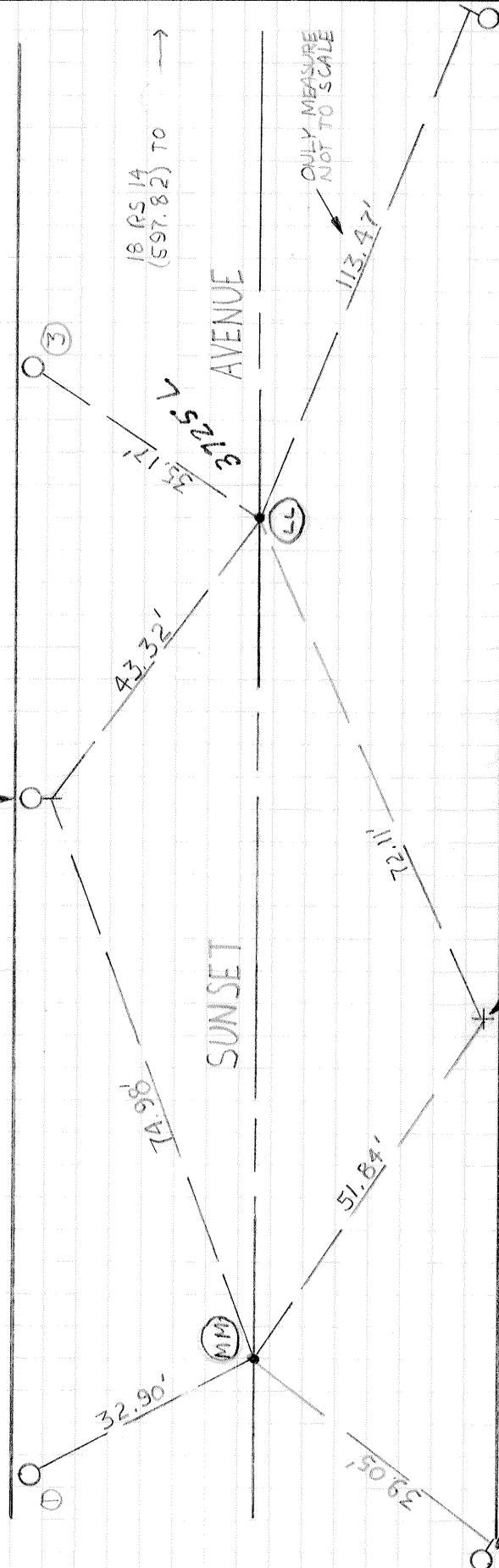
18 (RS 14 (597.82) TO

AVENUE

ONLY MEASURE NOT TO SCALE

SET NAIL & SHINER IN NE SIDE OF TELE. POLE

SEC 32



SET CHISEL "I" INTO TOP 2' CONC. BLOCK WALL (1/2 E. OF W. END) EAST SIDE OF GRAVEL DRIVE.

(MM) (LL) = COTTON SPINDLE IN LINE SEC 32 & (1) & (3) SET 3/4" IP W/BLANK TAG (YELLOW) IN POLE LINE.

POINTS WERE TIED OUT PRIOR TO PAVING EFFORT BY MERCED COUNTY DEPARTMENT OF PUBLIC WORKS