

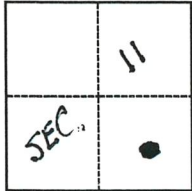
CORNER RECORD

Agency Index 3723-I
Document Number _____

City of LOS BANOS County of MERCED, California
Brief Legal Description Lot (9) on the "Map of G. Hostetler Addition No 3 Unit No1", 30 O.P. 20

CORNER TYPE

COORDINATES (Optional)



T.10 S., R.10 E.

- Government Corner
- Meander
- Rancho
- Control
- Property
- Other

Date of Survey May 8, 2018

N. _____ E. _____
 Elevation _____
 Units Metric U.S. Survey Foot
 Horizontal Datum _____
 Zone _____ Epoch Date _____
 Vertical Datum _____
 Complies with Public Resources Code §§8801-8819
 Complies with Public Resources Code §§8890-8902

- PLS Act Ref.: 8765(d) 8771 8773 Other:
- Corner/Monument: Left as found Established Rebuilt Pre-Construction
 Found and tagged Reestablished Referenced Post-Construction

Narrative of corner identified and monument as found, set, reset, replaced, or removed:
 See sheet #2 for description(s):

Recovered and accepted the 3/4" iron pipe and epoxied nail head as set at Lot Nine (9) Northeast and Southeast lot corners as shown on the "MAP OF G. HOSTETLER ADDITION No 3 UNIT No 1" recorded June 5, 1985, Vol. 30 Official Plats, page 20, #13632, Merced County Records, Merced, California

SURVEYOR'S STATEMENT

This Corner Record was prepared by me or under my direction in conformance with
 the Professional Land Surveyors' Act on May 10, 2018
 Signed John E. Coplantz P.L.S. or R.C.E. No. 3664



COUNTY SURVEYOR'S STATEMENT

This Corner Record was received MAY 18, 2018
 and examined and filed MAY 21, 2018
 Signed Zachary T. Janz P.L.S. or R.C.E. No. 8664
 Title COUNTY SURVEYOR

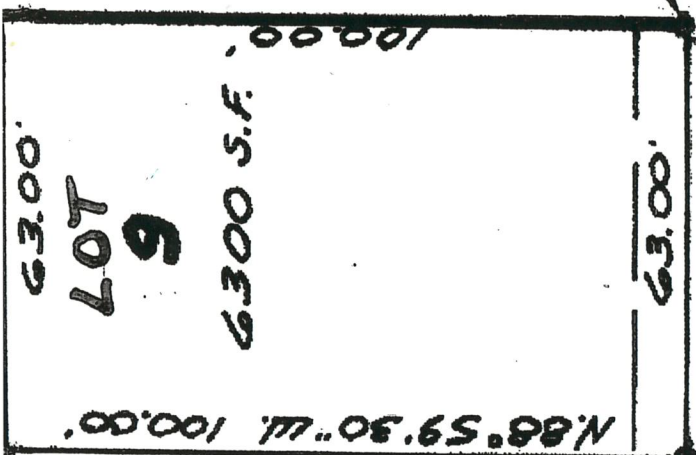


County Surveyor's Comment

SANTA

BARBARA

Found and excepted epoxied nail head on 3'x 5' PGE underground voltage box as the NE corner of lot 9



Found 3/4" iron pipe -1' below ground, tagged LS 3773 at Southeast corner Lot 9

RANCHWOOD DRIVE

N 01° 00' 30" E 829.00' Map 32894 Measured

Found 3/4" iron pipe -1' below ground, tagged LS 3773 at Monument at Ranchwood Drive & Santa Barbara

N 1° 00' 30" E 400' 348.73' Map 32894 Measured

Found 3/4" iron pipe -1' below ground, tagged LS 3773 at Monument at Ranchwood Drive & Santa Barbara Street

CITY OF LOS BANOS SUBDIVISION No 84-2

MAP OF GHOSTETLER ADDITION No 3

UNIT No 1

BEING A SUBDIVISION OF A PORTION OF THE EAST 395 FEET OF LOT 122, ACCORDING TO MAP OF MILLER & LUX'S SUBDIVISION OF LANDS AT LOS BANOS, MERCED CO., CALIF., FILED IN VOLUME 2 OF OFFICIAL PLATS AT PAGE 16, M.C.E. SECTION 11, T. 103, R. 10E., M.D.B. & M. CITY OF LOS BANOS - MERCED COUNTY - CALIF. SCALE: 1" = 20' SHEET 2 OF 2 SHEETS APRIL, 1985

VOLUME 30 PAGE 20