

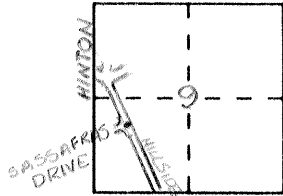
CORNER RECORD

Document Number 3718 TTT

City of DELHI

County of Merced, California

Brief Legal Description Centerline intersection of Hillside & Sassafras Drives



CORNER TYPE

Government Corner Control
 Meander Property
 Rancho Other
 Date of Survey JUNE 24, 1998

COORDINATES (Optional)

N. _____
 E. _____
 Zone _____ Datum _____
 Elev. _____

Corner — Left as found Found and tagged Established Reestablished Rebuilt

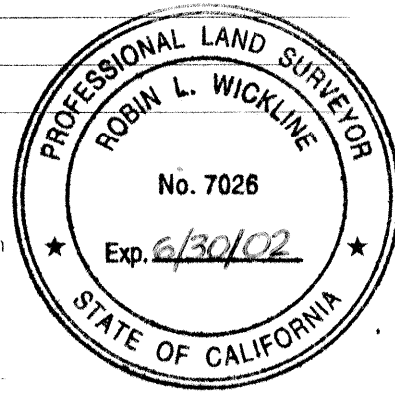
Identification and type of corner found: Evidence used to identify or procedure used to establish or reestablish the corner: Found 3/4" IP with yellow plastic plug "LS" (down 0.5') in well

A description of the physical condition of the monument as found and as set or reset: good

SURVEYOR'S STATEMENT

This Corner Record was prepared by me or under my direction in conformance with the Land Surveyors' Act on June 24 1998.

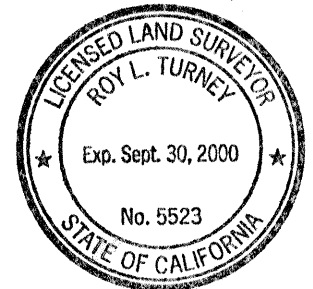
Signed Robin L. Wickline L.S. or R.C.E. Number LS 7026
 Expires 6/30/02



COUNTY SURVEYOR'S STATEMENT

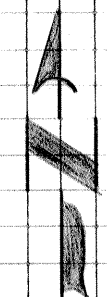
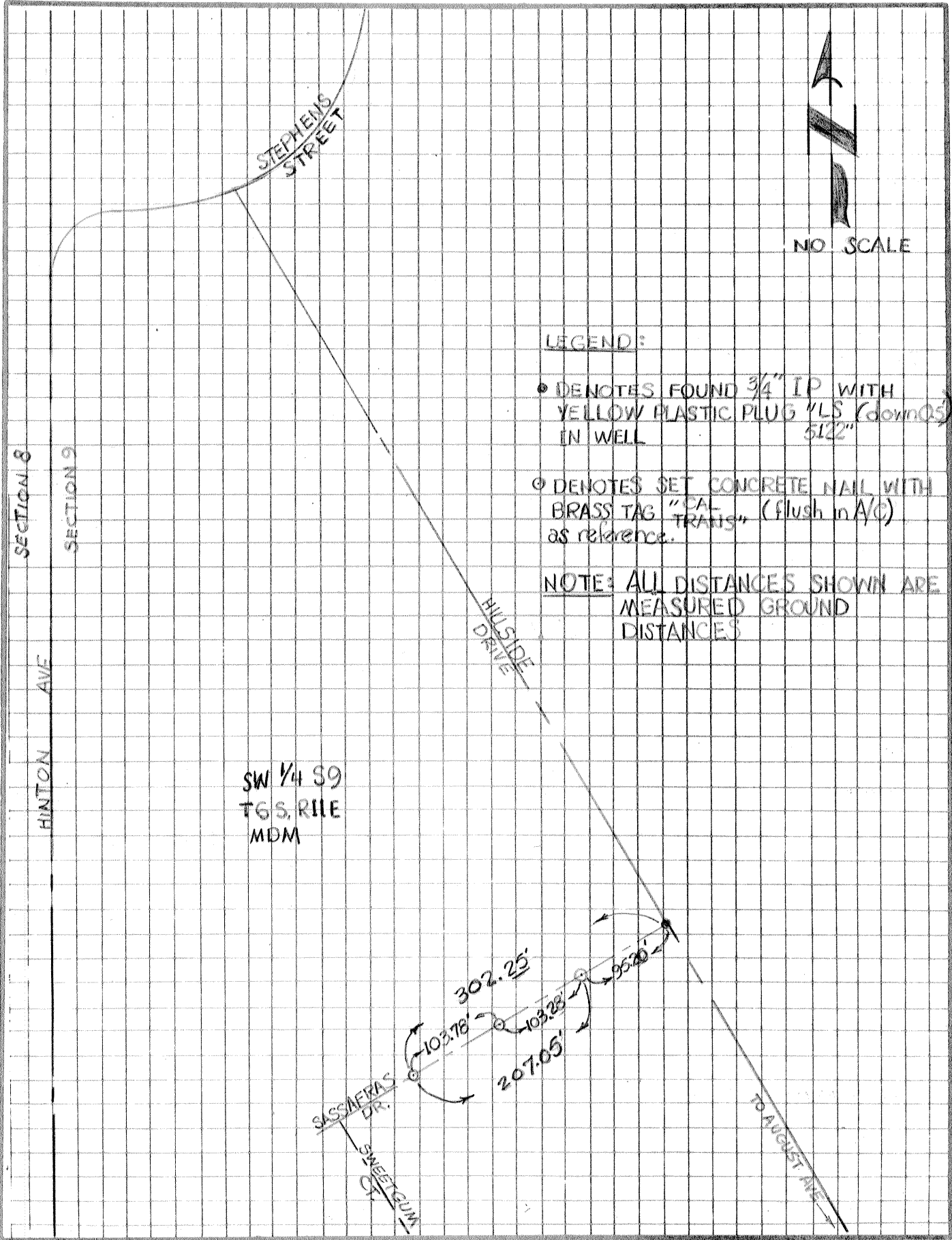
This Corner Record was received JULY 20 1998 and examined and filed JULY 27, 1998.

Signed Roy L. Turney Title DEP. CO. SUR.



County Surveyor's Comment _____

58980089



NO SCALE

LEGEND:

- DENOTES FOUND 3/4" IP WITH YELLOW PLASTIC PLUG "LS (down 05) 5122"
- ⊙ DENOTES SET CONCRETE NAIL WITH BRASS TAG "CAL TRANS" (flush in A/C) as reference.

NOTE: ALL DISTANCES SHOWN ARE MEASURED GROUND DISTANCES

SW 1/4 S9
T6S. R11E
MDM

