

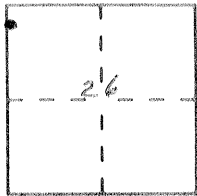
# CORNER RECORD

Document Number 3709 A

City of \_\_\_\_\_

County of MERCED California

Brief Legal Description Southwest Cor. 15 RS 49 - Mer Co. Rec in Sec. 26, T 75 R 11 E MDM



### CORNER TYPE

Government Corner  Control   
 Meander  Property   
 Rancho  Other   
 Date of Survey 2-4-92

### COORDINATES (Optional)

N. \_\_\_\_\_  
 E. \_\_\_\_\_  
 Zone \_\_\_\_\_ Datum \_\_\_\_\_  
 Elev. \_\_\_\_\_

Corner — Left as found  Found and tagged  Established  Reestablished  Rebuilt

Identification and type of corner found: Evidence used to identify or procedure used to establish or reestablish the corner: 1" L. PIPE TAGGED LS2402, DOWN 15" IN GOOD CONDITION. PER 15 RS 49, MER. CO. REC.

A description of the physical condition of the monument as found and as set or reset: DOWN IN GOOD CONDITION, DOWN 15"

### SURVEYOR'S STATEMENT

This Corner Record was prepared by me or under my direction in conformance with the Land Surveyors' Act on 2-4-92 19 \_\_\_\_.

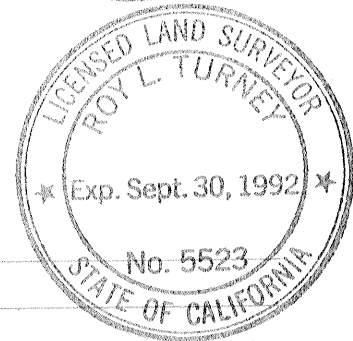
Signed Ralph Schell L.S. or R.C.E. Number 3730  
 License Expiration Date 6-30-92



### COUNTY SURVEYOR'S STATEMENT

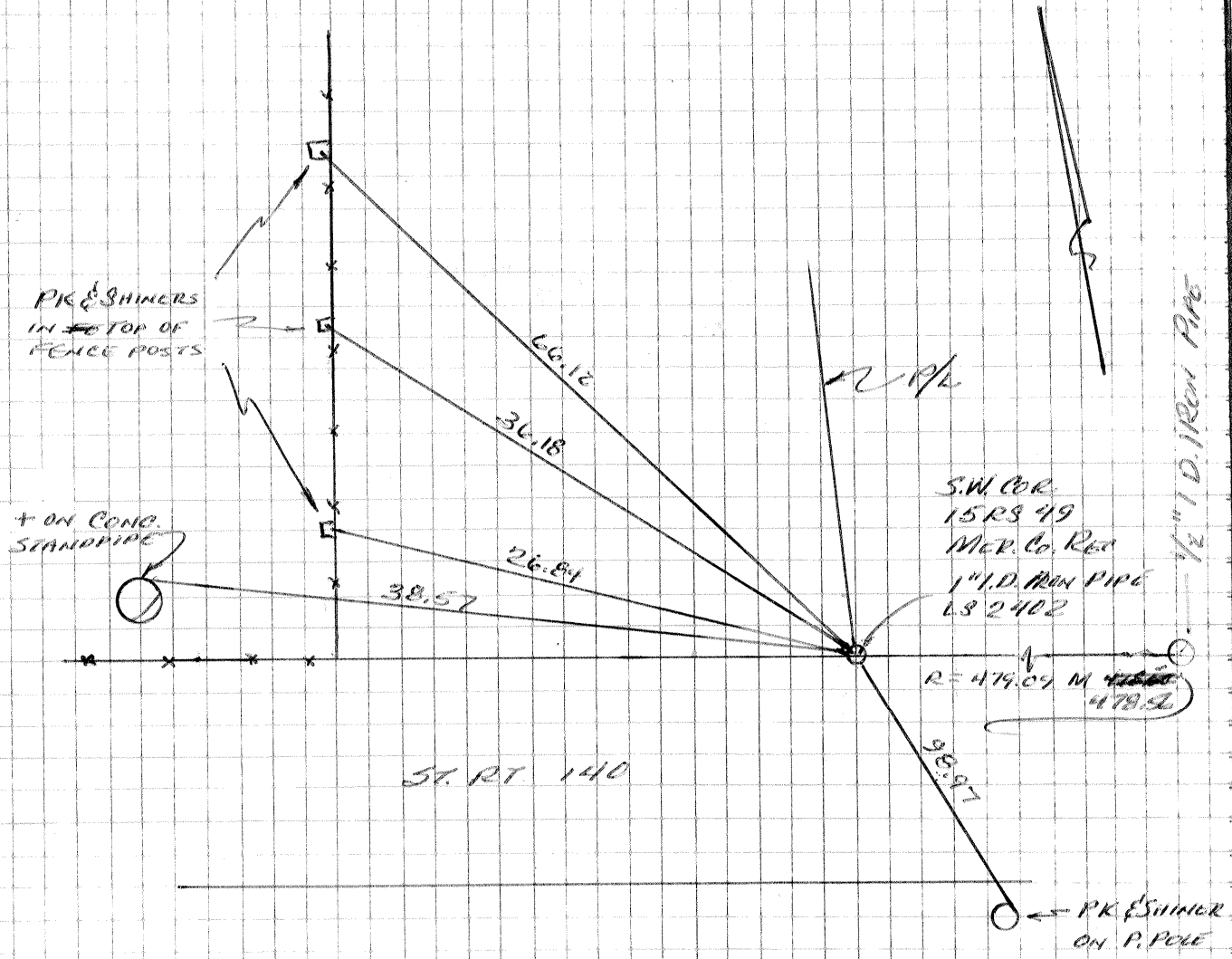
This Corner Record was received 3-13- 19 92 and examined and filed 3-20 1992.

Signed Roy L. Turney Title Dep. Co. Surveyor



County Surveyor's Comment \_\_\_\_\_

SOUTH WEST COR.  
 15-RS-49, MEK. CO. REC.  
 SECC 26, T7S R1E MDM



Sched ~~2/4/92~~