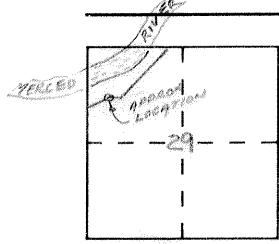


CORNER RECORD

Document Number 3678 B.

City of _____ County of MERCED, California

Brief Legal Description MEANDER CORNER, LEFT BANK MERCED RIVER, N.W. 1/4 SEC 29 6/11 M.D.B.



CORNER TYPE

- Government Corner
- Meander
- Rancho
- Date of Survey 1949
- Control
- Property
- Other

COORDINATES (Optional)

N. _____
 E. _____
 Zone _____ Datum _____
 Elev. _____

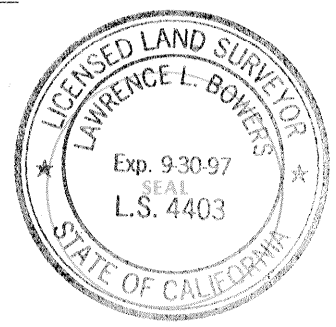
Corner — Left as found Found and tagged Established Reestablished Rebuilt

Identification and type of corner found: Evidence used to identify or procedure used to establish or reestablish the corner:
3"x4" POST AS DESCRIBED IN UNRECORDED SURVEY FOR J.A. BAILEY OF LANDS DESCRIBED IN BOOK 322 O.R. 72, NW 1/4 SEC. 29 T. 6S., R. 11 E., M.D.B., JAN. 10, 1949. (W.F. BEDESEN RECORDS & GOVT. MEANDER CORNER)

A description of the physical condition of the monument as found and as set or reset: 3"x4" POST DETERIORATED SET 3/4" IRON PIPE, LS 4403, IN REMAINS OF POST

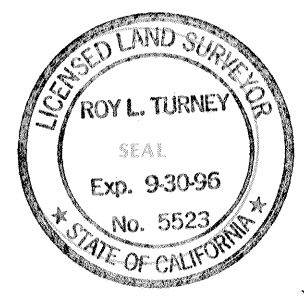
SURVEYOR'S STATEMENT

This Corner Record was prepared by me or under my direction in conformance with the Land Surveyors' Act on January 11 1994.
 Signed [Signature] L.S. or ~~REG.~~ Number 4403

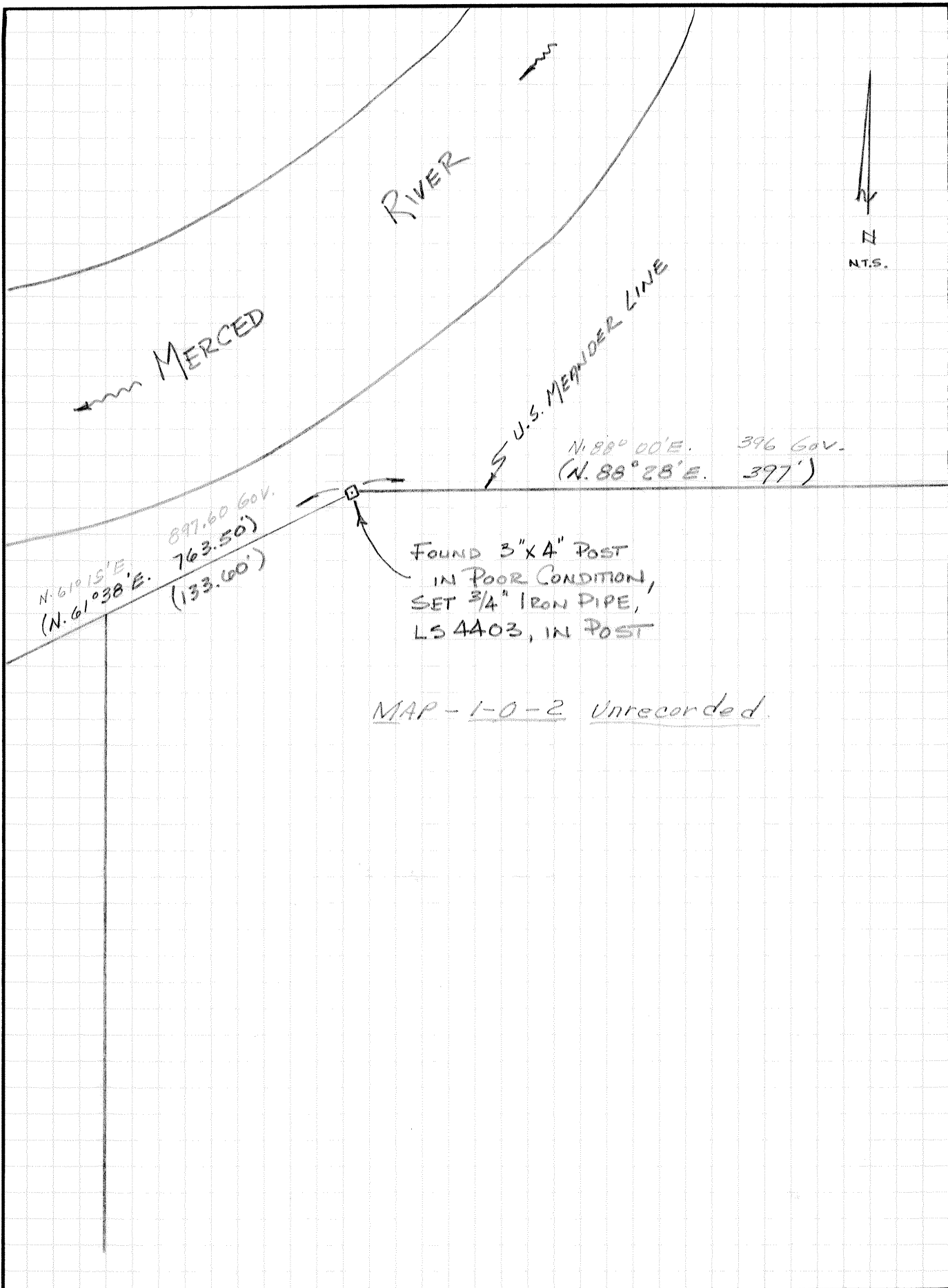


COUNTY SURVEYOR'S STATEMENT

This Corner Record was received _____ 19 ____ and examined and filed 6-10 - 1994.
 Signed [Signature] Title DEP CO. SUR.



County Surveyor's Comment See Map 1-0-2 See COR. 3678-B.



MAP - 1-0-2 Unrecorded.