

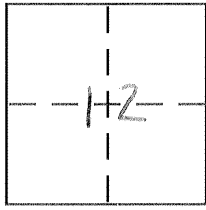
CORNER RECORD

Document Number 3672-B, F, I, K

City of _____

County of MERCED, California

Brief Legal Description LOT 9 & 10 - MERCED COLONY NUMBER III S.O.P. 13



CORNER TYPE

Government Corner Control
Meander Property
Rancho Other
Date of Survey 12-4-06

COORDINATES (Optional)

N. _____
E. _____
Zone _____ NAD27 NAD83
NAD83 Epoch _____
Elev. _____
Vert. Datum: NGVD29 NAVD88
Meas. Units: Metric Imperial

Corner -- Left as found Found and tagged Established Reestablished Rebuilt

Identification and type of corner found: Evidence used to identify or procedure used to establish or reestablish the corner:

SEE SKETCH

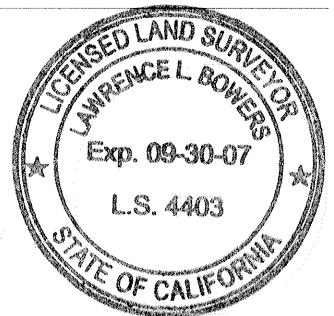
A description of the physical condition of the monument as found and as set or reset:

SEE SKETCH

SURVEYOR'S STATEMENT

This Corner Record was prepared by me or under my direction in conformance with the Land Surveyor's Act on 2-2-07

Signed [Signature] P.L.S or R.C.E. No. _____



COUNTY SURVEYOR'S STATEMENT

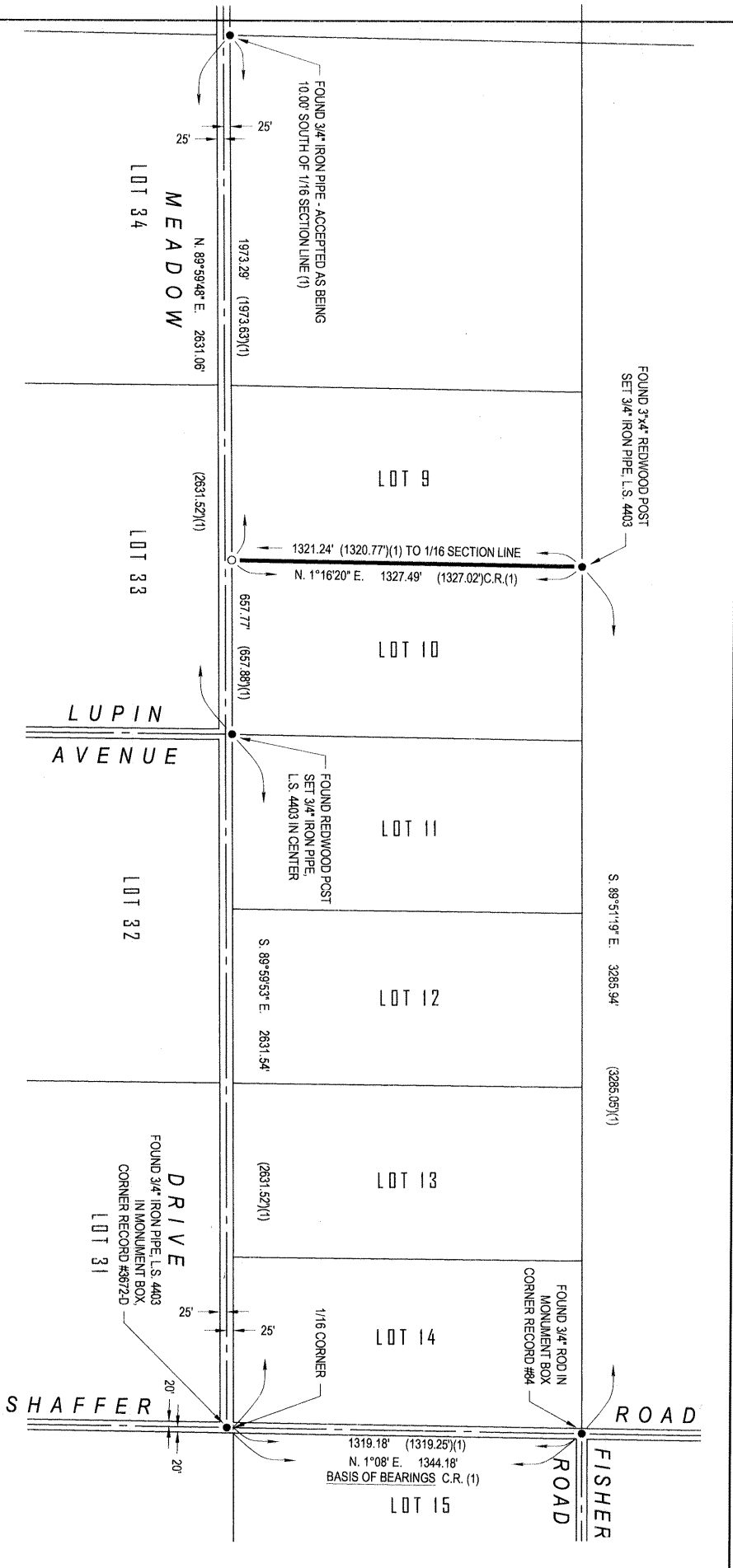
This Corner Record was received Feb. 2, 2007

and examined and filed Feb. 2, 2007

Signed [Signature] P.L.S or R.C.E. No. 4895
Title Dep. County Surveyor



County Surveyor's Comment _____



LEGEND

- Found and accepted monument as indicated
- Set 3/4" iron pipe, L.S. 4403

NOTE

Map (1) North and South distances are to the 1/16th Section Line on Lots 9 thru 14. Original stakes (3"x4" redwood posts) were set on the north line of the 50 foot road.

REFERENCE:

(1) Map of Merced Colony Number III, 5 O.P. 13, M.C.R.

BASIS OF BEARINGS

N. 01°08' E. for the centerline of Shaffer Road was calculated from the west line of Section 18 according to the Map of Merced Colony Number III, Volume 5, Official Plats, Page 13, Merced County Records.

