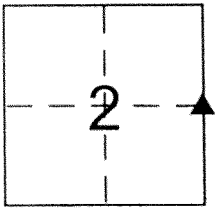


CORNER RECORD

Document Number 3666

City of \_\_\_\_\_ County of Merced, California

Brief Legal Description E. 1/4 Corner, Sec. 2, T. 7 S, R. 10 E., M. D. B. & M.



CORNER TYPE

Government Corner  Control   
Meander  Property   
Rancho  Other   
Date of Survey 01-24-2013

COORDINATES (Optional)

N. \_\_\_\_\_  
E. \_\_\_\_\_  
Zone \_\_\_\_\_ NAD27  NAD83   
NAD83 Epoch \_\_\_\_\_  
Elev. \_\_\_\_\_  
Vert. Datum: NGVD29  NAVD88   
Meas. Units: Metric  Imperial

Corner - Left as found  Found and tagged  Established  Reestablished  Rebuilt

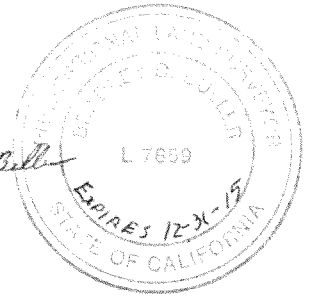
Identification and type of corner found: Evidence used to identify or procedure used to establish or reestablish the corner:  
Found 3/8" iron rod 0.3' down in dirt below asphalt surface of Van Clief Rd. per R.S. vol. 9 page 1, 1967. The following reference monuments were found; a 1 1/8" steel shaft West of the monument and a 2" Iron Pipe East of monument per R.S. vol.9 page 1, 1967.

A description of the physical condition of the monument as found and as set or reset: Monument was found in good condition. Top was corroding. Reference monuments found in good condition except that the 2" Iron pipe has a slightly mashed top.

SURVEYOR'S STATEMENT

This Corner Record was prepared by me or under my direction in conformance with the Land Surveyor's Act on MARCH 20 2013 *David Bull*

Signed David F. Bull P.L.S or R.C.E. No. L7659



COUNTY SURVEYOR'S STATEMENT

This Corner Record was received March 21, 2013

and examined and filed April 26, 2013

Signed *J. Steven Reichmuth* P.L.S or ~~R.C.E.~~ No. 4895

Title Acting County Surveyor

County Surveyor's Comment \_\_\_\_\_





NTS

