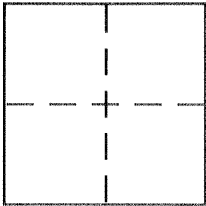


**CORNER RECORD**

Document Number 3661 G

City of \_\_\_\_\_ County of Merced, California

Brief Legal Description Lots 1 & 2 as shown on Stevinson Colony Subd. No 10, Vol 3 Maps Pg 42 Merced County Records



**CORNER TYPE**

Government Corner  Control   
Meander  Property   
Rancho  Other   
Date of Survey July 2001

**COORDINATES (Optional)**

N. \_\_\_\_\_  
E. \_\_\_\_\_  
Zone \_\_\_\_\_ NAD27  NAD83   
NAD83 Epoch \_\_\_\_\_  
Elev. \_\_\_\_\_  
Vert. Datum: NGVD29  NAVD88   
Meas. Units: Metric  Imperial

Corner - Left as found  Found and tagged  Established  Reestablished  Rebuilt

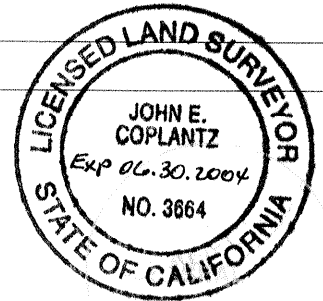
Identification and type of corner found: Evidence used to identify or procedure used to establish or reestablish the corner:  
Vol 3 Maps Pg. 42, Vol. 23 RS Pg 8, Vol. 36 RS Pg 1, Merced County Records.

A description of the physical condition of the monument as found and as set or reset:  
over for sketch

**SURVEYOR'S STATEMENT**

This Corner Record was prepared by me or under my direction in conformance with the Land Surveyor's Act on July 2001

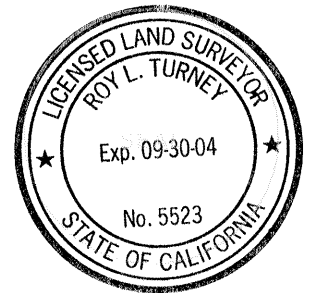
Signed John E. Coplantz P.L.S or R.C.E. No. 3664



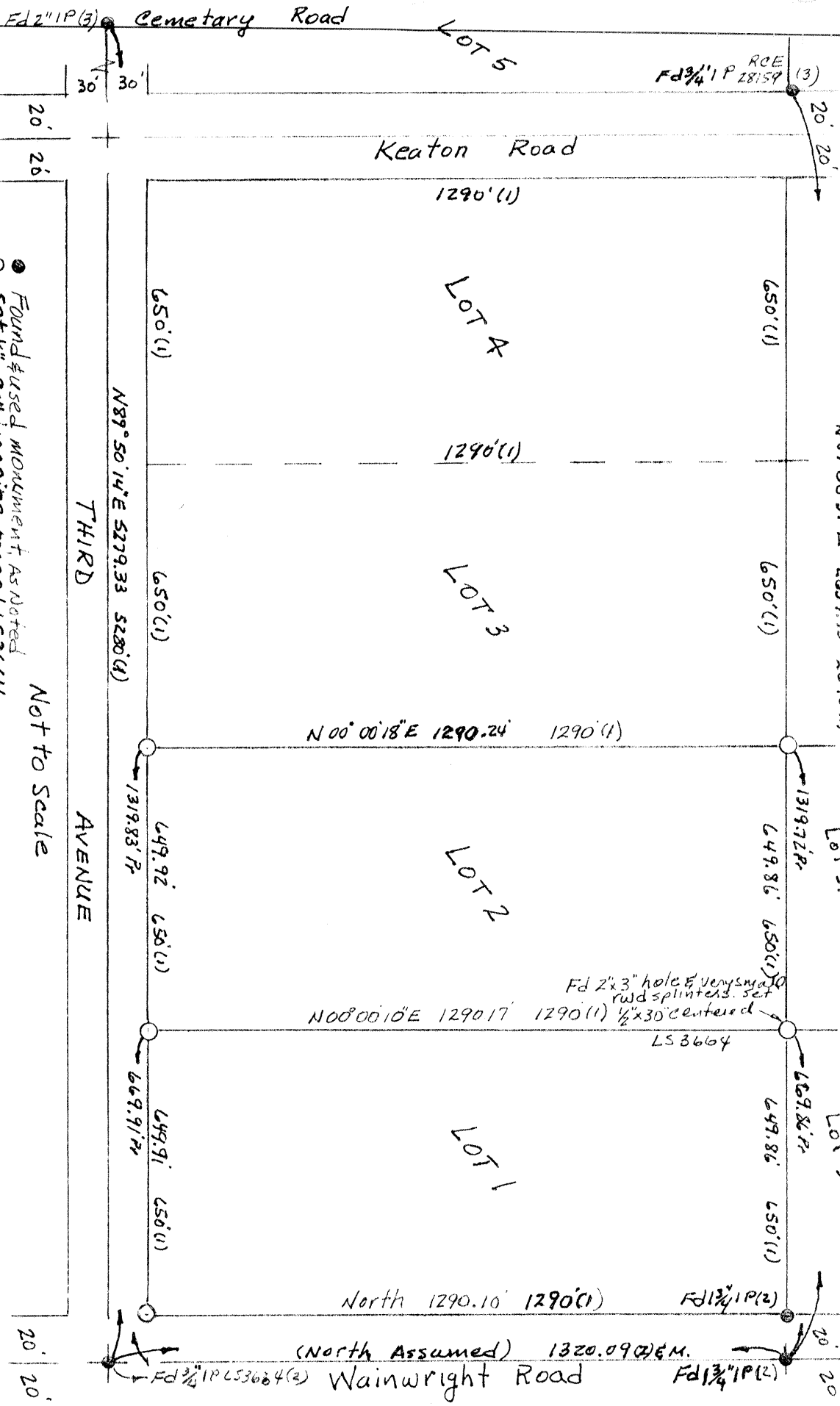
**COUNTY SURVEYOR'S STATEMENT**

This Corner Record was received 7-19-01 and examined and filed \_\_\_\_\_

Signed Roy L. Turney P.L.S or R.C.E. No. 5523  
Title DEPUTY CO. SURVEYOR



County Surveyor's Comment \_\_\_\_\_



● FOUND & USED MONUMENT AS NOTED  
 ○ SET 1/2" x 30" IRON PIPE, TAGGED LS3664

NOT TO SCALE

Survey for owner Vincent Roman in July 2001  
 Lots 1 & 2 AS SHOWN ON STEVENSON COLONY SUBDIVISION  
 NO 10, RECORDED IN VOL 3 OF MAPS, PAGE 42, MERCER COUNTY RECORDS.  
 BY JOHN E. COPLAND, CALIFORNIA LICENSED SURVEYOR NO 3664

Pr = Prepared

- References
- (1) STEVENSON COLONY SUB 10, VOL 3 MAPS PAGE 42, MERCER CO. REC
  - (2) VOL 23 RECORD SURVEY PG 5, MERCER CO. RECORDS
  - (3) VOL 32 RECORD SURVEY PG 1, MERCER CO. RECORDS