

No 3651

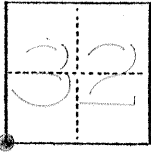
(For Copy Use Only)

CORNER RECORD

COUNTY OF MERCED T. 9 S 10 S R. 10 E M.D.B.S. MERIDIAN CALIFORNIA

CORNER TYPE: GOV'T. CORNER MEANDER RANCHO CONTROL OTHER

CORNER IDENTIFICATION — DATE OF VISIT NOV. 18 1975



*SOUTH WEST CORNER OF SECTION 32
T9S, R10E - SECTION CORNER*

CORNER — LEFT AS FOUND FOUND AND TAGGED REESTABLISHED OBLITERATED CORNER REBUILT

PHYSICAL DESCRIPTION OF CORNER FOUND; EVIDENCE AND METHOD USED TO IDENTIFY OR REESTABLISH

*FD 1" IRON PIPE 2' DOWN, USED SWING TIES IN BK 51
PB 37 MERCED COUNTY PUBLIC WORKS DEPT.*

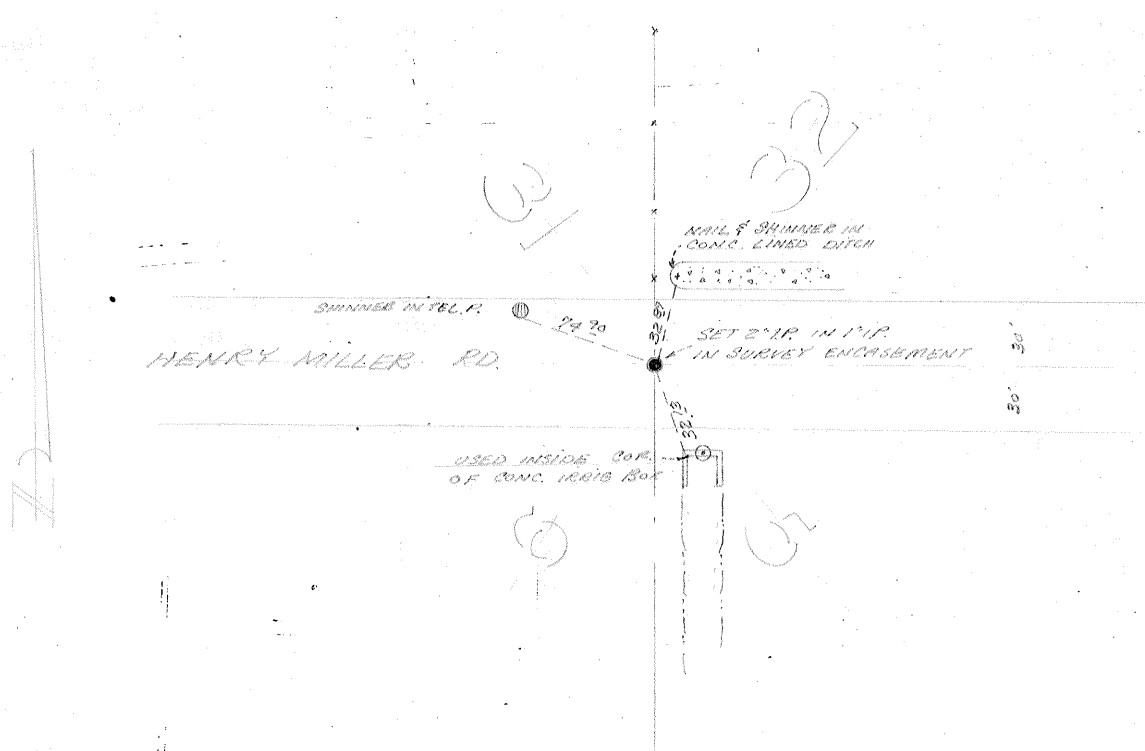
PHYSICAL DESCRIPTION OF MONUMENTS REBUILT OR PERPETUATED

*DROVE 2" IRON PIPE WITH TAG R.C.E. 13760 IN
SURVEY ENCASUREMENT*

CALIFORNIA COORDINATE SYSTEM ORDER: FIRST SECOND THIRD
STATIONS USED: NGS (USC & GS) STATE COUNTY OTHER STATION _____ STATION _____
ZONE _____ ELEVATION _____ NORTHINGS (Y) _____ EASTINGS (X) _____

(Fold)

SKETCH: (Include reference tie or witness points, remarks and topo of area)



SURVEYOR'S CERTIFICATE

THIS CORNER RECORD WAS PREPARED BY ME OR UNDER MY DIRECTION IN CONFORMANCE WITH THE LAND SURVEYORS ACT ON _____ 19____

SIGNED: _____

L.S. or R.C.E. No.: _____

SEAL

COUNTY SURVEYOR'S CERTIFICATE

THE CORNER RECORD WAS RECEIVED _____ 19____ AND EXAMINED AND FILED _____ 19____

BY: _____

TITLE: _____

DOCUMENT No. 3651

STATEMENT ON BACK OF SHEET

YES NO