

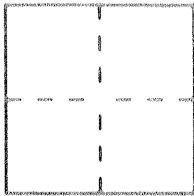
CORNER RECORD

Document Number 3650YY

City of Los Banos

County of Merced, California

Brief Legal Description LOT CORNER



in Sect 15, T10S R10E MDM
CORNER TYPE

Government Corner Control
 Meander Property
 Rancho Other
 Date of Survey 3-22-93

COORDINATES

(Optional)

N. 203022.5
 E. 1895143.5
 Zone 3 Datum 27
 Elev. _____

Corner — Left as found Found and tagged Established Reestablished Rebuilt

Identification and type of corner found: Evidence used to identify or procedure used to establish or reestablish the corner: 1" Iron pipe Dn. 0.7 per 12 OP 45 Mer. Co. Records

A description of the physical condition of the monument as found and as set or reset: monument in good condition, pipe not firmly set, 0.7 below A.C. surface

SURVEYOR'S STATEMENT

This Corner Record was prepared by me or under my direction in conformance with the Land Surveyors' Act on 3-22 19 93.

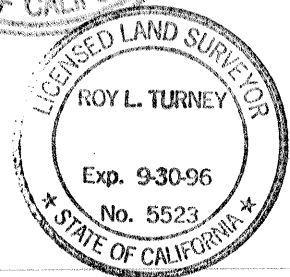
Signed Raph Schut L.S. or ~~XXX~~ Number 3730
PARTY CHIEF, CALTRANS License Expiration Date _____



COUNTY SURVEYOR'S STATEMENT

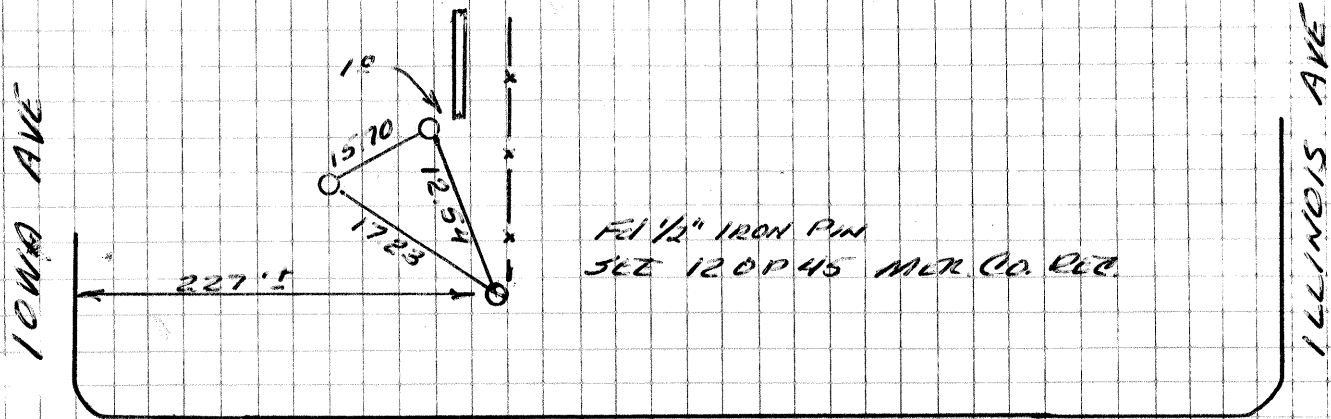
This Corner Record was received 2-23 19 94 and examined and filed 2-25 19 94.

Signed Roy Turney Title DEP. CO. SUR.



County Surveyor's Comment _____

SECT 15 T105 R10E MDM



F&I 1/2" IRON PIN
SET 12 DP 45 MCR. CO. REC.

PACHECO BLVD.
ST. RT. 132



The ties shown hereon are for the purpose of perpetuating the monumentation currently on file. No attempt was made to determine the validity of the monuments or their proper location in relation to legal boundary lines in the area.